

CHERRY POINT, NORTH CAROLINA

COPTER TACAN RWY 23R

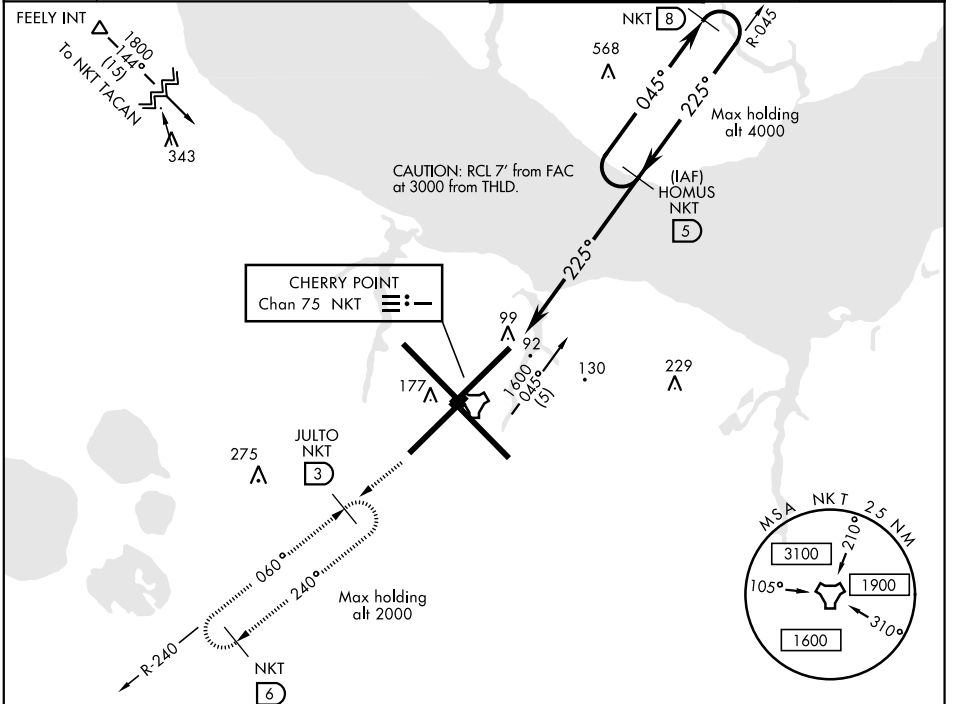
TACAN NKT Chan 75	APCH CRS 225°	Rwy ldg 7553 TDZE 23 Arprt Elev 29	AL-471 [USN]	CHERRY POINT MCAS (CUNNINGHAM FLD)	(KNKT)
----------------------	------------------	---	--------------	------------------------------------	--------

▼ * When ALS inop, increase vis to 1 mile.
Max Airspeed 90 KIAS



MISSED APPROACH: Climb to 1600 direct NKT TACAN, then via NKT R-240 to JULTO and hold.

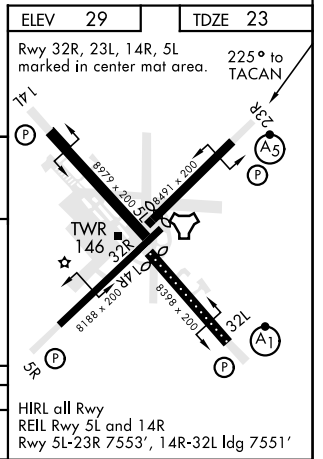
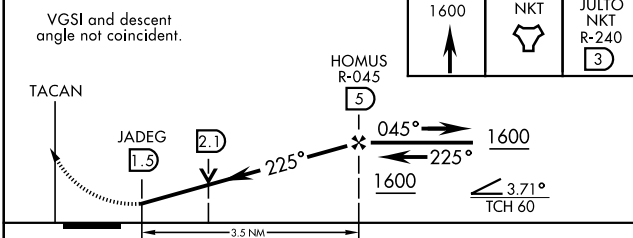
ATIS 127.475 244.875	CHERRY POINT APP CON (E) 124.1 268.7 (abv 2600') (E) 132.575 299.6 (at/blw 2600') (W) 119.35 377.175 (N) 119.75 360.775	CHERRY POINT TOWER 121.3 340.2	GND CON 128.625 239.025	CLNC DEL 125.95 316.125	ASR/ PAR
----------------------------	--	-----------------------------------	-------------------------------	-------------------------------	-------------



ELEV 29	TDZE 23
---------	---------

Rwy 32R, 23L, 14R, 5L marked in center mat area. 225° to TACAN

EMERG SAFE ALT 100 NM 4100



CATEGORY	COPTER		
S-23R *	400-1/2	377	(400-1/2)

HIRL all Rwy
REIL Rwy 5L and 14R
Rwy 5L-23R 7553', 14R-32L ldg 7551'

CHERRY POINT, NORTH CAROLINA 34°54'N-76°53'W CHERRY POINT MCAS (CUNNINGHAM FLD) (KNKT)

Amtd 5 09NOV17

COPTER TACAN RWY 23R