

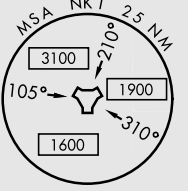
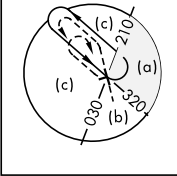
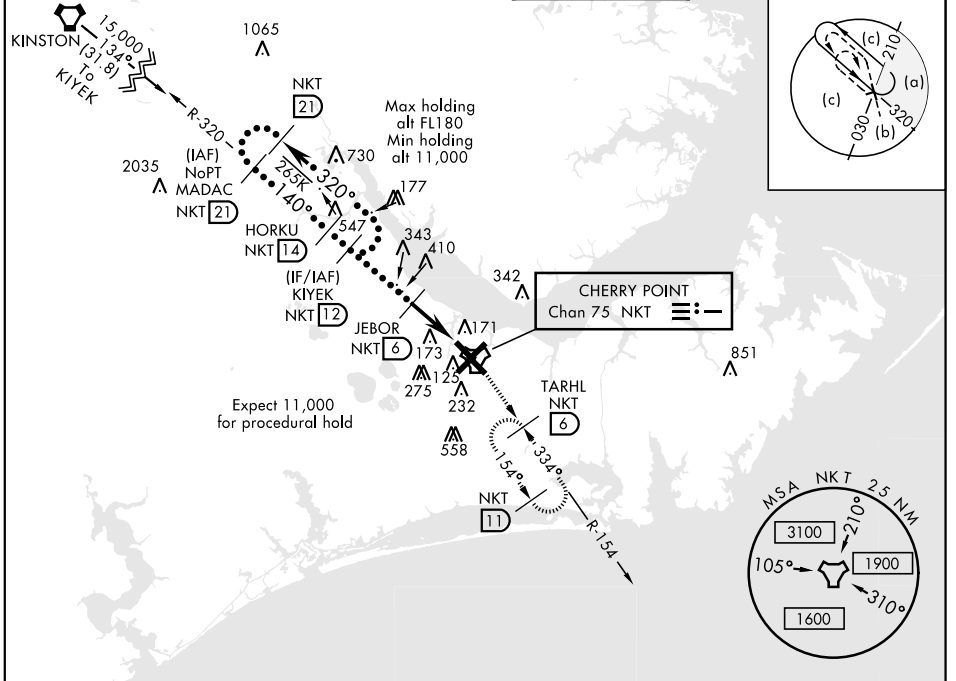
CHERRY POINT, NORTH CAROLINA

# HI-TACAN RWY 14L

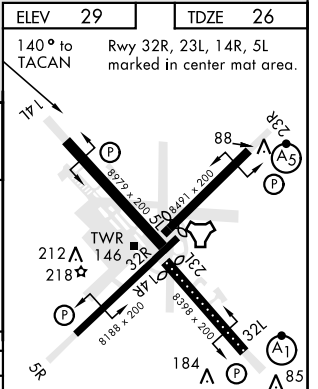
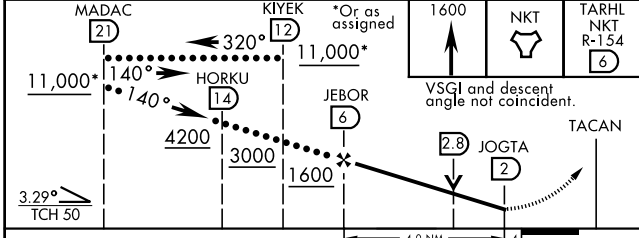
TACAN NKT Chan 75	APCH CRS 140°	Rwy Idg 8979	TDZE 26	Arprt Elev 29	JAL-471 [USN] CHERRY POINT MCAS (CUNNINGHAM FLD) (KNKT)
----------------------	------------------	-----------------	------------	------------------	---

MISSED APPROACH: Climb to 1600 to NKT TACAN then intercept NKT R-154 to TARHL and hold.

ATIS 127.475 244.875	CHERRY POINT APP CON (E) 124.1 268.7 (abv 2600') (E) 132.575 299.6 (at/blw 2600') (W) 119.35 377.175 (N) 119.75 360.775	CHERRY POINT TOWER 121.3 340.2	GND CON 128.625 239.025	CLNC DEL 125.95 316.125	ASR/ PAR
----------------------------	--	-----------------------------------	-------------------------------	-------------------------------	-------------



EMERG SAFE ALT 100 NM 4100	ELEV 29	TDZE 26
----------------------------	---------	---------



CATEGORY	C	D	E
S-14L	460-1¼	434	(500-1¼)
CIRCLING	600-1½ 571 (600-1½)	600-2 571 (600-2)	700-2½ 671 (700-2½)

HIRL all Rwy  
REIL Rwy 5L and 14R  
Rwy 5L-23R Idg 7553',  
14R-32L Idg 7551'

# HI-TACAN RWY 14L