

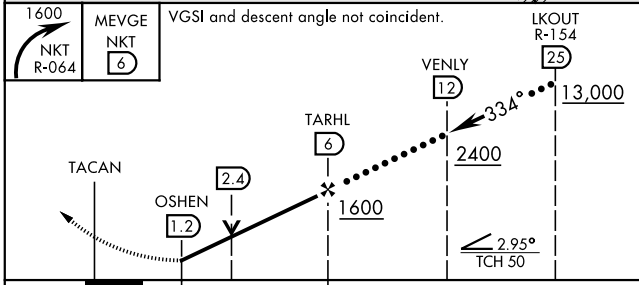
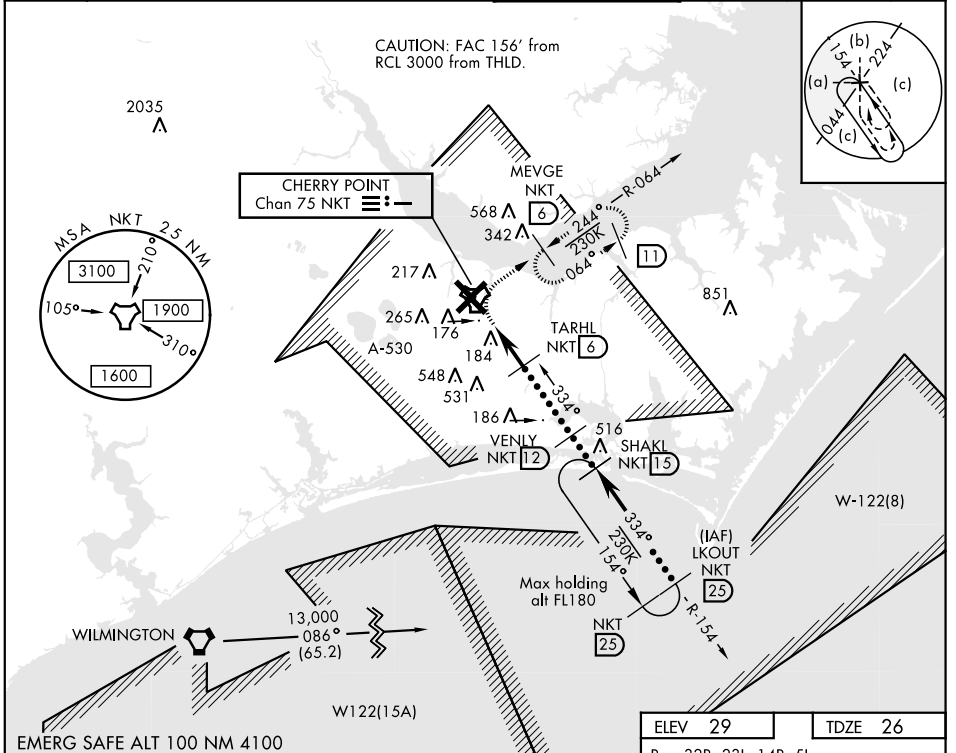
CHERRY POINT, NORTH CAROLINA

HI-TACAN Y RWY 32L

TACAN NKT Chan 75	APCH CRS 334°	Rwy ldg TDZE Arpt Elev 7551 26 29	JAL-471 [USN]	CHERRY POINT MCAS (CUNNINGHAM FLD) (KNKT)
-----------------------------	-------------------------	---	---------------	---

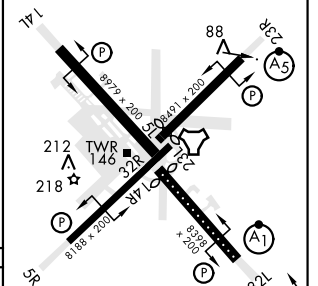
▼ * When ALS inop, increase CAT CDE vis to 1 1/2 miles. ALSF-1
A1 MISSED APPROACH: Climbing right turn to 1600 direct MEVGE and hold.

ATIS 127.475 244.875	CHERRY POINT APP CON (E) 124.1 268.7 (abv 2600') (E) 132.575 299.6 (at/blw 2600') (W) 119.35 377.175 (N) 119.75 360.775	CHERRY POINT TOWER 121.3 340.2	GND CON 128.625 239.025	CLNC DEL 125.95 316.125	ASR/ PAR
--	---	--	---	---	-------------



ELEV 29	TDZE 26
---------	---------

Rwy 32R, 23L, 14R, 5L marked in center mat area.



CATEGORY	C	D	E
S-32L*	480-7/8	454 (500-7/8)	
CIRCLING**	600-1 1/2 571 (600-1 1/2)	600-2 571 (600-2)	700-2 1/2 671 (700-2 1/2)

HIRL all Rwy
REIL Rwy 5L and 14R
Rwy 5L-23R ldg 7553',
14R-32L ldg 7551'

CHERRY POINT, NORTH CAROLINA 34° 54' N-76° 53' W CHERRY POINT MCAS (CUNNINGHAM FLD) (KNKT)

Amtd 3 09NOV17

HI-TACAN Y RWY 32L