

CHERRY POINT, NORTH CAROLINA

HI-TACAN Z RWY 32L

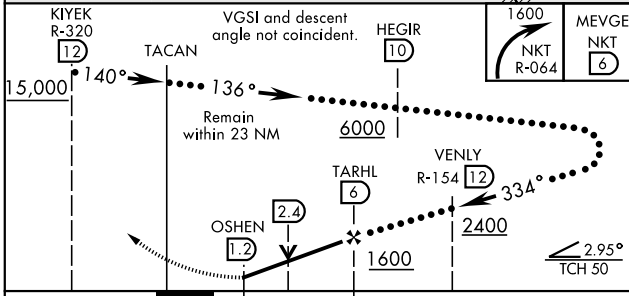
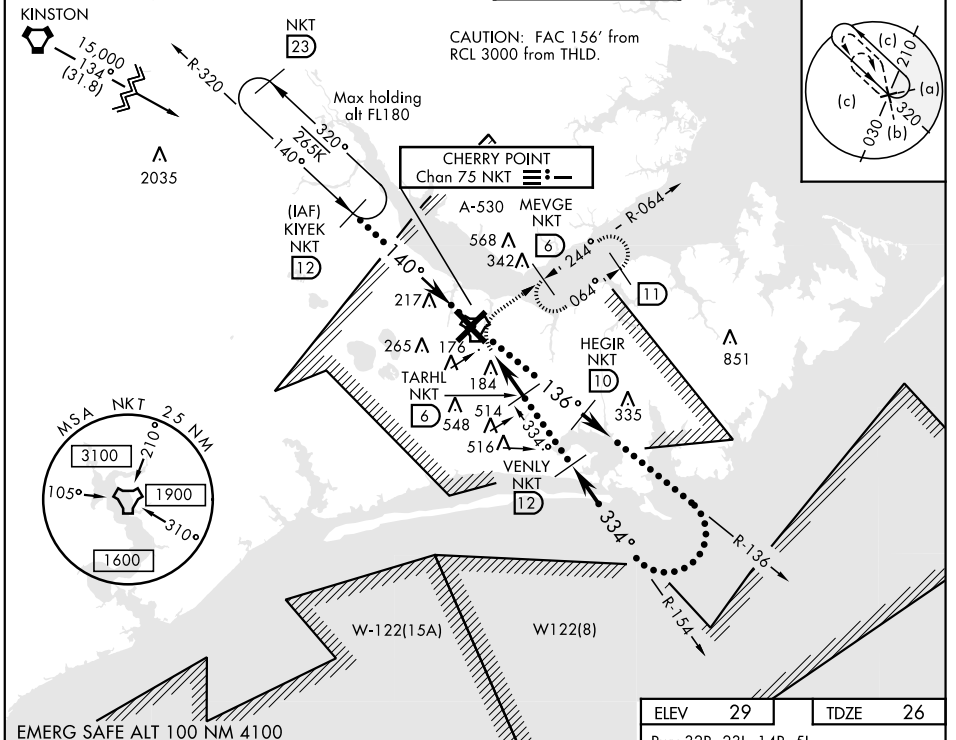
TACAN NKT Chan 75	APCH CRS 334°	Rwy ldg TDZE Arprt Elev 7551 26 29	JAL-471 [USN]	CHERRY POINT MCAS (CUNNINGHAM FLD) (KNKT)
-----------------------------	-------------------------	--	---------------	---

▼ * When ALS inop, increase vis CAT CDE to 1 1/2 miles.
 ** Circling to land Rwy 5L NA at night.



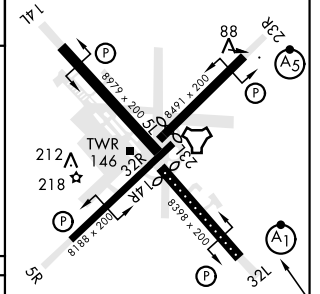
CHERRY POINT TOWER	GND CON	CLNC DEL	ASR/PAR
121.3 340.2	128.625 239.025	125.95 316.125	

ATIS	CHERRY POINT APP CON		
127.475	(E) 124.1	268.7	(abv 2600')
244.875	(E) 132.575	299.6	(at/blw 2600')
	(W) 119.35	377.175	(N) 119.75 360.775



ELEV	29	TDZE	26
------	----	------	----

Rwy 32R, 23L, 14R, 5L marked in center mat area.



CATEGORY	C		D		E
S-32L *	480-7/8		454	(500-7/8)	
** CIRCLING	600-1 1/2 571 (600-1 1/2)	600-2 571 (600-2)	700-2 1/2 671 (700-2 1/2)		

HIRL all Rwy
 REIL Rwy 5L and 14R
 Rwy 5L-23R ldg 7553',
 14R-32L ldg 7551'

CHERRY POINT, NORTH CAROLINA 34° 54' N-76° 53' W CHERRY POINT MCAS (CUNNINGHAM FLD) (KNKT)

Amdt 5 09NOV17

HI-TACAN Z RWY 32L