

CHERRY POINT, NORTH CAROLINA

# ILS or LOC/DME RWY 23R

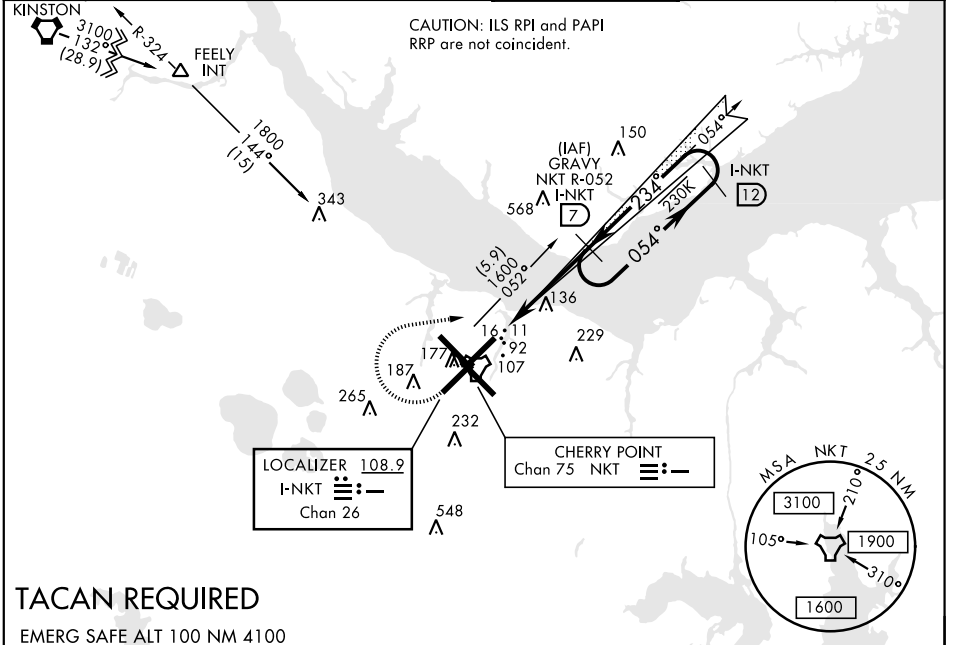
LOC/DME I-NKT <b>108.9</b> Chan <b>26</b>	APCH CRS <b>234°</b>	Rwy ldg <b>7553</b> TDZE <b>23</b> Arprt Elev <b>29</b>	AL-471 [USN]	CHERRY POINT MCAS (CUNNINGHAM FLD) (KNKT)
---	-------------------------	---	--------------	---

▼ \* When ALS inop, increase CAT ABCD vis to ¾ mile.  
 \*\* When ALS inop, increase CAT ABCD vis to 1 mile.
 

 MALSR 

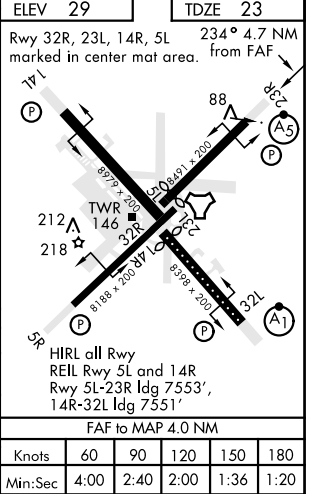
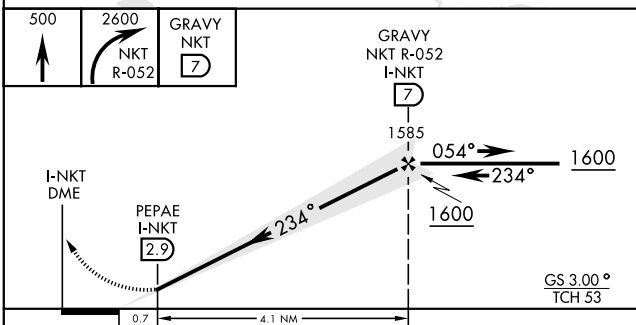
 MISSED APPROACH: Climb to 500, then climbing right turn to 2600 via NKT TACAN R-052 to GRAYV and hold.

ATIS <b>127.475</b> <b>244.875</b>	CHERRY POINT APP CON (E) <b>124.1 268.7</b> (abv 2600') (W) <b>119.35 377.175</b> (N) <b>119.75 360.775</b>	CHERRY POINT TOWER <b>121.3 340.2</b>	GND CON <b>128.625</b> <b>239.025</b>	CLNC DEL <b>125.95</b> <b>316.125</b>	ASR/PAR
--	---	--	---	---	---------



## TACAN REQUIRED

EMERG SAFE ALT 100 NM 4100



CHERRY POINT, NORTH CAROLINA 34° 54' N-76° 53' W CHERRY POINT MCAS (CUNNINGHAM FLD) (KNKT)

Amtd 3 09NOV17

# ILS or LOC/DME RWY 23R