

CHERRY POINT, NORTH CAROLINA

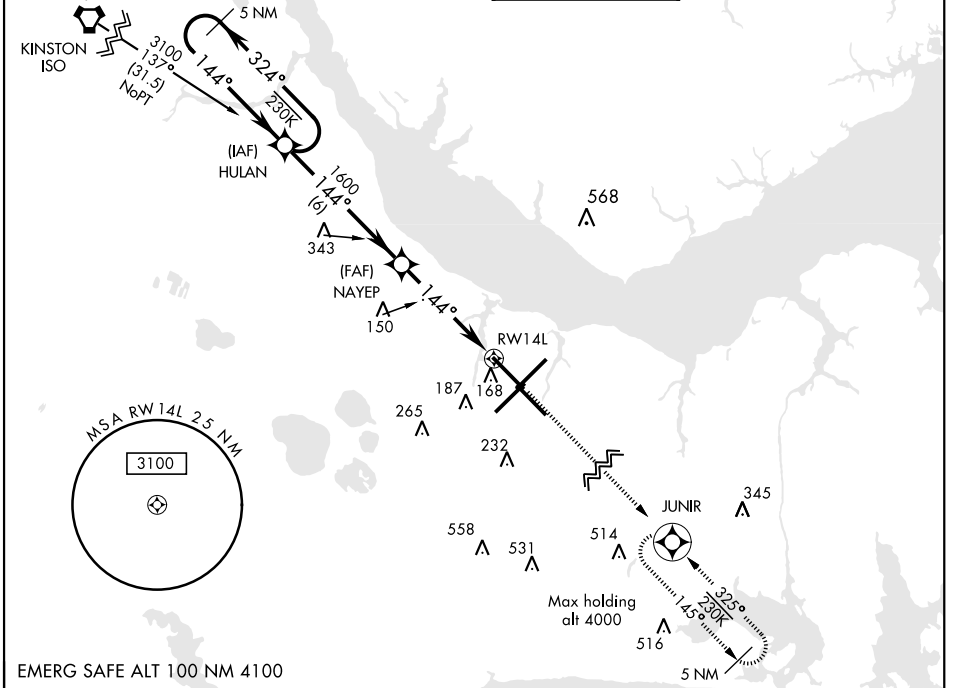
RNAV (GPS) RWY 14L

WAAS Chan 41117 W14A	APCH CRS 144°	Rwy Idg TDZE Arprt Elev 8979 26 29
--	-------------------------	--

AL-471 [USN] CHERRY POINT MCAS (CUNNINGHAM FLD) (KNKT)

<p>▼ For uncompensated Baro-VNAV systems, LNAV/VNAV NA below -15°C (5°F) or above 53°C (128°F). DME/DME RNP-0.3 NA.</p>	<p>MISSED APPROACH: Climb to 3100 direct JUNIR and hold.</p>
--	--

<p>ATIS 127.475 244.875</p>	<p>CHERRY POINT APP CON (E) 124.1 268.7 (abv 2600') (E) 132.575 299.6 (at/blw 2600') (W) 119.35 377.175 (N) 119.75 360.775</p>	<p>CHERRY POINT TOWER 121.3 340.2</p>	<p>GND CON 128.625 239.025</p>	<p>CLNC DEL 125.95 316.125</p>	<p>ASR/ PAR</p>
---	--	--	--	--	---------------------



EMERG SAFE ALT 100 NM 4100

<p>VGSI and RNAV glidepath not coincident</p>					<p>3100</p>	<p>JUNIR</p>	<p>ELEV 29</p>	<p>TDZE 26</p>
<p>HULAN</p> <p>324°</p> <p>144°</p> <p>3100</p> <p>GP 3.04° TCH 55</p>					<p>† LNAV only</p>		<p>144° to RWY 14L</p> <p>Rwy 32R, 23L, 14R, 5L marked in center mat area.</p>	
<p>NAYEP</p> <p>144°</p> <p>1600</p> <p>† 1.1 NM to RWY 14L</p> <p>RWY 14L</p> <p>4.7 NM</p>								
CATEGORY	A	B	C	D				
LPV DA	226-3/4		200	(200-3/4)				
LNAV/VNAV DA	300-7/8 274 (300-7/8)	311-7/8 285 (300-7/8)	319-7/8 293 (300-7/8)	330-1 304 (400-1)				
LNAV MDA	440-1	414 (500-1)	440-1 1/8	414 (500-1 1/8)				
CIRCLING	540-1	511 (600-1)	600-1 1/2 571 (600-1 1/2)	600-2 571 (600-2)				
<p>HIRL all Rwy REIL Rwy 5L and 14R Rwy 5L-23R Idg 7553' Rwy 14R-32L Idg 7551'</p>								

CHERRY POINT, NORTH CAROLINA

34° 54'N-76° 53'W

CHERRY POINT MCAS (CUNNINGHAM FLD) (KNKT)

Amdt 2 09NOV17

RNAV (GPS) RWY 14L