

# RNAV (GPS) RWY 23R

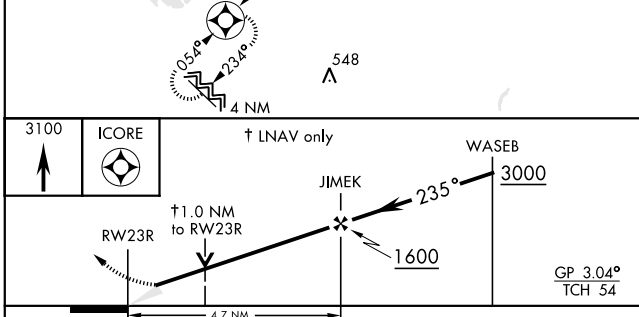
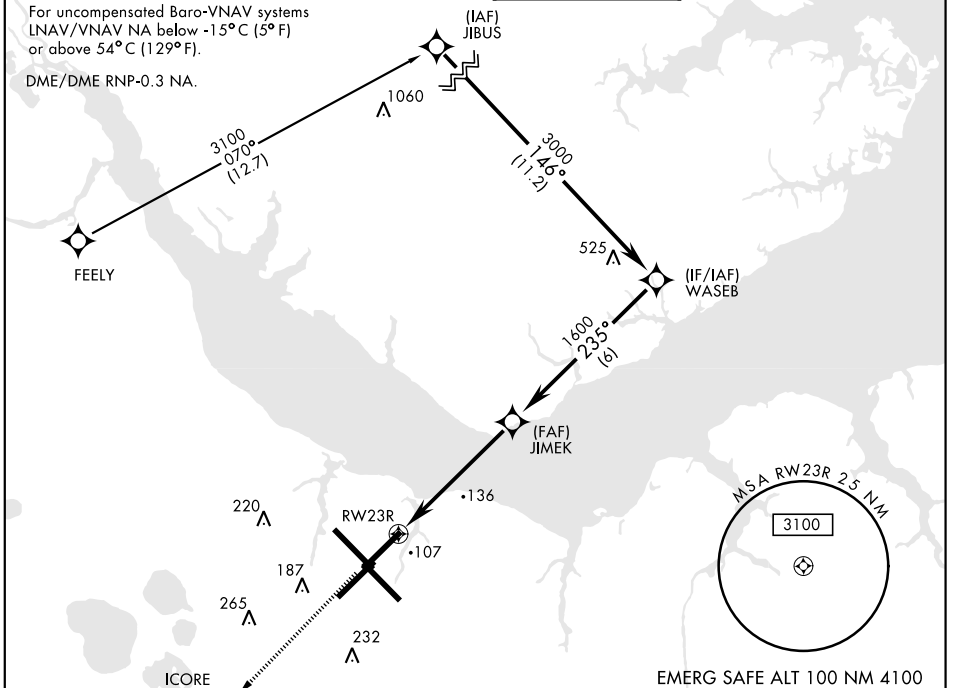
APCH CRS	Rwy ldg	<b>7553</b>
<b>235°</b>	TDZE	<b>23</b>
	Arprt Elev	<b>29</b>

AL-471 [USN] CHERRY POINT MCAS (CUNNINGHAM FLD) (KNKT)

▼ \* When ALS inop, increase CAT ABCD vis to ¾ mile.  
\*\* When ALS inop, increase CAT ABCD to 1 mile.

MALS R	Missed Approach: Climb to 3100 direct ICORE and hold. Continue climb in hold to 3100.
--------	---

ATIS	CHERRY POINT APP CON	CHERRY POINT TOWER	GND CON	CLNC DEL	ASR/PAR
<b>127.475</b>	(E) <b>124.1 268.7</b> (abv 2600')	<b>121.3 340.2</b>	<b>128.625</b>	<b>125.95</b>	
<b>244.875</b>	(E) <b>132.575 299.6</b> (at/blw 2600') (W) <b>119.35 377.175</b> (N) <b>119.75 360.775</b>		<b>239.025</b>	<b>316.125</b>	



EMERG SAFE ALT 100 NM 4100

ELEV	<b>29</b>	TDZE	<b>23</b>
------	-----------	------	-----------

Rwy 32R, 23L, 14R, 5L marked in center mat area. 235° to RWY 23R

HIRL all Rwy  
REIL Rwy 5L and 14R  
Rwy 5L-23R ldg 7553',  
14R-32L ldg 7551'

CATEGORY	A	B	C	D
LNAV/VNAV DA*	273-½	250 (300-½)		278-½ 255 (300-½)
LNAV MDA**	400-½	377 (400-½)	400-5/8	377 (400-5/8)
GP CIRCLING	540-1	511 (600-1)	600-1½ 571 (600-1½)	600-2 571 (600-2)

# RNAV (GPS) RWY 23R