

CHERRY POINT, NORTH CAROLINA

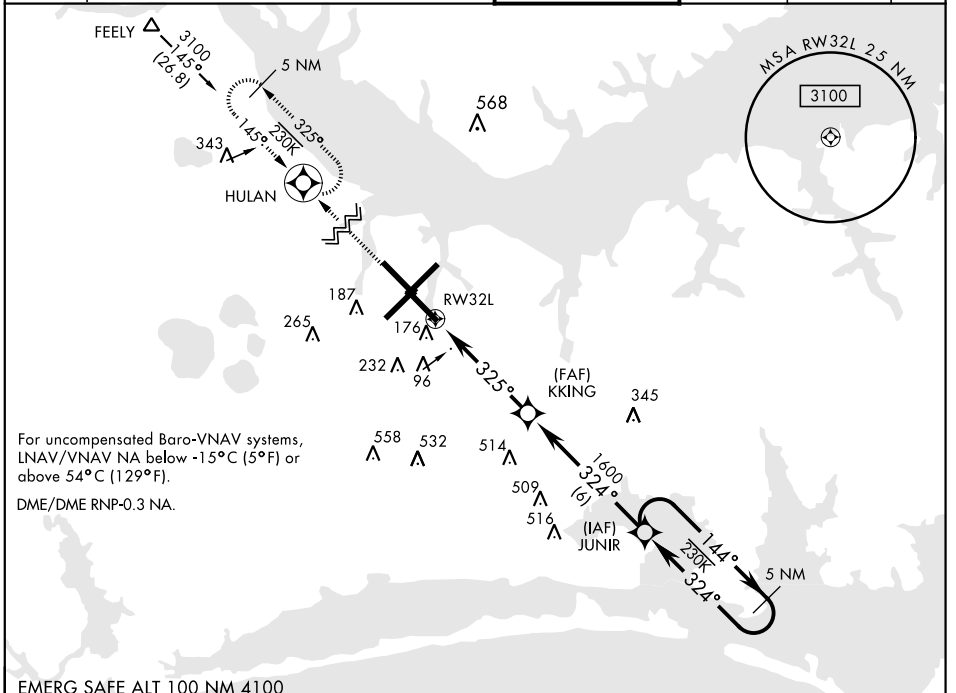
RNAV (GPS) RWY 32L

| | | | |
|--|-------------------------|-------------------------------|---------------------------------------|
| WAAS Chan 54304 W32A | APCH CRS 325° | Rwy ldg TDZE Arprt Elev | 7551 26 29 |
|--|-------------------------|-------------------------------|---------------------------------------|

AL-471 [USN] CHERRY POINT MCAS (CUNNINGHAM FLD) (KNKT)

| | | |
|--|------------|---|
| ▼ **When ALS inop, increase CAT ABCD vis to ¼ mile. ***When ALS inop, increase CAT ABCD vis to 1 ¼ mile. ****When ALS inop, increase CAT AB vis to 1 mile, CAT CD vis to 1 ¾ miles. | ALSF-1 | MISSED APPROACH: Climb to 3100 direct HULAN and hold. |
| | | |

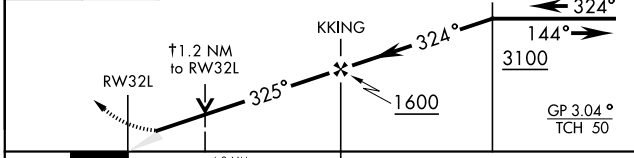
| | | | | | |
|--|--|--|---|---|-------------|
| ATIS 127.475 244.875 | CHERRY POINT APP CON (E) 124.1 268.7 (abv 2600') (E) 132.575 299.6 (at/blw 2600') (W) 119.35 377.175 (N) 119.75 360.775 | CHERRY POINT TOWER 121.3 340.2 | GND CON 128.625 239.025 | CLNC DEL 125.95 316.125 | ASR/ PAR |
|--|--|--|---|---|-------------|



For uncompensated Baro-VNAV systems, LNAV/VNAV NA below -15°C (5°F) or above 54°C (129°F).
DME/DME RNP-0.3 NA.

EMERG SAFE ALT 100 NM 4100

| | | |
|----------|-----------|---|
| 3100 | HULAN | VGSI and RNAV glidepath no coincident. † LNAV only |
|----------|-----------|---|



| CATEGORY | A | B | C | D |
|-----------------|-------|-------------|------------------------|----------------------|
| LPV DA* | 226-½ | | 200 | (200-½) |
| LNAV/ VNAV DA** | 406-¾ | | 380 | (400-¾) |
| LNAV MDA*** | 480-½ | 454 (500-½) | 480-¾ | 454 (500-¾) |
| CIRCLING | 540-1 | 511 (600-1) | 600-1½ 571 (600-1½) | 600-2 571 (600-2) |

| | |
|---------|---------|
| ELEV 29 | TDZE 26 |
|---------|---------|

Rwy 32R, 23L, 14R, 5L marked in center mat area.

HIRL all Rwy
REIL Rwy 5L and 14R
Rwy 5L-23R 7553', 14R-32L ldg 7551'

CHERRY POINT, NORTH CAROLINA

34°54'N-76°53'W

CHERRY POINT MCAS (CUNNINGHAM FLD) (KNKT)

Amtd 6 09NOV17

RNAV (GPS) RWY 32L