

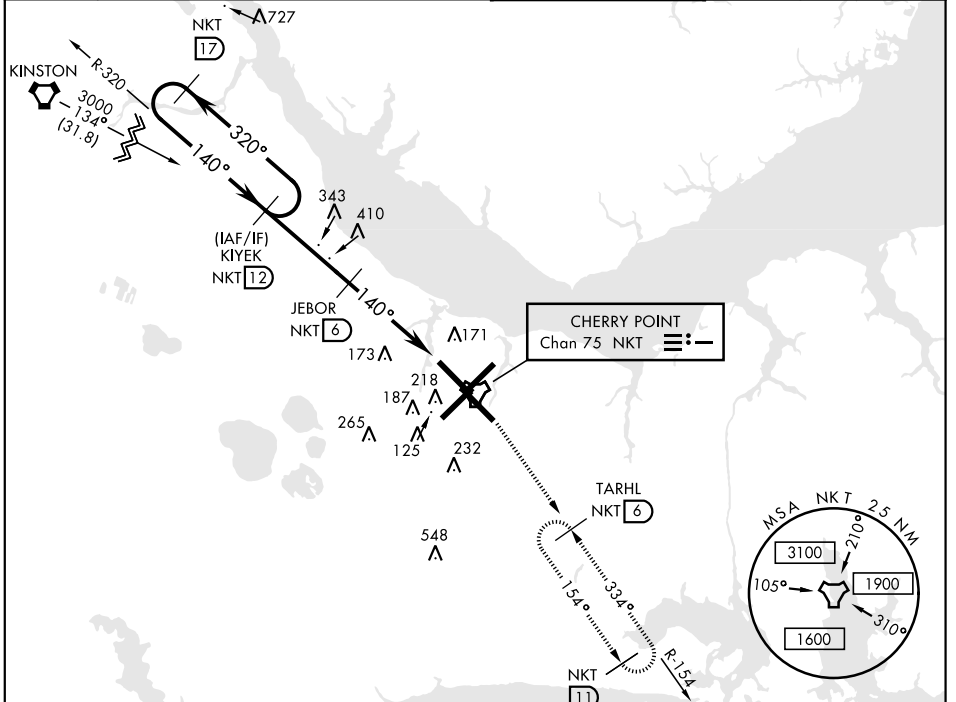
CHERRY POINT, NORTH CAROLINA

# TACAN RWY 14L

TACAN NKT Chan <b>75</b>	APCH CRS <b>140°</b>	Rwy ldg TDZE <b>8979</b> Arprt Elev <b>26</b> <b>29</b>	AL-471 [USN] CHERRY POINT MCAS (CUNNINGHAM FLD) (KNKT)
-----------------------------	-------------------------	--	--

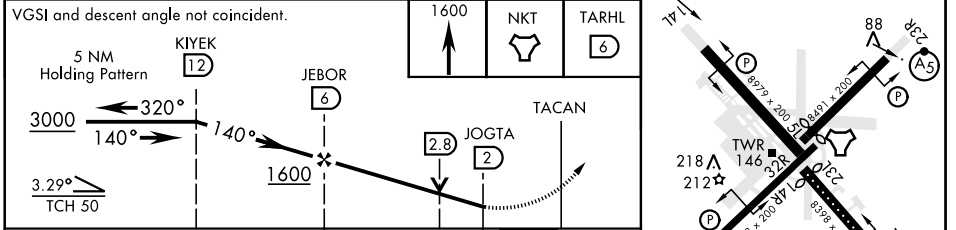
**MISSED APPROACH:** Climb to 1600 direct NKT TACAN, then direct TARHL and hold.

ATIS <b>127.475</b> <b>244.875</b>	(E) <b>124.1</b> <b>268.7</b> (abv 2600') (E) <b>132.575</b> <b>299.6</b> (at/blw 2600')	CHERRY POINT APP CON (N) <b>119.75</b> <b>360.775</b>	CHERRY POINT TOWER <b>121.3</b> <b>340.2</b>	GND CON <b>128.625</b> <b>239.025</b>	CLNC DEL <b>125.95</b> <b>316.125</b>	ASR/ PAR
--	---	--	---	---	---	-------------

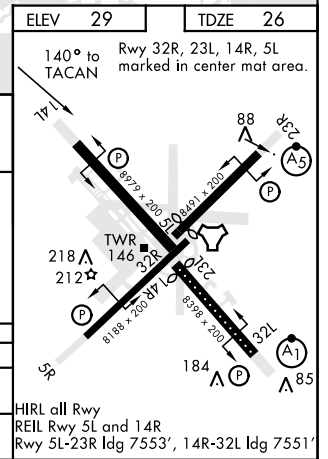


ELEV <b>29</b>	TDZE <b>26</b>
----------------	----------------

EMERG SAFE ALT 100 NM 4100



CATEGORY	A	B	C	D
S-14L	460-1 434 (500-1)		460-1 1/4 434 (500-1 1/4)	
CIRCLING	540-1	511 (600-1)	600-1 1/2 571 (600-1 1/2)	600-2 571 (600-2)



CHERRY POINT, NORTH CAROLINA 34° 54' N-76° 53' W CHERRY POINT MCAS (CUNNINGHAM FLD) (KNKT)

Amdt 5 09NOV17

# TACAN RWY 14L