

CHERRY POINT, NORTH CAROLINA

# TACAN RWY 32L

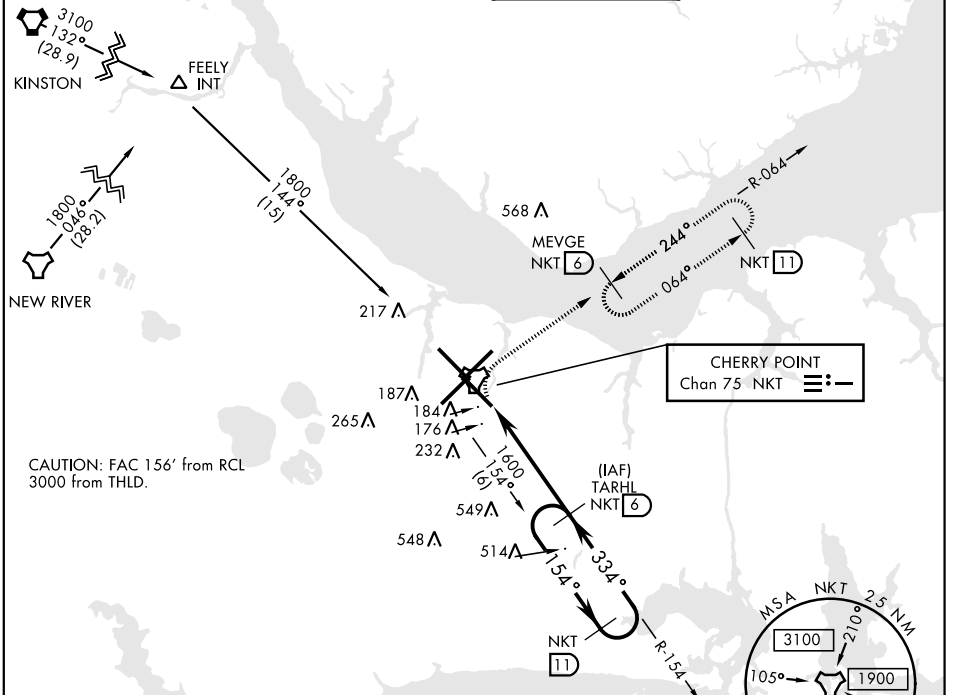
TACAN NKT Chan <b>75</b>	APCH CRS <b>334°</b>	Rwy ldg TDZE Arprt Elev <b>7551</b> <b>26</b> <b>29</b>	AL-471 [USN]	CHERRY POINT MCAS (CUNNINGHAM FLD) (KNKT)
-----------------------------	-------------------------	--	--------------	---

▼ \* When ALS inop, increase vis CAT AB to 1 mile, CAT CD to 1 3/8 miles.  
 \*\* Circling to land Rwy 5L NA at night.



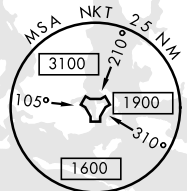
MISSED APPROACH: Climb on hdg 334°. At 500 climbing right turn to 1600 direct MEVGE and hold.

ATIS <b>127.475</b> <b>244.875</b>	CHERRY POINT APP CON (E) <b>124.1 268.7</b> (abv 2600') (E) <b>132.575 299.6</b> (at/blw 2600') (W) <b>119.35 377.175</b> (N) <b>119.75 360.775</b>	CHERRY POINT TOWER <b>121.3 340.2</b>	GND CON <b>128.625</b> <b>239.025</b>	CLNC DEL <b>125.95</b> <b>316.125</b>	ASR/ PAR
--	--	--	---	---	-------------

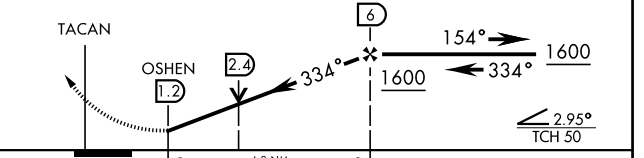
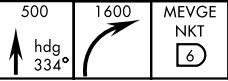
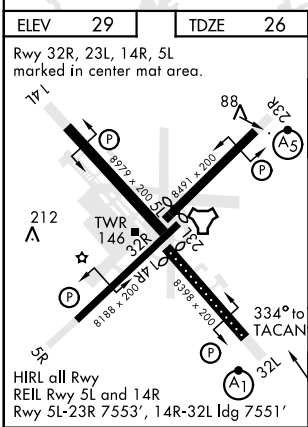


CAUTION: FAC 156' from RCL 3000 from THLD.

CHERRY POINT  
Chan 75 NKT



EMERG SAFE ALT 100 NM 4100



CATEGORY	A	B	C	D
S-32L *	480-1/2	454 (500-1/2)	480-7/8 454 (500-7/8)	
☑ CIRCLING **	540-1	511 (600-1)	600-1 1/2 571 (600-1 1/2)	600-2 571 (600-2)

CHERRY POINT, NORTH CAROLINA 34° 54' N-76° 53' W CHERRY POINT MCAS (CUNNINGHAM FLD) (KNKT)

Amtd 4 09NOV17

# TACAN RWY 32L