

|  |                        |   |
|--|------------------------|---|
| WAAS<br>CH <b>63002</b><br><b>W22A</b> | APP CRS<br><b>219°</b> | Rwy Idg <b>6153</b><br>TDZE <b>17</b><br>Apt Elev <b>18</b> |
|--|------------------------|---|

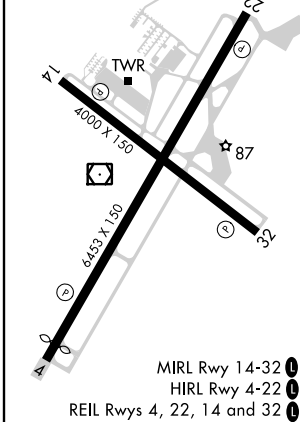
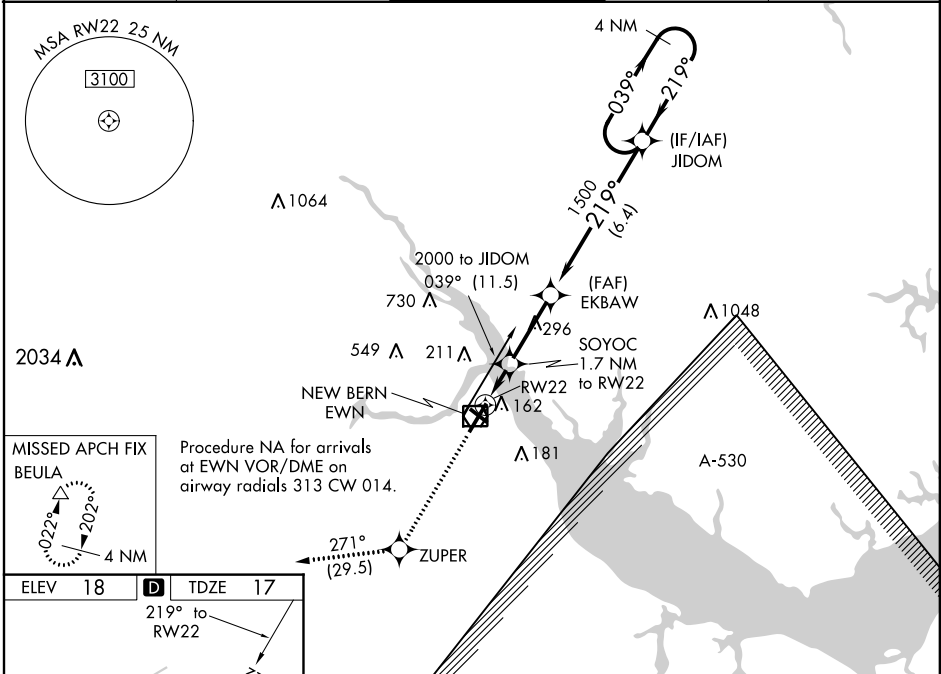
# RNAV (GPS) RWY 22

COASTAL CAROLINA RGNL (E'WN)

**⚠** Rwy 14, 32 helicopter visibility reduction below 1 SM NA. Rwy 22 helicopter visibility reduction below ¾ SM NA. Circling Rwy 14, 32 NA at night. Baro-VNAV NA when using Cherry Point altimeter setting. For uncompensated Baro-VNAV systems, LNAV/VNAV NA below -15°C (5°F) or above 54°C (130°F). DME/DME RNP-0.3 NA. When local altimeter setting not received, use Cherry Point altimeter setting and increase all DA 32 feet and all MDA 40 feet and increase LPV and LNAV/VNAV visibility ½ mile.

**MISSED APPROACH:**  
Climb to 3000 direct ZUPER and on track 271° to BEULA and hold.

|                        |   |   |                          |                         |
|------------------------|---|---|--------------------------|-------------------------|
| ASOS<br><b>118.525</b> | CHERRY POINT APP CON<br><b>119.35 374.9</b> | NEW BERN TOWER★<br><b>124.25 (CTAF) 0</b> | CLNC DEL<br><b>121.7</b> | GND CON<br><b>121.7</b> |
|------------------------|---|---|--------------------------|-------------------------|



|              |           |                      |                 |                      |
|--------------|-----------|----------------------|-----------------|----------------------|
| ELEV 18      | <b>D</b>  | TDZE 17              | 219° to RW22    |                      |
| 3000         | ZUPER     | tr 271°              | BEULA           | 4 NM Holding Pattern |
| *LNAV only.  |           | SOYOC 1.7 NM to RW22 | EKBAW 1500      | JIDOM                |
| RW22         |           | *580                 | 219°            | 039° → 2000          |
| 1.7 NM       |           | 2.9 NM               | 6.4 NM          | GP 3.00° TCH 31      |
| CATEGORY     | A         | B                    | C               | D                    |
| LPV DA       | 269-7/8   |                      | 252 (300-7/8)   |                      |
| LNAV/VNAV DA | 376-1 1/4 |                      | 359 (400-1 1/4) |                      |
| LNAV MDA     | 480-1     | 463 (500-1)          | 480-1 3/8       | 463 (500-1 3/8)      |
| CIRCLING     | 480-1     | 462 (500-1)          | 480-1 1/2       | 580-2                |
|              |           |                      | 462 (500-1 1/2) | 562 (600-2)          |