

WAAS CH <b>69402</b> <b>W04A</b>	APP CRS <b>039°</b>	Rwy Idg <b>5753</b> TDZE <b>17</b> Apt Elev <b>18</b>
----------------------------------------	------------------------	-------------------------------------------------------------

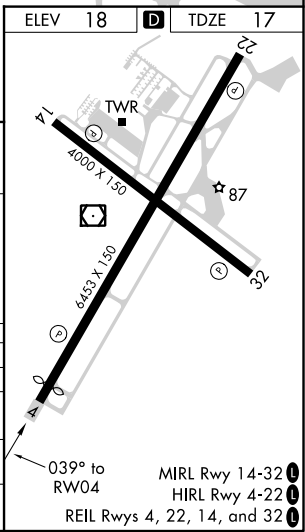
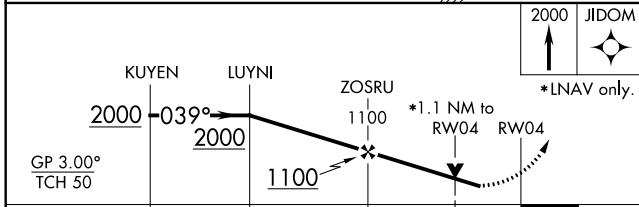
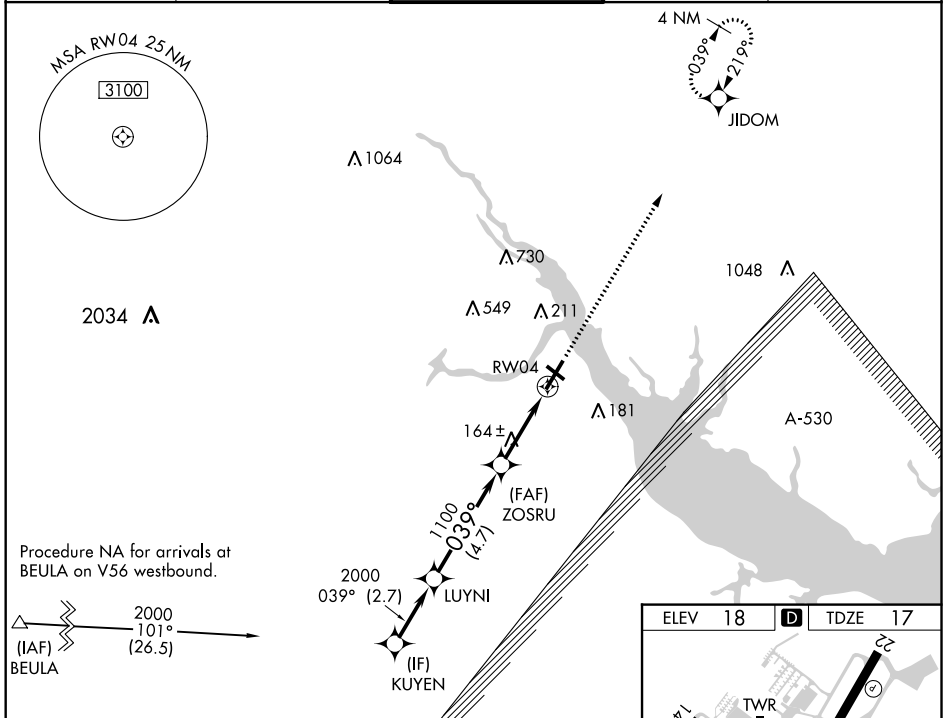
# RNAV (GPS) RWY 4

COASTAL CAROLINA RGNL (EWN)

**⚠** Baro-VNAV NA when using Cherry Point altimeter setting. For uncompensated Baro-VNAV systems, LNAV/VNAV NA below 0°C (32°F) or above 54°C (130°F). DME/DME RNP-0.3 NA. VDP NA with Cherry Point altimeter setting. Helicopter visibility reduction below 3/4 mile NA. When local altimeter setting not received, use Cherry Point altimeter setting and increase all DA 32 feet and all MDA 40 feet, increase LNAV/VNAV all Cats visibility 1/8 mile, increase LNAV Cats C/D and Circling Cat C visibilities 1/4 mile. Night Landing: Rwy 14, 32 NA.

**MISSED APPROACH:**  
Climb to 2000 direct JIDOM and hold.

ASOS <b>118.525</b>	CHERRY POINT APP CON <b>119.35 374.9</b>	NEW BERN TOWER* <b>124.25 (CTAF) 0</b>	CLNC DEL <b>121.7</b>	GND CON <b>121.7</b>
------------------------	---------------------------------------------	-------------------------------------------	--------------------------	-------------------------



CATEGORY	A		B		C		D
LPV DA			342-1 1/8		325 (400-1 1/8)		
LNAV/VNAV DA			435-1 3/8		418 (500-1 1/8)		
LNAV MDA	420-1 403 (500-1)		420-1 1/8		403 (500-1 1/8)		
CIRCLING	480-1 462 (500-1)	520-1 502 (600-1)	600-1 1/2 582 (600-1 1/2)	1080-3 1062 (1100-3)			