

ILS or LOC/DME RWY 1

LOC I-NCA 111.10 Chan 48	APCH CRS 008°	Rwy Idg TDZE Arprt Elev	4789 24 26
--	-------------------------	-------------------------------	---------------------------------------

AL-732 [USN]

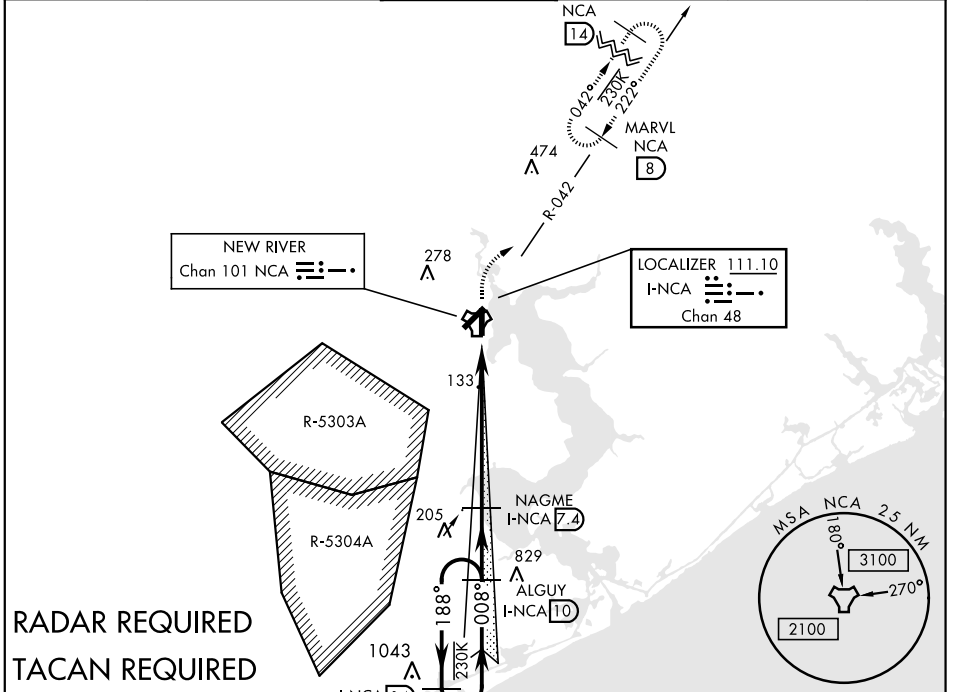
NEW RIVER MCAS (MC CUTCHEON FLD) (KNCA)

▼ *When ALS inop, increase CAT ABCD vis to ¾ mile.
**When ALS inop, increase CAT ABCD vis to 1 mile.



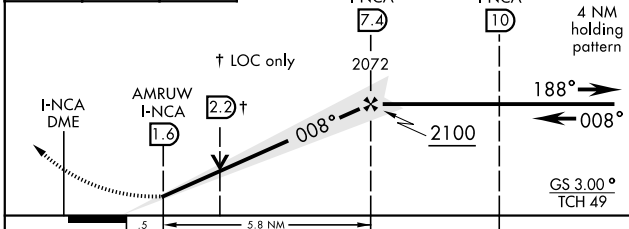
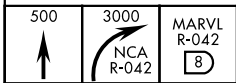
MISSED APPROACH: Climb to 500, then climbing right turn to 3000, intercept NCA R-042 to MARVL and hold, continue climb-in-hold to 3000.

ATIS ★ 288.325	CHERRY POINT APP CON 119.35 377.175	NEW RIVER TOWER ★ 120.00* 360.2	GND CON 121.8 254.275	CLNC DEL 269.25	ASR/PAR
--------------------------	---	---	---------------------------------	---------------------------	---------



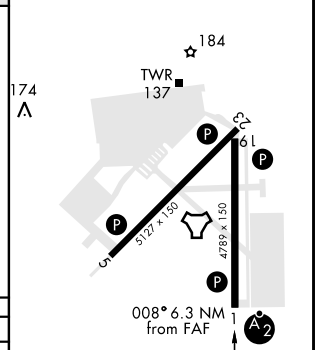
RADAR REQUIRED
TACAN REQUIRED

EMERG SAFE ALT 100 NM 3400



CATEGORY	A	B	C	D
S-ILS 1*	224-¾	200	(200-¾)	
S-LOC 1**	400-¾	376	(400-¾)	
CIRCLING	500-1	474 (500-1)	500-1½ 474 (500-1½)	580-2 554 (600-2)

ELEV 26	TDZE 24
---------	---------



	60	90	120	150	180
Knots	60	90	120	150	180
Min:Sec	5:42	3:48	2:51	2:17	1:54

ILS or LOC/DME RWY 1