

JACKSONVILLE, NORTH CAROLINA

RNAV (GPS) RWY 1

AL-732 [USN] NEW RIVER MCAS (MC CUTCHEON FLD)(KNCA)

APCH CRS	Rwy ldg	4789
008°	THRE	24
	Arprt Elev	26

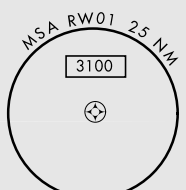
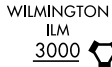
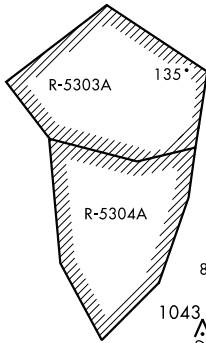
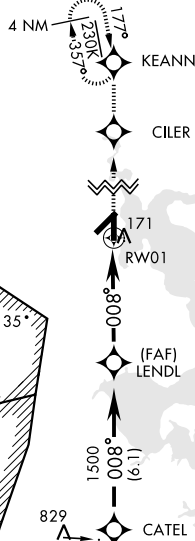
▼ * When ALS inop, increase vis CAT AB to 1/8 mile, CD to 1 mile.
 ** When ALS inop, increase vis CAT AB to 1 mile, CAT CD to 1 1/2 miles.



MISSED APPROACH: Climb to 1500 direct CILER, 008° track to KEANN and hold.

ATIS ★	CHERRY POINT APP CON	NEW RIVER TOWER★	GND CON	CLNC DEL	ASR/PAR
288.325	119.35 377.175	120.00★ 360.2	121.8 254.275	269.25	

Baro VNAV NA below -15°C (5°F) and above 54°C (130°F).
 DME/DME RNP-0.3 NA.

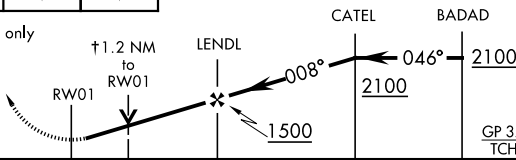


EMERG SAFE ALT 100 NM 3400

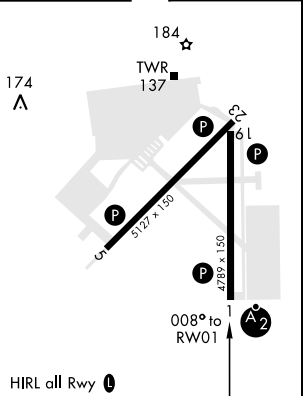


TCH (49) is not coincident with VGSI TCH (45)

† LNAV only



ELEV	26	THRE	24
------	----	------	----



CATEGORY	A		B		C		D	
LNAV/VNAV DA *	305-3/4	281 (300-3/4)	316-3/4	292 (300-3/4)	324-3/4	300 (300-3/4)	335-3/4	311 (400-3/4)
LNAV MDA **	440-3/4	416 (500-3/4)	440-1	416 (500-1)	440-1	416 (500-1)	440-1	416 (500-1)
CIRCLING	500-1	474 (500-1)	500-1 1/2	474 (500-1 1/2)	500-1 1/2	474 (500-1 1/2)	580-2	554 (600-2)

HIRL all Rwy 1

JACKSONVILLE, NORTH CAROLINA

34° 43' N-77° 26' W

NEW RIVER MCAS (MC CUTCHEON FLD)(KNCA)

Amdt 2 22JUN17

RNAV (GPS) RWY 1