

RNAV (GPS) RWY 23

WAAS Chan 80122 W23A	APCH CRS 233°	Rwy ldg 5127 TDZE 24 Arprt Elev 26
--	-------------------------	---

AL-732 [USN]

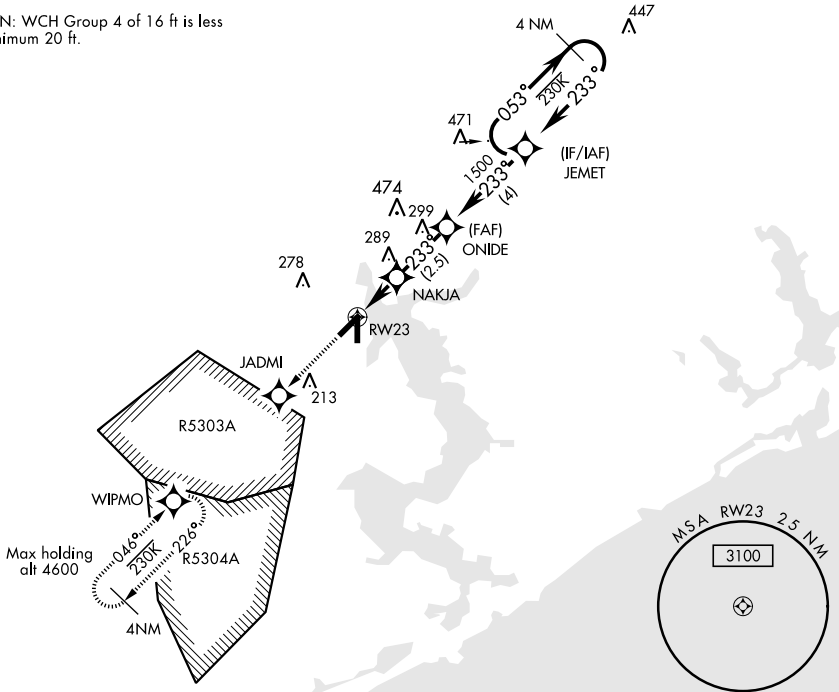
NEW RIVER MCAS (MC CUTCHEON FLD) (KNCA)

▼ For uncompensated Baro-VNAV systems, LNAV/VNAV NA below -15°C (5°F) or above 54°C (130°F). DME/DME RNP-0.3 NA.

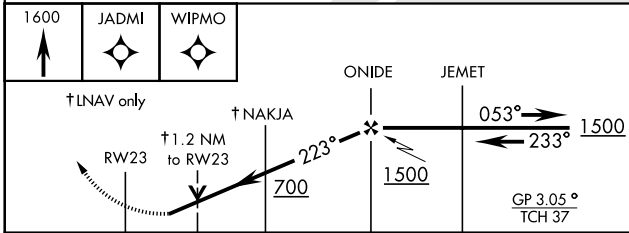
MISSED APPROACH: Climb to 1600 direct JADMI direct WIPMO and hold.

ATIS ★ 288.325	CHERRY POINT APP CON 119.35 377.175	NEW RIVER TOWER ★ 120.0 0 ★ 360.2	GND CON 121.8 254.275	CLNC DEL 269.25	ASR/ PAR
--------------------------	---	---	---------------------------------	---------------------------	-------------

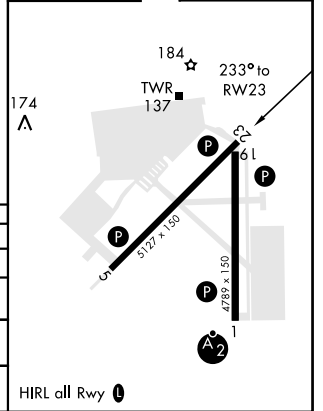
CAUTION: WCH Group 4 of 16 ft is less than minimum 20 ft.



EMERG SAFE ALT 100 NM 3400



ELEV 26	TDZE 24
---------	---------



CATEGORY	A		B		C		D	
LPV DA	274- ⁷ / ₈		250		(300- ⁷ / ₈)			
LNAV/VNAV DA	313-1 289 (300-1)	324-1 300 (300-1)	332-1 308 (400-1)	343-1 ¹ / ₈ 319 (400-1 ¹ / ₈)				
LNAV MDA	440-1	416 (500-1)	440-1 ¹ / ₈	416 (500-1 ¹ / ₈)				
CIRCLING	500-1	474 (500-1)	500-1 ¹ / ₂ 474 (500-1 ¹ / ₂)	580-2 554 (600-2)				

HIRL all Rwy 0

RNAV (GPS) RWY 23