

TACAN RWY 19

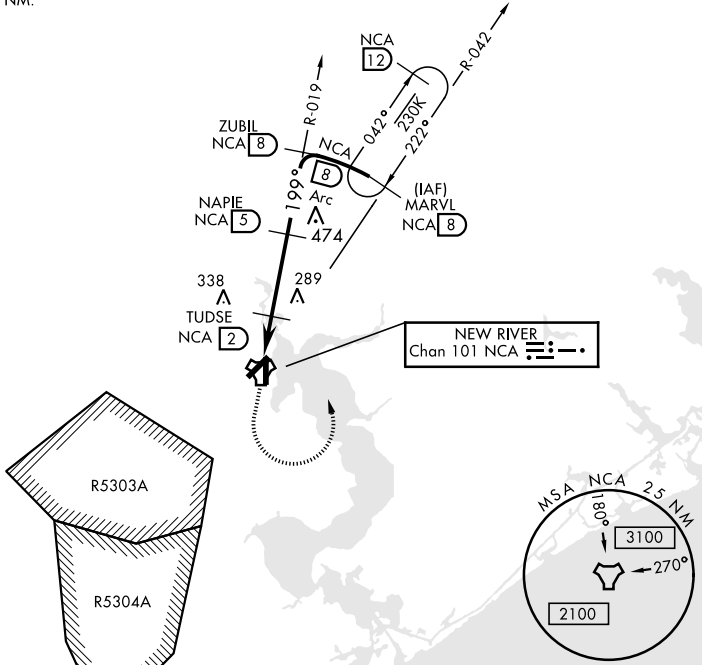
TACAN NCA Chan 101	APCH CRS 199°	Rwy ldg TDZE Arprt Elev 4789 23 26
---------------------------	----------------------	---

AL-732 [USN] NEW RIVER MCAS (MC CUTCHEON FLD)(KNCA)

MISSED APPROACH: Climbing left turn to 1500 intercept NCA R-042 direct MARVL (R-042/8 DME) and hold.

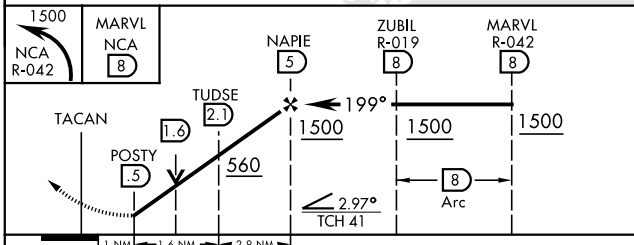
ATIS ★ 288.325	CHERRY POINT APP CON 119.35 377.175	NEW RIVER TOWER★ 120.00★ 360.2	GND CON 121.8 254.275	CLNC DEL 269.25	ASR/PAR
-----------------------	--	---------------------------------------	------------------------------	------------------------	---------

CAUTION: Inmed seg len 3 NM.

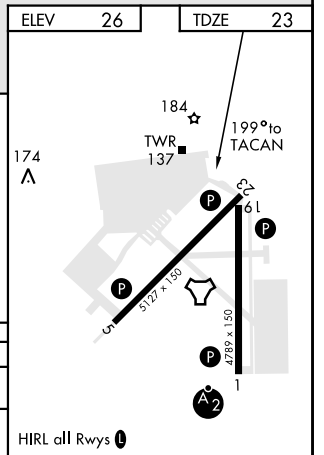


RADAR REQUIRED

EMERG SAFE ALT 100 NM 3400



CATEGORY	A		B	C		D
S-19	440-1	417	(500-1)	440-1 1/8	417	(500-1 1/8)
CIRCLING	500-1	474	(500-1)	500-1 1/2	580-2	554 (600-2)



TACAN RWY 19