

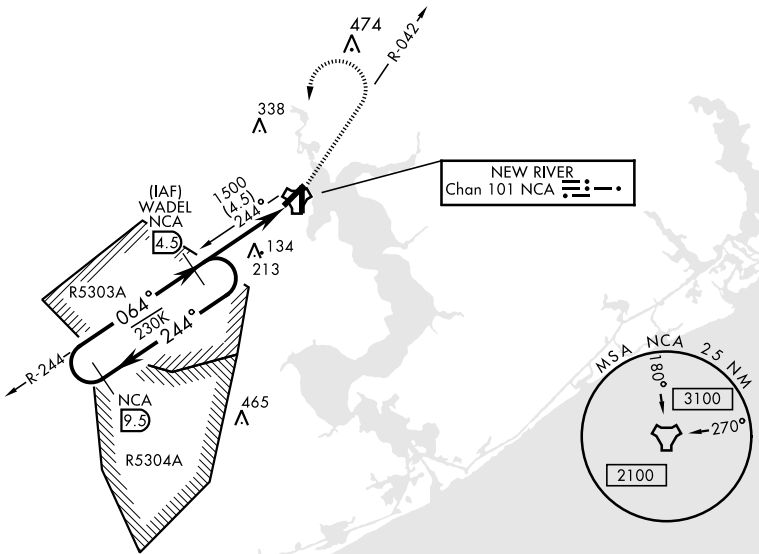
TACAN RWY 5

TACAN NCA Chan 101	APCH CRS 064°	Rwy Idg 5127
		TDZE 26
		Arprt Elev 26

AL-732 [USN] NEW RIVER MCAS (MC CUTCHEON FLD)(KNCA)

▽ MISSED APPROACH: Climbing left turn to 1500 via NCA R-042. Then left turn direct NCA TACAN, then via NCA R-244 direct WADEL and hold.

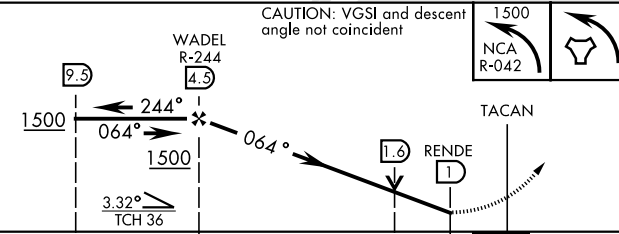
ATIS ★ 288.325	CHERRY POINT APP CON 119.35 377.175	NEW RIVER TOWER★ 120.00★ 360.2	GND CON 121.8 254.275	CLNC DEL 269.25	ASR/PAR
-------------------	--	-----------------------------------	--------------------------	--------------------	---------



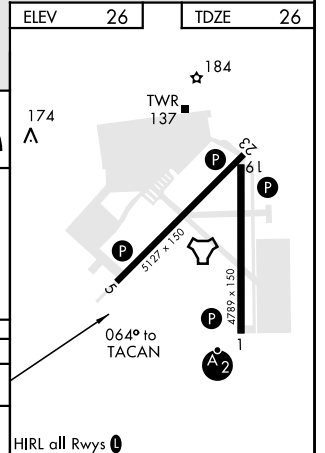
RADAR REQUIRED

EMERG SAFE ALT 100 NM 3400

CAUTION: VGSI and descent angle not coincident



CATEGORY	A	B	C	D
S-5	440-1	414 (500-1)	440-1½	414 (500-1½)
CIRCLING	500-1	474 (500-1)	500-1½ 474 (500-1½)	580-2 554 (600-2)



TACAN RWY 5