

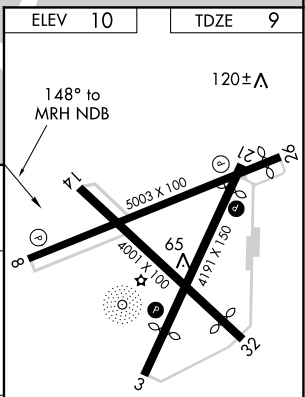
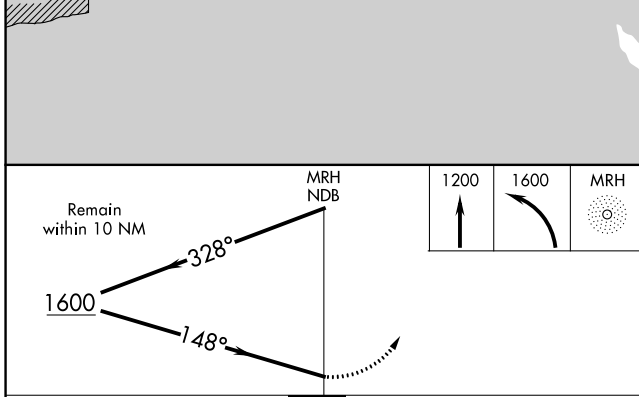
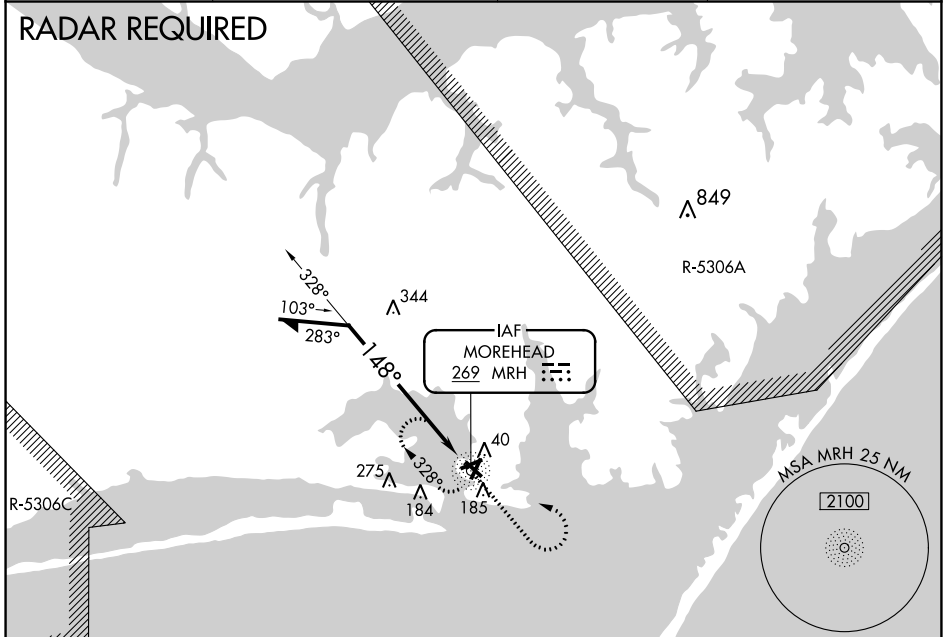
NDB MRH	APP CRS	Rwy Idg	4001
269	148°	TDZE	9
		Apt Elev	10

NDB RWY 14

MICHAEL J SMITH FIELD (MRH)

<p>▽ Helicopter visibility reduction below 1 SM NA. ATC clearance required to penetrate R-5306A and R-5306C. When local altimeter setting not received, use Cherry Point MCAS altimeter setting and increase all MDA 40 feet.</p> <p>△ NA Night landing: Rwy 3, 8, 14, 32 NA.</p>	<p>MISSED APPROACH: Climb to 1200 then climbing left turn to 1600 direct MRH NDB and hold.</p>
---	---

ASOS 135,375	CHERRY POINT APP CON 124.1 268.7	CHERRY POINT CLNC DEL 125.65	UNICOM 122.8 (CTAF) 0
------------------------	--	--	---------------------------------



CATEGORY	A	B	C	D
S-14	700-1 691 (700-1)		700-2 691 (700-2)	
CIRCLING	700-1 690 (700-1)		700-2 690 (700-2)	700-2 1/4 690 (700-2 1/4)

REIL Rwy 8 and 26 **0**
MIRL Rwy 3-21 and 8-26 **0**