

APP CRS	Rwy Idg	<b>3327</b>
<b>033°</b>	TDZE	<b>9</b>
	Apt Elev	<b>11</b>

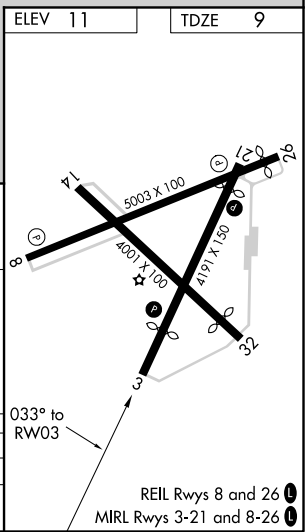
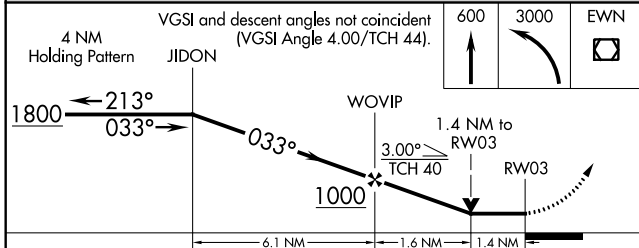
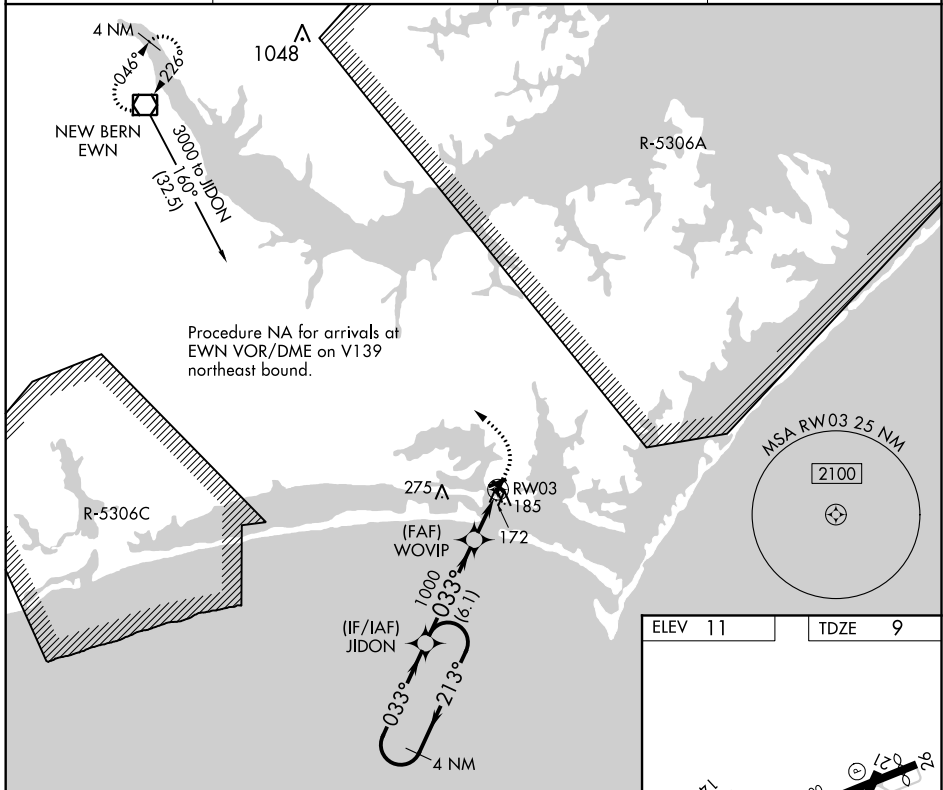
# RNAV (GPS) RWY 3

MICHAEL J SMITH FIELD (MR.H)

**⚠** Circling Rwy 8, 14, 32 NA at night. DME/DME RNP-0.3 NA. ATC clearance required to penetrate R-5306A and R-5306C. When local altimeter setting not received, use Cherry Point MCAS altimeter setting and increase all MDA 40 feet. Rwy 3 helicopter visibility reduction below 3/4 SM NA. VDP NA when using Cherry Point MCAS altimeter setting. Rwy 8, 14, 32 helicopter visibility reduction below 1 SM NA.

**MISSED APPROACH:** Climb to 600 then climbing left turn to 3000 direct EWN VOR/DME and hold.

ASOS <b>135.375</b>	CHERRY POINT APP CON <b>124.1 268.7</b>	CLNC DEL <b>125.65</b>	UNICOM <b>122.8 (CTAF)</b>
------------------------	--	---------------------------	-------------------------------



CATEGORY	A	B	C	D
LNAV MDA	480-1	471 (500-1)		NA
CIRCLING	540-1	529 (600-1)		NA