

WAAS CH 97727 W08A	APP CRS 076°	Rwy Idg TDZE Apt Elev	5003 8 11
--	------------------------	-----------------------------	--------------------------------------

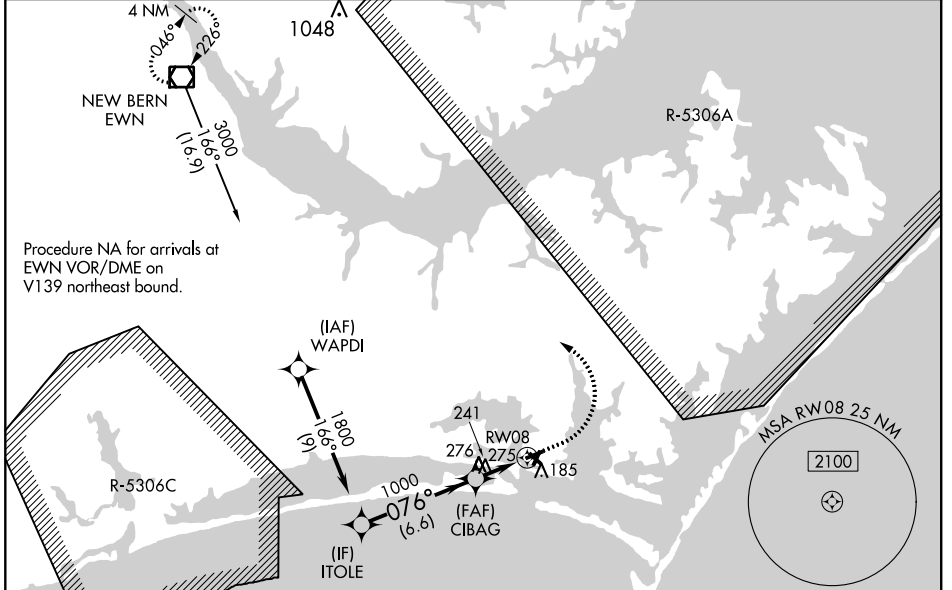
RNAV (GPS) RWY 8

MICHAEL J SMITH FIELD (MRH)

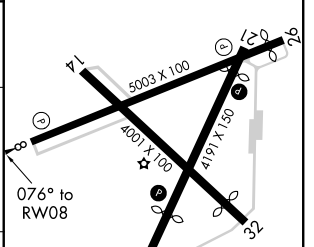
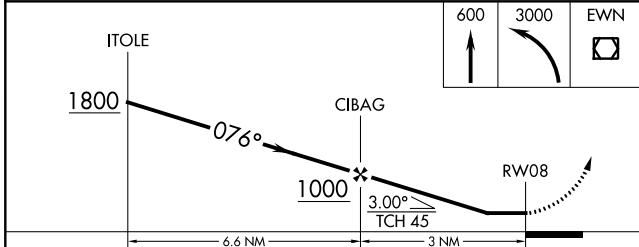
⚠ DME/DME RNP-0.3 NA. ATC clearance required to penetrate R-5306A and R-5306C. Rwy 8, 14, 32 helicopter visibility reduction below 1 SM NA. When local altimeter setting not received, use Cherry Point MCAS altimeter setting and increase all MDA 40 feet and LP Cats C/D and LNAV Cats C/D visibility ½ mile. Straight-in Rwy 8 NA at night, Circling Rwy 8, 14, 32 NA at night.

⚠ MISSED APPROACH: Climb to 600 then climbing left turn to 3000 direct EWN VOR/DME and hold.

ASOS 135.375	CHERRY POINT APP CON 124.1 268.7	CLNC DEL 125.65	UNICOM 122.8 (CTAF) 0
------------------------	--	---------------------------	---------------------------------



ELEV 11	TDZE 8
----------------	---------------



CATEGORY	A	B	C	D
LP MDA	500-1	492 (500-1)	500-1 $\frac{3}{8}$	492 (500-1 $\frac{3}{8}$)
LNAV MDA	540-1	532 (600-1)	540-1 $\frac{1}{2}$	532 (600-1 $\frac{1}{2}$)
CIRCLING	540-1	529 (600-1)	540-1 $\frac{1}{2}$ 529 (600-1 $\frac{1}{2}$)	620-2 609 (700-2)

REIL Rwy 8 and 26 **0**
MIRL Rwy 3-21 and 8-26 **0**