

WAAS CH <b>93825</b> <b>W03A</b>	APP CRS <b>027°</b>	Rwy Idg TDZE <b>36</b> Apt Elev <b>36</b>	<b>5500</b>
--	------------------------	---	-------------

# RNAV (GPS) RWY 3

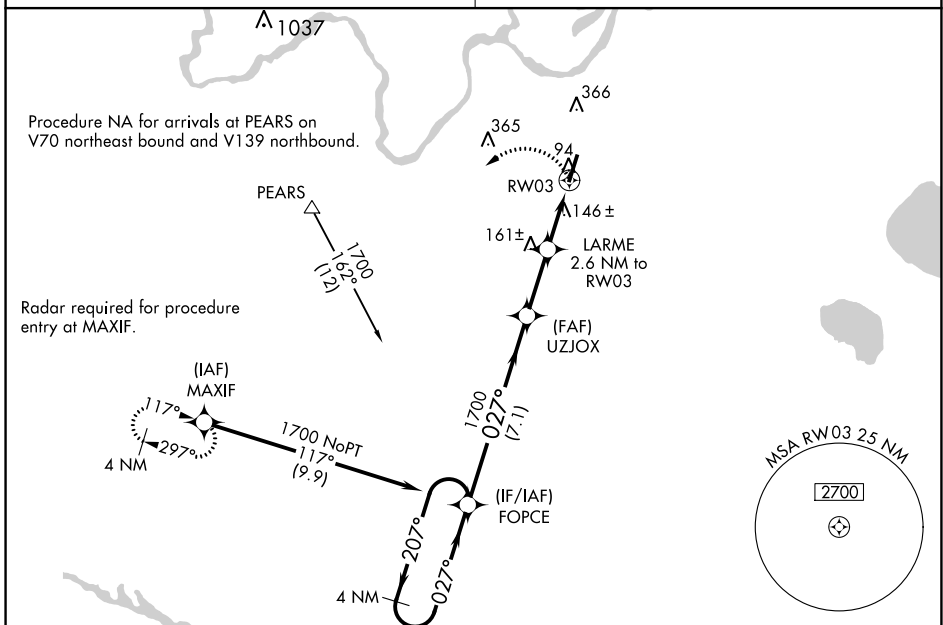
PLYMOUTH MUNI (PMZ)

**⚠** Use Northeastern Rgnl altimeter setting; when not received, use Coastal Carolina Rgnl altimeter setting and increase all MDA 80 feet and increase Cat C visibility 1/4 mile.  
**⚠ NA** When VGSI inop, procedure NA at night. DME/DME RNP-0.3 NA.  
 Visibility reduction by helicopters NA.

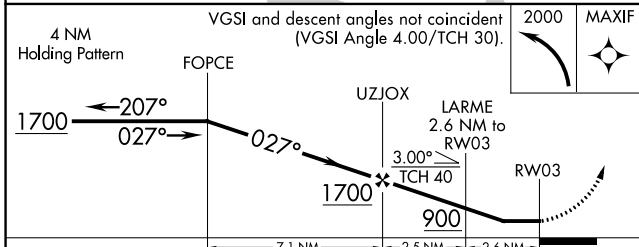
**MISSED APPROACH:** Climbing left turn to 2000 direct MAXIF and hold.

CHERRY POINT  
**119.35 377.175**

UNICOM  
**122.8 (CTAF)**



Procedure NA for arrivals at PEARS on V70 northeast bound and V139 northbound.  
 Radar required for procedure entry at MAXIF.



CATEGORY	A	B	C	D
LP MDA	440-1	404 (500-1)	440-1 1/8 404 (500-1 1/8)	NA
LNAV MDA	460-1	424 (500-1)	460-1 1/4 424 (500-1 1/4)	NA
CIRCLING	520-1	484 (500-1)	720-2 684 (700-2)	NA

