

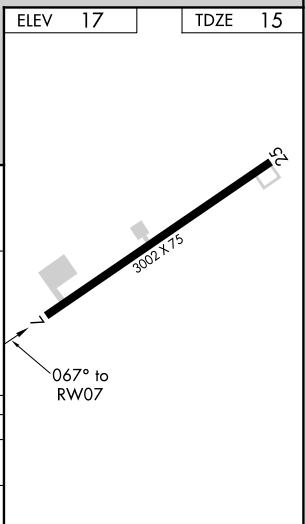
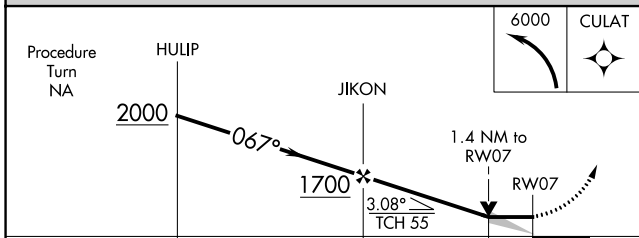
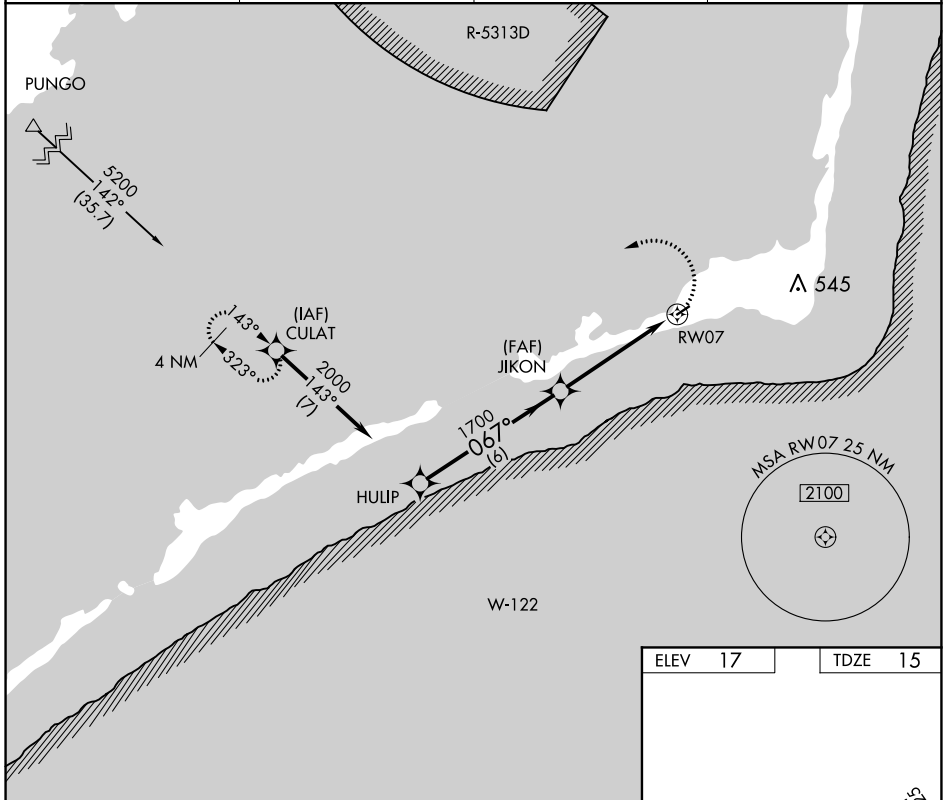
APP CRS	Rwy Idg	<b>3002</b>
<b>067°</b>	TDZE	<b>15</b>
	Apt Elev	<b>17</b>

# RNAV (GPS) RWY 7

BILLY MITCHELL (HSE)

Procedure NA at night. GPS or RNP-0.3 required. DME/DME RNP-0.3 NA.	MISSED APPROACH: Climbing left turn to 6000 direct CULAT WP and hold.
---	---

ASOS <b>118.375</b>	CHERRY POINT APP CON <b>119.75 360.775</b>	RALEIGH RADIO <b>122.3</b>	CTAF <b>122.9</b>
------------------------	---	-------------------------------	----------------------



CATEGORY	A	B	C	D
LNVA MDA	500-1	485 (500-1)	500-1¼ 485 (500-1¼)	NA
CIRCLING	560-1	543 (600-1)	560-1½ 543 (600-1½)	NA