

NDB MQI	APP CRS	Rwy Idg	<b>3012</b>
<b>370</b>	<b>174°</b>	TDZE	<b>13</b>
		Apt Elev	<b>13</b>

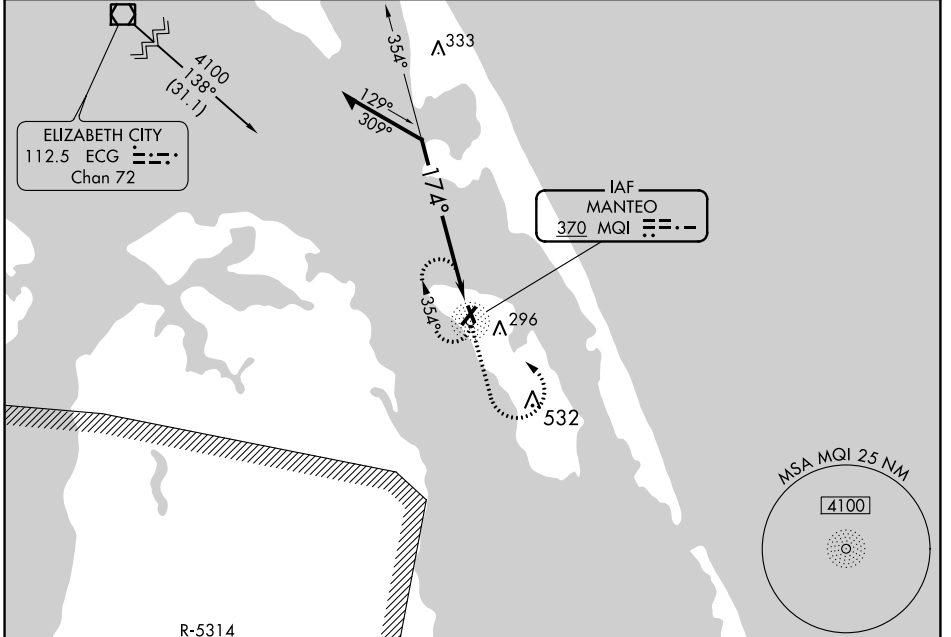
# NDB RWY 17

DARE COUNTY RGNL (MQI)

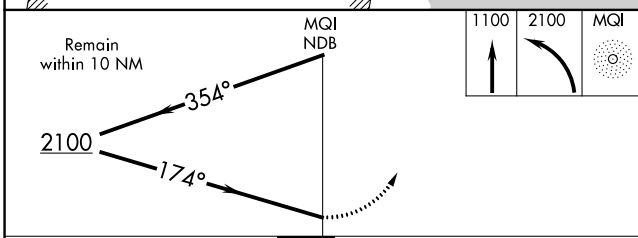
**▼** Helicopter visibility reduction below 1 SM NA. Night landing Rwy 17 NA. When local altimeter setting not received, use Elizabeth City altimeter setting and increase all MDA 80 feet, increase S-17 and Circling Cat B visibility ¼ mile and Cat C visibility ½ mile.

**▲ NA** MISSED APPROACH: Climb to 1100 then climbing left turn to 2100 direct MQI NDB and hold.

AWOS-3 <b>128.275</b>	CHERRY POINT <b>124.725 350.35</b>	UNICOM <b>122.8 (CTAF) 0</b>
--------------------------	---------------------------------------	---------------------------------



ELEV <b>13</b>	TDZE <b>13</b>
----------------	----------------



CATEGORY	A	B	C	D
S-17	700-1 687 (700-1)		700-2 687 (700-2)	NA
CIRCLING	700-1 687 (700-1)		700-2 687 (700-2)	NA

