

NDB MQI	APP CRS	Rwy Idg	4000
370	060°	TDZE	13
		Apt Elev	14

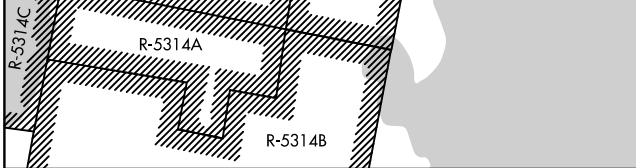
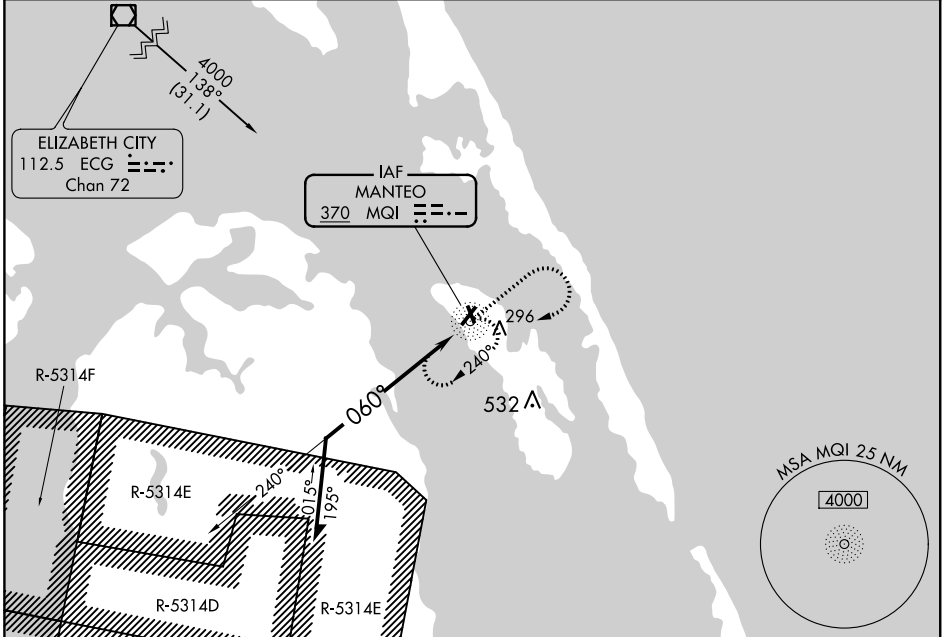
NDB RWY 5

DARE COUNTY RGNL (MQI)

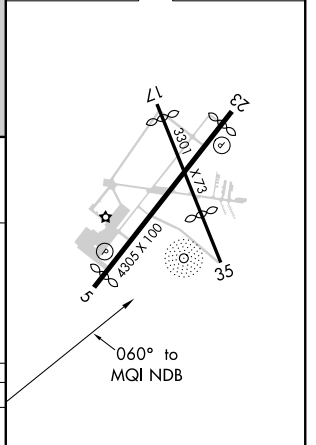
NA When R-5314-A, B, C, D, E, or F in effect procedure not authorized.

MISSED APPROACH: Climb to 1200 then climbing right turn to 1700 direct MQI NDB and hold.

AWOS-3 128.275	CHERRY POINT 124.725 350.35	UNICOM 122.8(CTAF) 0
--------------------------	---------------------------------------	--------------------------------



ELEV 14	TDZE 13
----------------	----------------



CATEGORY	A	B	C	D
S-5	640-1	627 (700-1)	640-1 ³ / ₄ 627 (700-1 ³ / ₄)	NA
CIRCLING	640-1	626 (700-1)	640-1 ³ / ₄ 626 (700-1 ³ / ₄)	NA