

WAAS CH 56326 W23A	APP CRS 227°	Rwy Idg 4004 TDZE 12 Apt Elev 13
--	------------------------	---

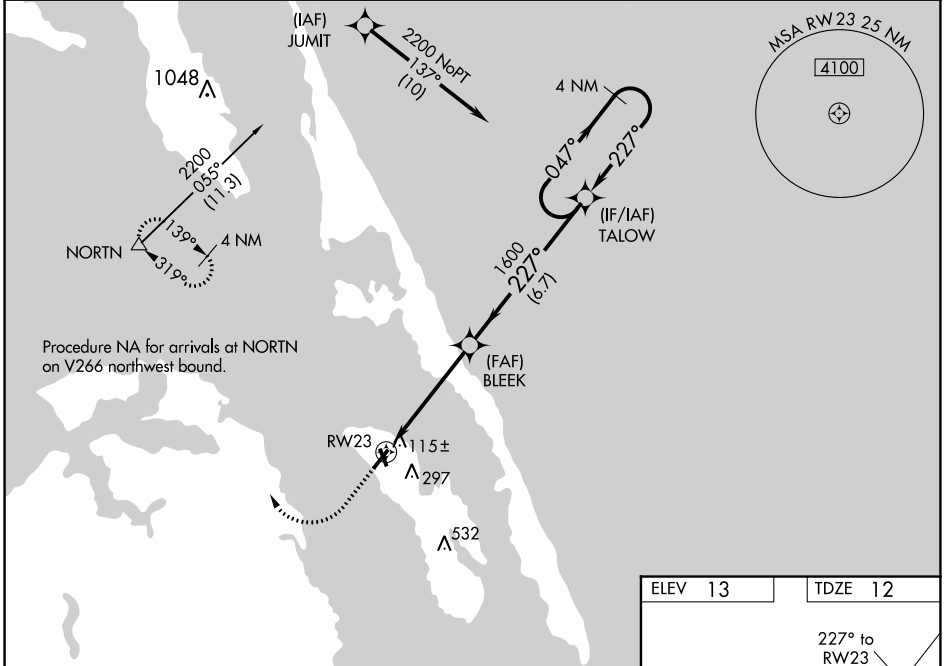
RNAV (GPS) RWY 23

DARE COUNTY RGNL (MQI)

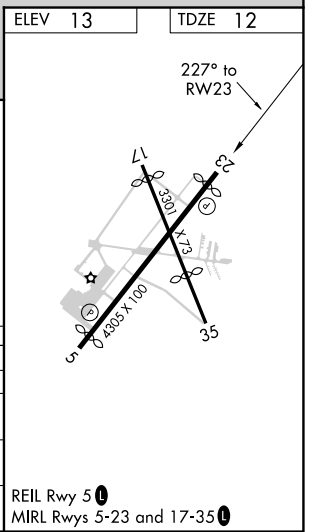
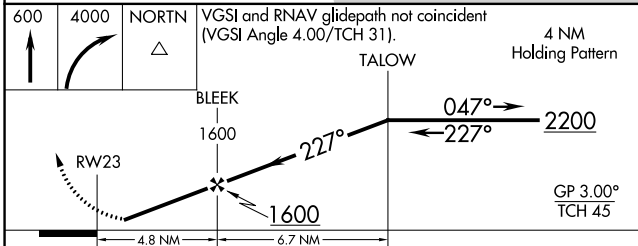
⚠ Baro-VNAV NA when using Elizabeth City altimeter setting. For uncompensated Baro-VNAV systems, LNAV/VNAV NA below -5°C (23°F) or above 54°C (130°F). When VGSI inop, Straight-in/Circling Rwy 23 procedure NA at night. DME/DME RNP-0.3 NA. Visibility reduction by helicopters NA. When local altimeter setting not received, use Elizabeth City altimeter setting and increase LPV DA to 404, LNAV/VNAV DA to 357 and all MDA 80 feet; increase LPV all Cats visibility and Circling Cat C visibility ¼ mile; increase LNAV/VNAV all Cats visibility ½ mile; and increase LNAV Cat C visibility ¾ mile.

MISSED APPROACH:
Climb to 600 then climbing right turn to 4000 direct NORTN and hold continue climb-in-hold to 4000.

AWOS-3 128.275	CHERRY POINT 124.725 350.35	UNICOM 122.8 (CTAF)
--------------------------	---------------------------------------	-------------------------------



Procedure NA for arrivals at NORTN on V266 northwest bound.



CATEGORY	A	B	C	D
LPV DA	332-1	320 (400-1)		NA
LNAV/VNAV DA	285-1	273 (300-1)		NA
LNAV MDA	520-1	508 (600-1)	520-1 3/8 508 (600-1 3/8)	NA
CIRCLING	600-1	587 (600-1)	600-1 1/2 587 (600-1 1/2)	NA

REIL Rwy 5 **⓪**
MIRL Rwy 5-23 and 17-35 **⓪**