

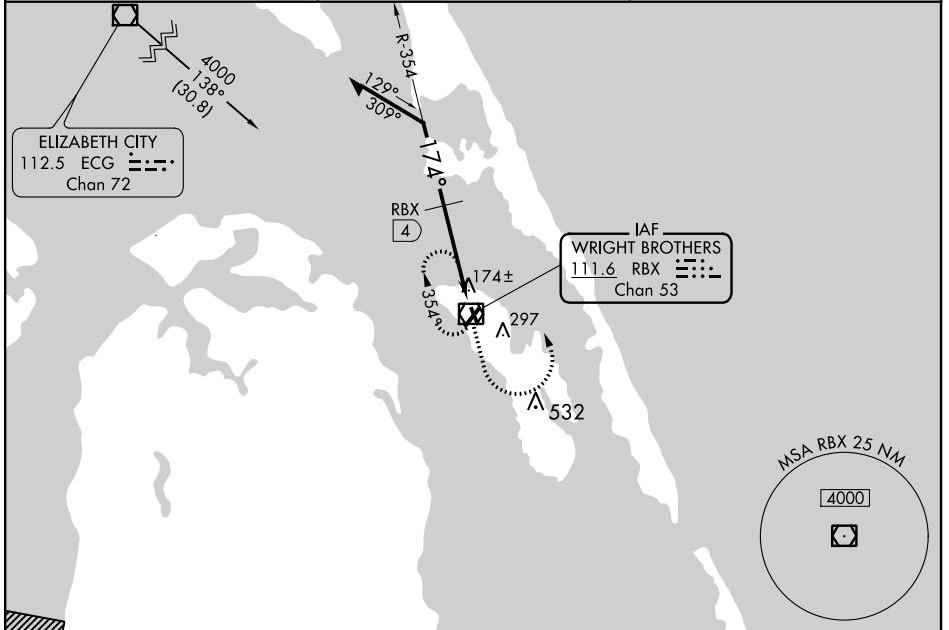
VOR/DME RBX 111.6 Chan 53	APP CRS 174°	Rwy Idg 3012 TDZE 13 Apt Elev 14
--	------------------------	---

VOR RWY 17
DARE COUNTY RGNL (MQI)

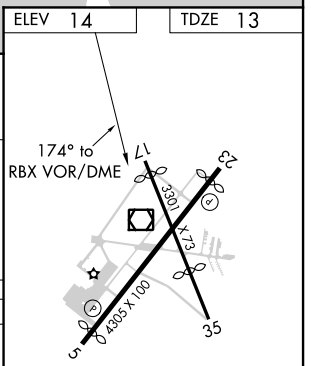
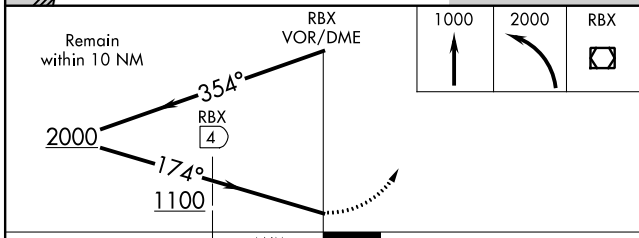
▼ When local altimeter setting not received, use Elizabeth City altimeter setting and increase all MDA 60 feet; increase DME minimums S-17 Cat C
▲ NA visibility ¼ mile and DME Minimums Circling Cat C visibility ½ mile.
 Helicopter visibility reduction below 1 SM NA. Night landing Rwy 17 NA.

MISSED APPROACH: Climb to 1000 then climbing left turn to 2000 direct RBX VOR/DME and hold.

AWOS-3 128.275	CHERRY POINT 124.725 350.35	UNICOM 122.8 (CTAF) 0
--------------------------	---------------------------------------	---------------------------------



ELEV 14	TDZE 13
----------------	----------------



CATEGORY	A	B	C	D
S-17	1100-1¼ 1087 (1100-1¼)	1100-1½ 1087 (1100-1½)	1100-3 1087 (1100-3)	NA
CIRCLING	1100-1¼ 1086 (1100-1¼)	1100-1½ 1086 (1100-1½)	1100-3 1086 (1100-3)	NA
DME MINIMUMS				
S-17	440-1	427 (500-1)	440-1¼ 427 (500-1¼)	NA
CIRCLING	600-1	586 (600-1)	600-1½ 586 (600-1½)	NA

REIL Rwy 5 0
MIRL Rws 5-23 and 17-35 0