

MCAS CHERRY POINT AIR TRAFFIC CONTROL FACILITY TRAINING



6 Jan 06



STATISTICAL REPORT 1997-2005

Produced and Compiled by ATC Training Support

TRAINEE LOSSES

Name	Join Date	Disposition	Reason
WATKINS	3 JAN 97	Admin Discharge	Theft
LYNCH	14 MAY 97	Revocation	Unable to Qualify
ELVIR	6 JUN 97	Medical	Headaches
QUETEL	12 JUN 97	Revocation	Unable to Qualify
PERRY	23 JUN 97	Medical	
WALLACE	28 JUL 97	Revocation	Unable to Qualify
HOPKINS	4 AUG 97	Suicide	
DONALD	26 AUG 97	Admin Discharge	Weight
YOUNG	8 OCT 97	Admin Discharge	Weight
MELVILLE	5 JAN 98	Admin Discharge	
MAKOYO	12 JAN 98	Admin Discharge	Disciplinary
WHITFIELD	8 MAY 98	Medical	Psychological
MCINTYRE	22 JUN 98	Medical	Psychological
ESPLING	26 JUN 98	Admin Discharge	Alcohol
HOLLINGSHEAD	8 MAR 99	Bad Conduct Discharge	Theft
SHEPLER	15 APR 99	Medical	Dyslexia
DAVIS	26 APR 99	Admin Discharge	
BOGGS	10 FEB 00	Admin Discharge	Theft
BODNER	14 MAR 00	Medical	
HUDSON	30 MAY 00	Medical	
COLLIER	29 NOV 00	Medical	Psychological
COLLINS	21 MAY 01	Suicide	
FORTUGNO	24 SEP 01	Admin Discharge	Desertion
PADRON	24 JAN 02	Revocation	Unable to Qualify
KOVALKEVICH	9 APR 02	Revocation	Unable to Qualify
BOOTH	17 APR 02	Medical	Headaches
BULLARD	30 AUG 02	Revocation	Disciplinary
MULLINS	30 DEC 02	Revocation	Unable to Qualify
COOPER	26 MAR 03	Admin Discharge	UA, Drugs
BAAS	2 JUN 03	Admin Discharge	UA, Drugs
WALSH	9 JUL 03	Medical	Eye Injury
DENTON	6 OCT 03	Admin Discharge	UA, Drugs
FRENCH	27 OCT 03	Medical	Alcohol
SEGERSEN	8 DEC 03	Revocation	Anxiety
MCDUGALL	24 FEB 04	Revocation	Alcohol
RAZUMOVSKY	17 JUN 05	Revocation	Unable to Qualify

Facility Management

ATC Facility Officer	Maj B. W. Horton
NCO In Charge	MSgt J. P. Sizemore
Training Chief	GySgt W. C. Bowling
Radar Chief	GySgt C. C. Robinett
Tower Chief	GySgt J. R. Roppo
Training Support Specialist	Mr. J. G. Hendrickson
Facility Watch Supervisors	Mr. R. S. Clay Mr. J. S. Knipple Mr. D. J. Nowak
Crew Chiefs	GySgt D. J. Spillman SSgt D. R. Sisler SSgt A. A. Mediate

ABBREVIATIONS

AE	Approach East
AR	Arrival Control
AW	Approach West
DC	Departure Control (No longer used)
AN	Approach North (New Sector)
FC	Radar Final Control
FR	Radar Flight Data
FT	Tower Flight Data
GC	Ground Control
LC	Local Control
RC	Radar Containment (No longer used)
Assoc	Associate Positions for Local, Approach & Arrival
OJT	On-the-Job Training
OJF	On-the-Job Familiarization
RA	Arrival Associate
WA	West Approach Associate
EA	East Approach Associate
LA	Local Control Associate

AIRPORT OPERATIONS COUNT

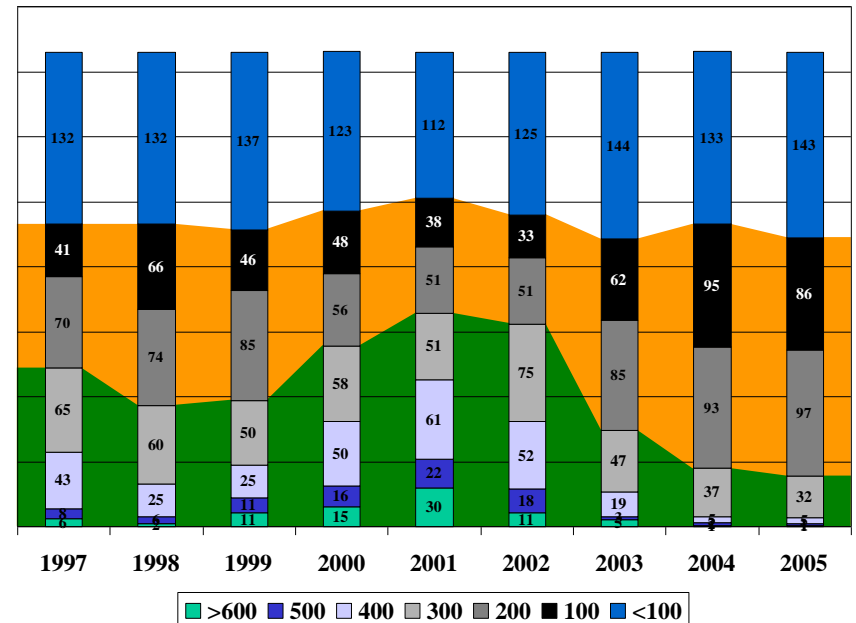
Year	TOWER	RADAR	TOTAL	GCA's
1997	79,094	98,693	177,787	8,970
1998	70,944	91,153	162,097	7,987
1999	77,224	91,710	168,934	7,983
2000	90,283	99,744	190,027	8,088
2001	105,442	113,300	218,742	9,113
2002	91,043	108,689	199,732	7,922
2003	65,220	88,829	154,049	6,986
2004	59,827	96,800	156,627	7,294
2005	56,603	89,400	146,003	6,762

First Term Marine Qualification Records

Position	Name	Qual Date	OJT Hours
FT	Cpl Olivas	1 Dec 99	35.75
GC	LCpl Ireland	14 Feb 02	28.27
LC	LCpl Wachter	15 Nov 02	52.53
FC	LCpl Renehan	12 Sep 02	67 GCAs
FR	LCpl Gandino-Saadein	7 Oct 03	28.28
AW	Sgt Ahmad	12 May 99	114.15
AE	Cpl Trowbridge	29 Jun 00	122.73
AR	Cpl Williams I.	24 Oct 01	72.17

Top OJT Instructor

Year	Instructor Name	OJT Hours
2000	Jason D. Woodin	466.38
2001	Jason D. Woodin	330.97
2002	John H. Hough	378.38
2003	Jason D. Woodin	446.13
2004	Karen L. Geddings	452.55
2005	Karen L. Geddings	607.60



NUMBER OF QUALIFICATIONS

Pos	1997	1998	1999	2000	2001	2002	2003	2004	2005	Tot
AE	5	5	6	7	4	4	5	4	10	50
AR	6	1	10	4	4	3	3	3	11	45
AW	6	5	13	10	8	5	10	9	14	80
DC/AN	6	4	9	5	0	0	0	3	10	37
FC	17	22	25	24	22	30	27	33	24	224
FR	19	19	34	27	24	33	27	33	27	243
FT	17	17	31	29	23	32	30	29	24	232
GC	13	17	22	26	31	26	33	26	23	217
LC	14	13	16	11	11	15	17	14	14	125
RC	5	2	8	5	0	0	0	0	0	20
Assoc	26	20	39	24	28	27	35	30	49	278
Tot	134	125	213	172	155	175	187	184	206	1,551

AVERAGE OJT HOURS FOR QUALIFICATION

Pos	1997	1998	1999	2000	2001	2002	2003	2004	2005
AE			223.4	187.6	198.1	198.1	200.0	208.3	248.2
AR				94.1	73.9	77.4	89.8	103.2	125.4
AW	219.6	247.0	231.7	193.2	197.3	198.2	174.5	176.2	251.0
FC	153	222	157	161	176	133	152	157	159
FR	58.2	72.1	56.8	49.5	44.7	34.7	52.5	52.0	58.9
FT	82.8	92.9	44.1	70.4	45.3	41.3	51.4	58.8	55.4
GC	102.6	91.4	62.7	62.8	54.9	60.7	56.5	67.6	73.2
LC	263.3	177.9	141.9	124.1	112.6	100.8	108.5	123.5	139.5

AVERAGE MONTHS FOR QUALIFICATION

Pos	1997	1998	1999	2000	2001	2002	2003	2004	2005
AE			10.5	9.1	9.7	9.7	9.5	9.4	9.3
AR				7.4	6.6	7.2	8.3	10.1	10.7
AW	10.3	11.7	10.4	8.9	7.5	8.1	8.0	8.4	7.7
FC	4.5	7.8	2.9	3.8	3.5	3.2	3.3	4.7	3.5
FR	3.1	3.1	1.9	1.7	1.7	1.3	1.7	2.1	1.9
FT	2.9	3.7	2.2	3.6	2.1	2.1	2.6	3.2	2.7
GC	5.3	6.0	3.3	4.1	3.6	4.1	4.4	4.7	3.5
LC	11.8	12.9	8.7	6.9	7.7	7.2	6.4	8.0	7.0

RADAR APPROACHES

Year	Total	Month Avg	OJT	Quals	Monthly Avg ReqCurrency
1998	7,987	666	3,266	22	
1999	7,983	665	4,033	25	
2000	8,088	674	3,724	24	
2001	9,113	759	3,215	22	
2002	7,922	660	3,129	30	51
2003	6,986	582	3,643	27	55
2004	7,294	608	3,784	33	57
2005	6,762	564	3,060	24	59

NUMBER OF TRAINEES FROM SCHOOL HOUSE

Year	MOS	REVO	MEDICAL	ADMIN	SUICIDE	TOTAL
1997	10	3	2	3	1	19
1998	14	0	2	3	0	19
1999	28	0	1	2	0	31
2000	12	0	3	1	0	16
2001	13	0	0	1	1	15
2002	21	4	1	0	0	26
2003	23	1	2	3	0	29
2004	18	1	0	0	0	19
2005	21	1	0	0	0	22
Tot	160	10	11	13	2	196

NUMBER OF MOS DESIGNATIONS

	7253	7257 R	7257 T	7252	7253	7254	Tot
1998	11			6		1	18
1999	20	4	12	8		9	53
2000	20	20	9	9		12	70
2001	13	13	8	10		7	51
2002	20	20	11	13		4	68
2003	23	23	11	9		10	76
2004	2	24	16	9	2	9	62
2005		17	10	12	13	16	68
Tot	109	121	77	76	15	68	466

TRAINING HOURS AND APPROACHES

	1997	1998	1999	2000	2001	2002	2003	2004	2005	Total
Hours for OJT	8,860.93	8,966.20	13,002.27	10,743.42	9,058.72	9,121.40	10,866.60	12,244.48	13,189.92	96,053.94
Hours for OJF	60.83	394.60	1,362.13	1,766.10	786.57	1,259.60	1,091.40	736.62	1,929.47	9,387.32
Hours for Skill Checks	23.70	562.20	1,161.83	1,188.30	901.35	1,001.48	928.00	902.68	1,039.50	7,709.04
Hours for PAR Simulator			570.60	287.95	89.92	232.50	324.02	493.37	897.05	2,895.41
Hours for Proficiency Classes	981.00	2,038.20	1,756.50	2,372.50	754.35	791.02	846.45	1,301.50	813.66	11,655.18
Hours for Team Meetings		38.64	295.16	208.66	338.00	192.68	180.00	254.28	717.48	2,224.90
Hours for Nonradar		106.24	1,402.34	1,011.00	1,126.24	732.50	1,249.16	833.67	437.48	6,898.63
Hours for Simulation (Stacks)		42.84	652.70	1,736.68	1,606.73	1,727.05	1,357.91	1,465.44	1,871.67	10,461.02
Hours for Lessons/Tests		1,247.46	5,082.26	4,408.20	2,650.94	3,860.46	3,047.66	2,648.80	2,521.64	25,467.42
Hours for OJTI Course			587.50	676.00	264.00	304.50	246.00	245.00	388.00	2,711.00
Hours for Self Study		175.62	502.33	582.35	264.37	448.25	377.18	634.62	337.78	3,322.50
Total Program Hours	9,926.46	13,572.00	26,375.62	24,981.16	17,841.19	19,671.44	20,514.38	21,760.46	24,143.65	178,786.36
Number of Positions Being Trained	224	184	275	256	243	270	279	322	309	1,555
Number of Trainees	72	73	98	77	77	87	92	105	106	302
Number of Position Qualifications	134	125	213	172	155	175	187	184	206	1,519
Number of MOS Designations		11	49	50	38	49	53	59	68	356
GCA's Conducted by Specialists		4,333	3,428	3,954	5,417	4,168	2,933	3,008	3,298	30,539
GCA's for OJT		3,226	4,033	3,724	3,215	3,129	3,643	3,784	3,060	27,814
GCA's for Skill Checks		428	522	410	481	625	410	502	404	3,782
Total GCA's	8,970	7,987	7,983	8,088	9,113	7,922	6,986	7,294	6,762	71,105
Simulated GCA's			1,682	382	297	737	1,356	2,375	6,398	13,227
OJT Hours by Position										
Approach East (AE/EA)	684.18	869.53	1,509.02	1,029.82	1,350.50	1,172.25	1,629.47	1,777.43	2,054.03	12,076.23
Approach North (AN)	NA	NA	NA	NA	NA	NA	NA	99.15	59.63	158.78
Arrival Control/Hand Off (AR/RA)	763.24	161.81	746.80	329.03	563.10	465.15	549.00	800.47	1,451.83	5,830.43
Approach West/Assistant (AW/WA)	851.34	1,555.85	2,318.90	1,770.63	1,631.97	1,492.94	1,940.47	2,002.33	2,276.70	15,841.13
Final Control (FC)	982.37	1,378.63	1,706.40	1,303.92	836.12	1,010.33	1,427.28	1,740.43	1,382.17	11,767.65
Radar Flight Data (FR)	1,071.67	1,203.95	1,585.45	1,186.03	1,041.10	1,106.93	1,148.97	1,281.12	1,182.62	10,807.84
Tower Flight Data (FT)	1,424.80	1,099.67	1,552.00	1,447.68	979.28	1,248.25	1,357.57	1,413.28	1,417.12	11,939.65
Ground Control (GC)	848.42	864.17	1,434.80	1,585.80	1,263.38	1,295.43	1,424.85	1,383.93	1,509.55	11,610.33
Local Control/Assistant (LC/LA)	1,628.23	1,065.77	1,586.76	1,563.72	1,393.26	1,330.11	1,389.00	1,746.34	1,856.27	13,559.46
Vehicle Operator Course										
Number of Courses Given				63	50	83	87	61	53	397
Number of Attendees				436	440	555	618	513	372	2,934
Hours of Instruction				31.50	25.00	41.50	43.50	30.50	26.50	198.50