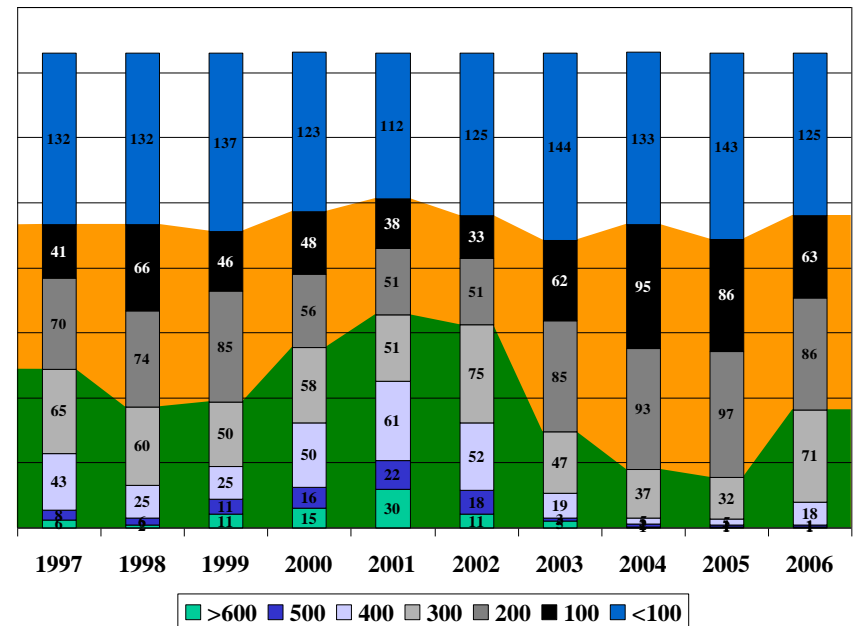


# MCAS CHERRY POINT AIR TRAFFIC CONTROL FACILITY TRAINING



4 Jan 07



## 10 YEAR STATISTICAL REPORT 1997-2006

Produced and Compiled by ATC Training Support



**TRAINEE LOSSES**

Name	Join Date	Disposition	Reason
Watkins	3 Jan 97	Admin Discharge	Theft
Lynch	14 May 97	Revocation	Unable to Qualify
Elvir	6 Jun 97	Medical	Headaches
Quetel	12 Jun 97	Revocation	Unable to Qualify
Perry	23 Jun 97	Medical	
Wallace	28 Jul 97	Revocation	Unable to Qualify
Hopkins	4 Aug 97	Suicide	
Donald	26 Aug 97	Admin Discharge	Weight
Young	8 Oct 97	Admin Discharge	Weight
Melville	5 Jan 98	Admin Discharge	
Makoyo	12 Jan 98	Admin Discharge	Disciplinary
Whitfield	8 May 98	Medical	Psychological
McIntyre	22 Jun 98	Medical	Psychological
Espling	26 Jun 98	Admin Discharge	Alcohol
Hollingshead	8 Mar 99	Bad Conduct Discharge	Theft
Shepler	15 Apr 99	Medical	Dyslexia
Davis	26 Apr 99	Admin Discharge	
Boggs	10 Feb 00	Admin Discharge	Theft
Bodner	14 Mar 00	Medical	
Hudson	30 May 00	Medical	
Collier	29 Nov 00	Medical	Psychological
Collins	21 May 01	Suicide	
Fortugno	24 Sep 01	Admin Discharge	Desertion
Padron	24 Jan 02	Revocation	Unable to Qualify
Kovalkevich	9 Apr 02	Revocation	Unable to Qualify
Booth	17 Apr 02	Medical	Headaches
Bullard	30 Aug 02	Revocation	Disciplinary
Mullins	30 Dec 02	Revocation	Unable to Qualify
Cooper	26 Mar 03	Admin Discharge	UA, Drugs
Baas	2 Jun 03	Admin Discharge	UA, Drugs
Walsh	9 Jul 03	Medical	Eye Injury
Denton	6 Oct 03	Admin Discharge	UA, Drugs
French	27 Oct 03	Medical	Alcohol
Segersin	8 Dec 03	Revocation	Anxiety
McDougall	24 Feb 04	Revocation	Alcohol
Mead	29 Nov 04	Revocation	Unable to Qualify
Smith	4 Apr 05	Revocation	Unable to Qualify
Razumovsky	17 Jun 05	Revocation	Unable to Qualify
Polito	11 Jul 05	Revocation	Unable to Qualify
Doyle	12 Dec 05	Revocation	Drugs
Moya	12 Dec 05	Revocation	Unable to Qualify
Ivester	11 Jan 06	Revocation	Unable to Qualify
Haas	6 Mar 06	Revocation	Unable to Qualify

**Facility Management**

ATC Facility Officer	Maj C. M. Harris IV
NCO In Charge	MSgt J. P. Sizemore
Training Chief	GySgt J. R. Roppo
Radar Chief	SSgt J. L. Zobel
Tower Chief	GySgt D. E. Linkenhoger
Training Support Specialist	Mr. J. G. Hendrickson
Facility Watch Supervisors	Mr. R. S. Clay Mr. J. S. Knipple Mr. D. J. Nowak

### ABBREVIATIONS

AE	Approach East
AN	Approach North (New Sector)
AR	Arrival Control
AW	Approach West
Assoc	Associate Positions for Local, Approach & Arrival
DC	Departure Control (No longer used)
EA	East Approach Associate
FC	Radar Final Control
FR	Radar Flight Data
FT	Tower Flight Data
GC	Ground Control
LA	Local Control Associate
LC	Local Control
OJF	On-the-Job Familiarization
OJT	On-the-Job Training
RA	Arrival Associate
RC	Radar Containment (No longer used)
WA	West Approach Associate

### TOP OJT INSTRUCTOR HOURS

2000	Jason D. Woodin	466.38
2001	Jason D. Woodin	330.97
2002	John H. Hough	378.38
2003	Jason D. Woodin	446.13
2004	Karen L. Geddings	452.55
2005	Karen L. Geddings	607.60
2006	Timothy R. Klinger	561.83

### TRAINER OF THE YEAR

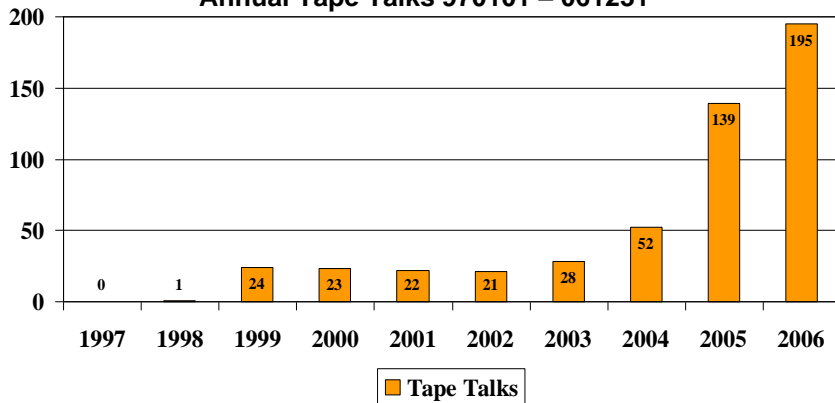
2002	Jason D. Woodin
2003	Terry P. Tolster
2004	Karen L. Geddings
2005	Timothy L. Henry



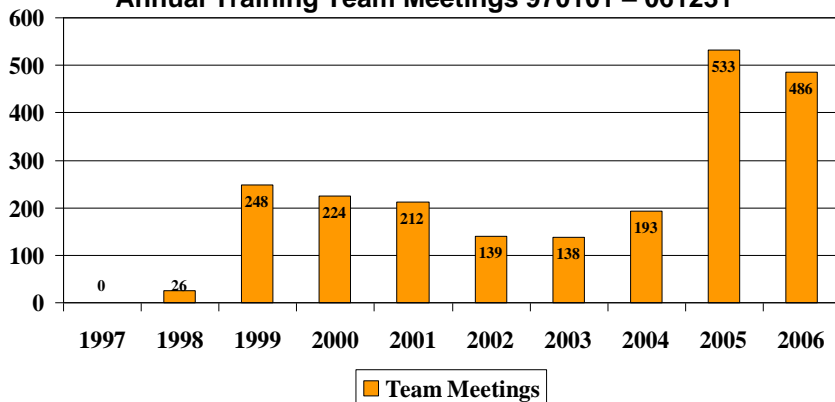
### NUMBER OF TRAINEES FROM SCHOOL HOUSE

Year	MOS	REVO	MEDICAL	ADMIN	SUICIDE	TOTAL
1997	10	3	2	3	1	19
1998	14	0	2	3	0	19
1999	28	0	1	2	0	31
2000	12	0	3	1	0	16
2001	13	0	0	1	1	15
2002	21	4	1	0	0	26
2003	23	1	2	3	0	29
2004	18	1	0	0	0	19
2005	15	4	2	1	0	22
2006	23	2	1	0	0	26
<b>Tot</b>	<b>177</b>	<b>15</b>	<b>14</b>	<b>14</b>	<b>2</b>	<b>222</b>

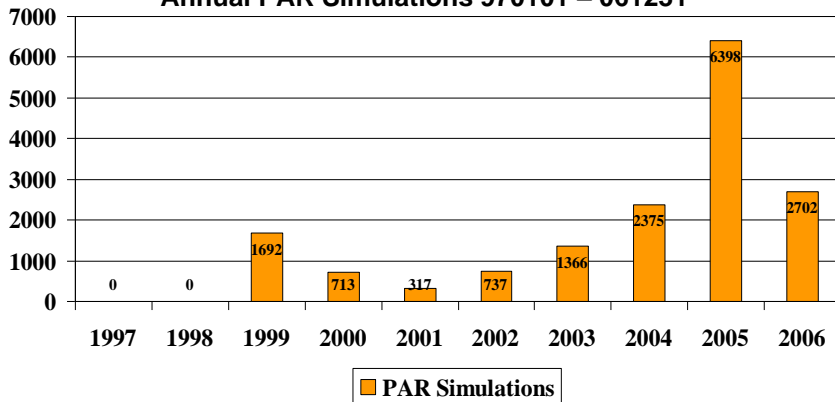
**Annual Tape Talks 970101 – 061231**



**Annual Training Team Meetings 970101 – 061231**



**Annual PAR Simulations 970101 – 061231**



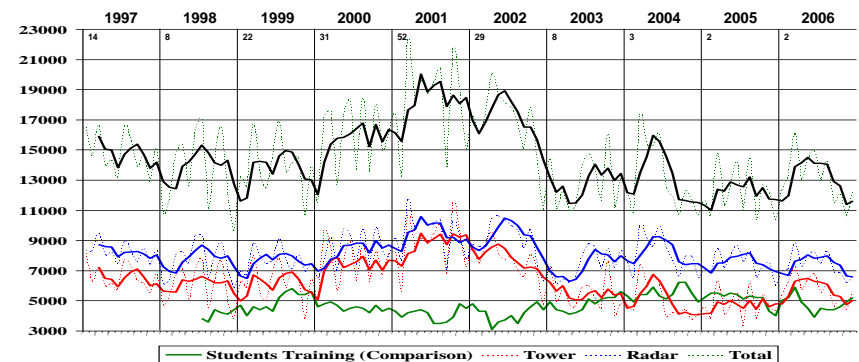
**RADAR APPROACHES**

Year	Total	Month Avg	OJT	Quals
1997	8,970	748	Not Available	17
1998	7,987	666	3,266	22
1999	7,983	665	4,033	25
2000	8,088	674	3,724	24
2001	9,113	759	3,215	22
2002	7,922	660	3,129	30
2003	6,986	582	3,643	27
2004	7,294	608	3,784	33
2005	6,762	564	3,060	24
2006	7,514	626	3,912	30

**FACILITY OPERATIONS COUNT**

Year	TOWER	RADAR	TOTAL	GCA's
1997	79,094	98,693	177,787	8,970
1998	70,944	91,153	162,097	7,987
1999	77,224	91,710	168,934	7,983
2000	90,283	99,744	190,027	8,088
2001	105,442	113,300	218,742	9,113
2002	91,043	108,689	199,732	7,922
2003	65,220	88,829	154,049	6,986
2004	59,827	96,800	156,627	7,294
2005	56,603	89,400	146,003	6,762
2006	68,926	88,640	157,566	7,514

**MCAS CHERRY POINT  
AIR TRAFFIC ACTIVITY HISTORY**



**NUMBER OF QUALIFICATIONS**

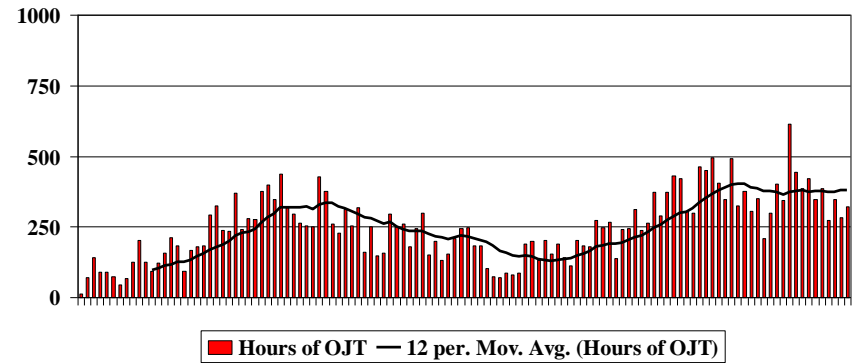
Pos	AE	AR	AW	DC/AN	FC	FR	FT	GC	LC	RC	Asst	Tot
1997	5	6	6	6	17	19	17	13	14	5	26	134
1998	5	1	5	4	22	19	17	17	13	2	20	125
1999	6	10	13	9	25	34	31	22	16	8	39	213
2000	7	4	10	5	24	27	29	26	11	5	24	172
2001	4	4	8	0	22	24	23	31	11	0	28	155
2002	4	3	5	0	30	33	32	26	15	0	27	175
2003	5	3	10	0	27	27	30	33	17	0	35	187
2004	4	3	9	3	33	33	29	26	14	0	30	184
2005	10	11	14	10	24	27	24	23	14	0	49	206
2006	9	7	15	9	30	36	30	29	16	0	47	228
<b>Tot</b>	<b>59</b>	<b>52</b>	<b>95</b>	<b>46</b>	<b>254</b>	<b>279</b>	<b>262</b>	<b>246</b>	<b>141</b>	<b>20</b>	<b>325</b>	<b>1,779</b>

**AVERAGE OJT HOURS FOR QUALIFICATION**

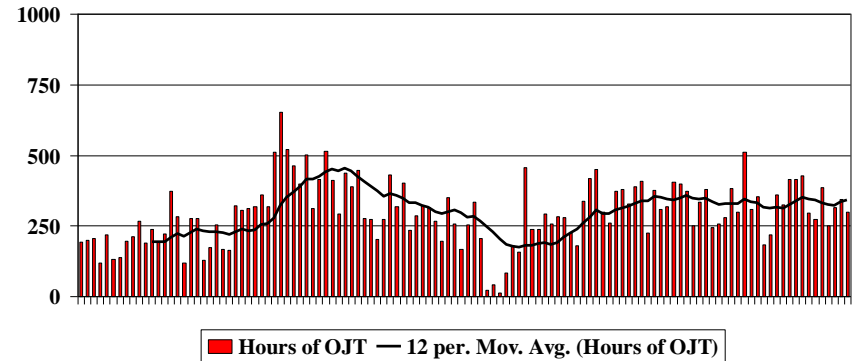
Pos	AE	AR	AW	FC	FR	FT	GC	LC
1997			219.6	153	58.2	82.8	102.6	263.3
1998			247.0	222	72.1	92.9	91.4	177.9
1999	223.4		231.7	157	56.8	44.1	62.7	141.9
2000	187.6	94.1	193.2	161	49.5	70.4	62.8	124.1
2001	198.1	73.9	197.3	176	44.7	45.3	54.9	112.6
2002	198.1	77.4	198.2	133	34.7	41.3	60.7	100.8
2003	200.0	89.8	174.5	152	52.5	51.4	56.5	108.5
2004	208.3	103.2	176.2	157	52.0	58.8	67.6	123.5
2005	247.5	128.1	251.0	159	58.9	55.4	73.2	139.5
2006	258.7	131.0	203.9	142	27.4	61.3	72.5	118.8



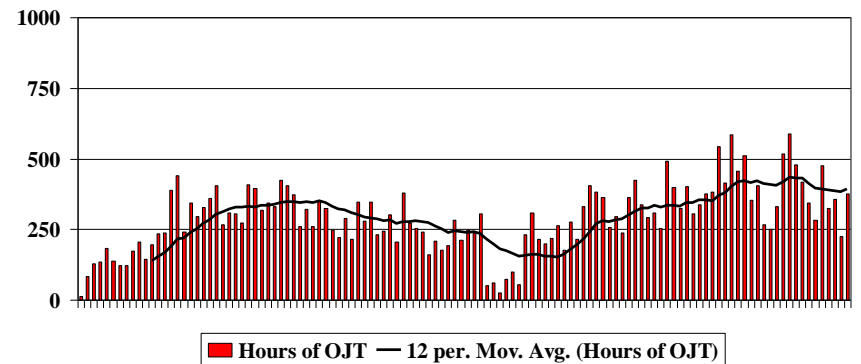
**Crew 1 Monthly OJT Hours 970101 – 061231**



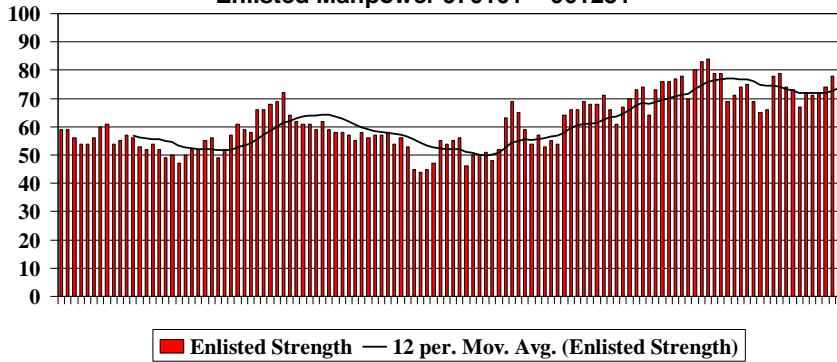
**Crew 2 Monthly OJT Hours 970101 – 061231**



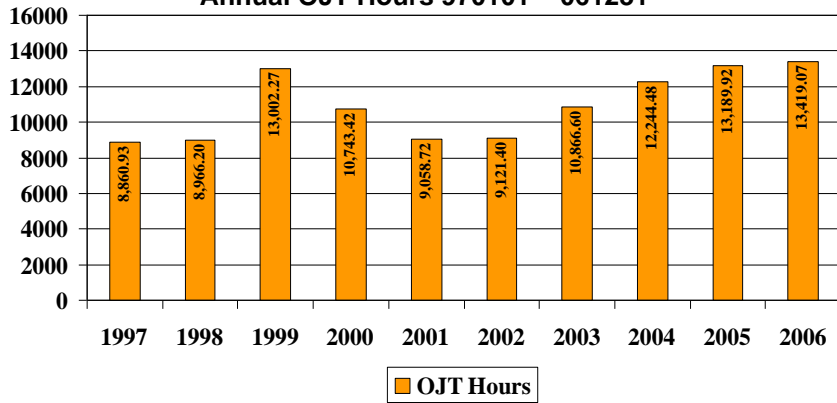
**Crew 3 Monthly OJT Hours 970101 – 061231**



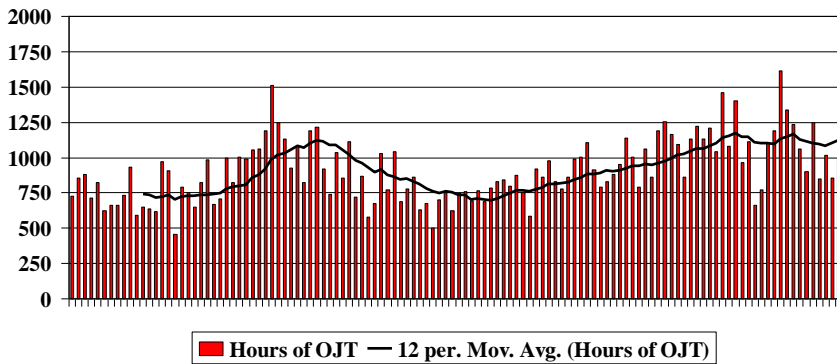
**Enlisted Manpower 970101 – 061231**



**Annual OJT Hours 970101 – 061231**



**Monthly OJT Hours 970101 – 061231**



**AVERAGE TOTAL DAYS FOR QUALIFICATION**

Pos	AE	AR	AW	FC	FR	FT	GC	LC
1997			312	137	94	89	161	360
1998			357	238	93	112	182	391
1999	318		315	88	59	67	101	264
2000	276	224	271	114	52	109	125	210
2001	294	201	229	107	51	64	109	233
2002	294	218	247	96	39	65	126	220
2003	289	252	243	100	53	78	134	194
2004	286	308	254	144	65	98	142	242
2005	264	231	233	101	62	92	119	217
2006	248	215	236	73	30	71	94	156

**NUMBER OF MOS DESIGNATIONS**

	7253	7257 R	7257 T	7252	7253	7254	Tot
1998	11			6		1	18
1999	20	4	12	8		9	53
2000	20	20	9	9		12	70
2001	13	13	8	10		7	51
2002	20	20	11	13		4	68
2003	23	23	11	9		10	76
2004	2	24	16	9	2	9	62
2005		17	10	12	13	16	68
2006		20	15	12	12	13	72
<b>Tot</b>	<b>109</b>	<b>141</b>	<b>92</b>	<b>88</b>	<b>27</b>	<b>81</b>	<b>538</b>



TRAINING HOURS AND APPROACHES											
	1997	1998	1999	2000	2001	2002	2003	2004	2005	2006	Total
Hours for OJT	8,860.93	8,966.20	13,002.27	10,743.42	9,058.72	9,121.40	10,866.60	12,244.48	13,189.92	13,419.07	109,473.01
Hours for OJF	60.83	394.60	1,362.13	1,766.10	786.57	1,259.60	1,091.40	736.62	1,929.47	1,396.62	10,783.94
Hours for Skill Checks	23.70	562.20	1,161.83	1,188.30	901.35	1,001.48	928.00	902.68	1,039.50	891.43	8,600.47
Hours for Simulators			570.60	287.95	89.92	232.50	324.02	493.37	897.05	559.15	3,454.56
Hours for Proficiency Classes	981.00	2,038.20	1,756.50	2,372.50	754.35	791.02	846.45	1,301.50	813.66	705.37	12,360.55
Hours for Team Meetings		38.64	295.16	208.66	338.00	192.68	180.00	254.28	717.48	720.48	2,945.38
Hours for Nonradar		106.24	1,402.34	1,011.00	1,126.24	732.50	1,249.16	833.67	437.48	655.13	7,553.76
Hours for Simulation (Stacks)		42.84	652.70	1,736.68	1,606.73	1,727.05	1,357.91	1,465.44	1,871.67	1,616.09	12,077.11
Hours for Lessons/Tests		1,247.46	5,082.26	4,408.20	2,650.94	3,860.46	3,047.66	2,648.80	2,521.64	2,901.20	28,368.62
Hours for OJTI Course			587.50	676.00	264.00	304.50	246.00	245.00	388.00	410.50	3,121.50
Hours for Self Study		175.62	502.33	582.35	264.37	448.25	377.18	634.62	337.78	759.65	4,082.15
Total Program Hours	9,926.46	13,572.00	26,375.62	24,981.16	17,841.19	19,671.44	20,514.38	21,760.46	24,143.65	24,034.69	202,821.05
Number of Positions Being Trained	224	184	275	256	243	270	279	322	309	293	1,742
Number of Trainees	72	73	98	77	77	87	92	105	106	100	341
Number of Position Qualifications	134	125	213	172	155	175	187	184	206	228	1,779
Number of MOS Designations	13	19	53	70	51	68	76	62	68	72	552
GCA's Conducted by Specialists		4,333	3,428	3,954	5,417	4,168	2,933	3,008	3,298	3,209	33,748
GCA's for OJT		3,226	4,033	3,724	3,215	3,129	3,643	3,784	3,060	3,912	31,726
GCA's for Skill Checks		428	522	410	481	625	410	502	404	393	4,175
Total GCA's	8,970	7,987	7,983	8,088	9,113	7,922	6,986	7,294	6,762	7,514	78,619
Simulated GCA's			1,682	382	297	737	1,356	2,375	6,398	2,702	15,929
OJT Hours by Position											
Approach East (AE/EA)	684.18	869.53	1,509.02	1,029.82	1,350.50	1,172.25	1,629.47	1,777.43	2,054.03	1,732.85	13,809.08
Approach North (AN)	NA	NA	NA	NA	NA	NA	NA	99.15	59.63	27.63	186.41
Arrival Control/Hand Off (AR/RA)	763.24	161.81	746.80	329.03	563.10	465.15	549.00	800.47	1,451.83	854.20	6,684.63
Approach West/Assistant (AW/WA)	851.34	1,555.85	2,318.90	1,770.63	1,631.97	1,492.94	1,940.47	2,002.33	2,276.70	2,400.76	18,241.89
Final Control (FC)	982.37	1,378.63	1,706.40	1,303.92	836.12	1,010.33	1,427.28	1,740.43	1,382.17	1,995.65	13,763.30
Radar Flight Data (FR)	1,071.67	1,203.95	1,585.45	1,186.03	1,041.10	1,106.93	1,148.97	1,281.12	1,182.62	1,382.62	12,190.46
Tower Flight Data (FT)	1,424.80	1,099.67	1,552.00	1,447.68	979.28	1,248.25	1,357.57	1,413.28	1,417.12	1,595.00	13,534.65
Ground Control (GC)	848.42	864.17	1,434.80	1,585.80	1,263.38	1,295.43	1,424.85	1,383.93	1,509.55	1,525.82	13,136.15
Local Control/Assistant (LC/LA)	1,628.23	1,065.77	1,586.76	1,563.72	1,393.26	1,330.11	1,389.00	1,746.34	1,856.27	1,904.53	15,463.99
Vehicle Operator Course											
Number of Courses Given				63	50	83	87	61	53	58	455
Number of Attendees				436	440	555	618	513	372	753	3,687
Hours of Instruction				31.50	25.00	41.50	43.50	30.50	26.50	29.00	227.50