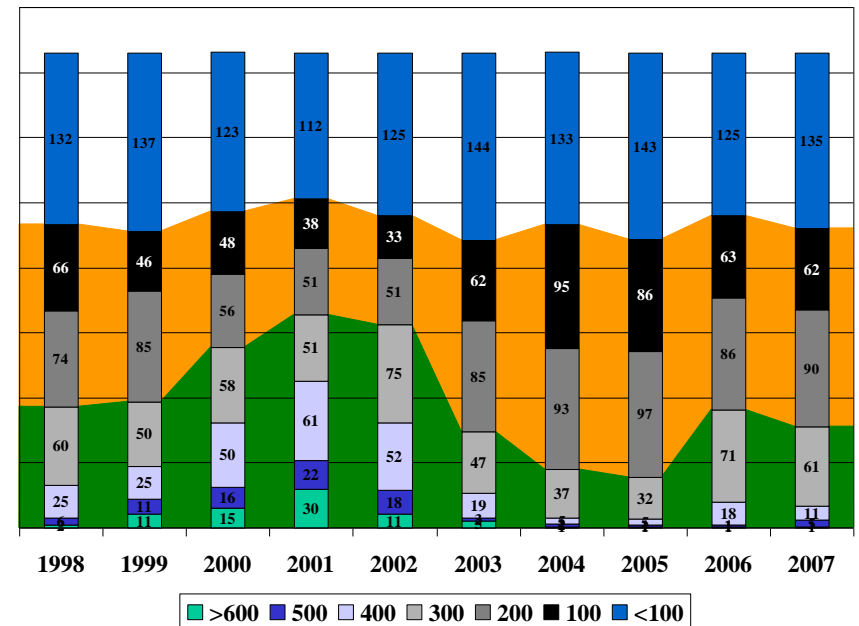


MCAS CHERRY POINT AIR TRAFFIC CONTROL FACILITY TRAINING



7 Jan 08



10 YEAR STATISTICAL REPORT 1998-2007

Produced and Compiled by ATC Training Support

TRAINEE LOSSES

Name	Join Date	Disposition	Reason
Melville	5 Jan 98	Admin Discharge	
Makoyo	12 Jan 98	Admin Discharge	Disciplinary
Whitfield	8 May 98	Medical	Psychological
McIntyre	22 Jun 98	Medical	Psychological
Espling	26 Jun 98	Admin Discharge	Alcohol
Hollingshead	8 Mar 99	Bad Conduct Discharge	Theft
Shepler	15 Apr 99	Medical	Dyslexia
Davis	26 Apr 99	Admin Discharge	
Boggs	10 Feb 00	Admin Discharge	Theft
Bodner	14 Mar 00	Medical	
Hudson	30 May 00	Medical	
Collier	29 Nov 00	Medical	Psychological
Collins	21 May 01	Suicide	
Fortugno	24 Sep 01	Admin Discharge	Desertion
Padron	24 Jan 02	Revocation	Unable to Qualify
Kovalkevich	9 Apr 02	Revocation	Unable to Qualify
Booth	17 Apr 02	Medical	Headaches
Bullard	30 Aug 02	Revocation	Disciplinary
Mullins	30 Dec 02	Revocation	Unable to Qualify
Cooper	26 Mar 03	Admin Discharge	UA, Drugs
Baas	2 Jun 03	Admin Discharge	UA, Drugs
Walsh	9 Jul 03	Medical	Eye Injury
Denton	6 Oct 03	Admin Discharge	UA, Drugs
French	27 Oct 03	Medical	Alcohol
Segersin	8 Dec 03	Revocation	Anxiety
McDougall	24 Feb 04	Revocation	Alcohol
Mead	29 Nov 04	Revocation	Unable to Qualify
Smith	4 Apr 05	Revocation	Unable to Qualify
Razumovsky	17 Jun 05	Revocation	Unable to Qualify
Polito	11 Jul 05	Revocation	Unable to Qualify
Doyle	12 Dec 05	Revocation	Drugs
Moya	12 Dec 05	Revocation	Unable to Qualify
Ivester	11 Jan 06	Revocation	Unable to Qualify
Haas	6 Mar 06	Revocation	Unable to Qualify
Cranfill	31 Jul 06	Revocation	Memory
Quiles	15 May 07	Revocation	Sleep Disorder
Miller	13 Jul 07	Revocation	Unable to Qualify

Facility Management

ATC Facility Officer	Capt R. T. Beeson
NCO In Charge	MSgt E. Minsk
Training Chief	GySgt D. J. Spillman
Radar Chief	SSgt J. L. Zobel
Tower Chief	Sgt J. P. Largent
Training Support Specialist	Mr. J. G. Hendrickson
Facility Watch Supervisors	Mr. R. S. Clay Mr. J. S. Knipple Mr. D. J. Nowak

ABBREVIATIONS

AE	Approach East
AN	Approach North (New Sector)
AR	Arrival Control
AW	Approach West
Assoc	Associate Positions for Local, Approach & Arrival
DC	Departure Control (No longer used)
EA	East Approach Associate
FC	Radar Final Control
FR	Radar Flight Data
FT	Tower Flight Data
GC	Ground Control
LA	Local Control Associate
LC	Local Control
OJF	On-the-Job Familiarization
OJT	On-the-Job Training
RA	Arrival Associate
RC	Radar Containment (No longer used)
WA	West Approach Associate

TOP OJT INSTRUCTOR HOURS

1998	John M. Holbrook	393.80
1999	Jason D. Woodin	492.92
2000	Jason D. Woodin	466.38
2001	Jason D. Woodin	330.97
2002	John H. Hough	378.38
2003	Jason D. Woodin	446.13
2004	Karen L. Geddings	452.55
2005	Karen L. Geddings	607.60
2006	Timothy R. Klinger	561.83
2007	Timothy R. Klinger	414.78

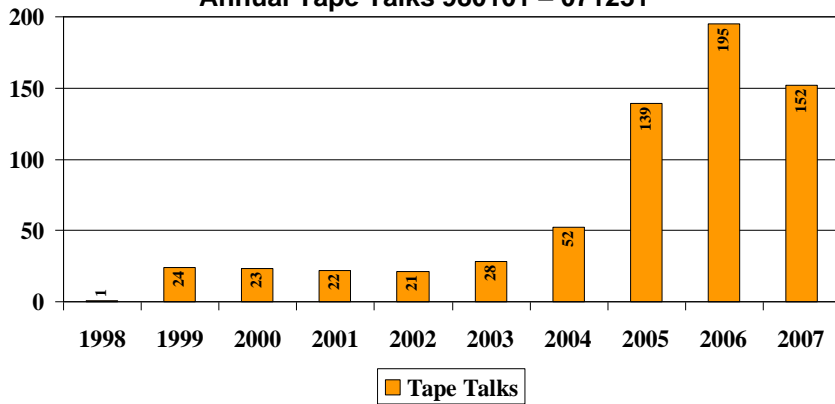
TRAINER OF THE YEAR

2002	Jason D. Woodin
2003	Terry P. Tolster
2004	Karen L. Geddings
2005	Timothy L. Henry
2006	Timothy R. Klinger

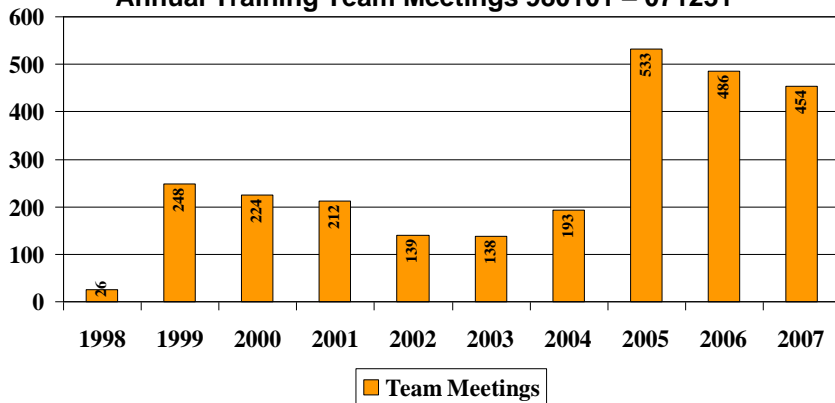
NUMBER OF TRAINEES FROM SCHOOL HOUSE

Year	MOS	REVO	MEDICAL	ADMIN	SUICIDE	TOTAL
1998	14	0	2	3	0	19
1999	28	0	1	2	0	31
2000	12	0	3	1	0	16
2001	13	0	0	1	1	15
2002	21	4	1	0	0	26
2003	23	1	2	3	0	29
2004	18	1	0	0	0	19
2005	15	4	2	1	0	22
2006	23	2	1	0	0	26
2007	15	1	1	0	0	17
Tot	182	13	13	11	1	220

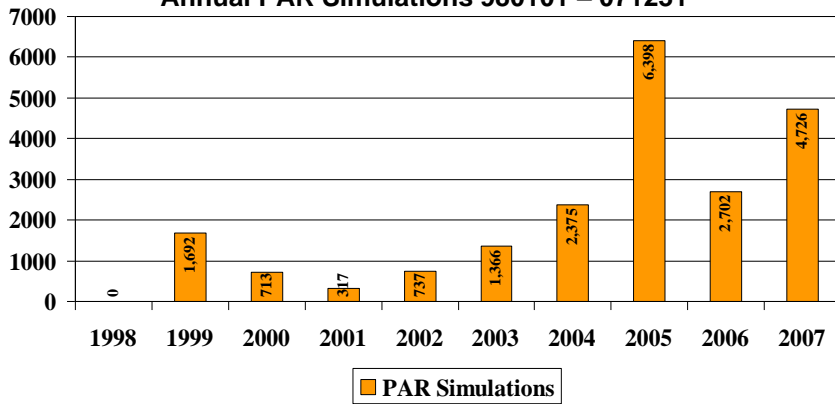
Annual Tape Talks 980101 – 071231



Annual Training Team Meetings 980101 – 071231



Annual PAR Simulations 980101 – 071231



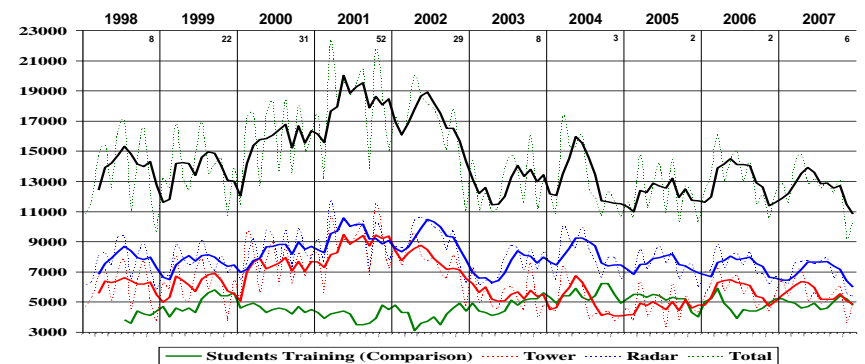
RADAR APPROACHES

Year	Total	Month Avg	OJT	Quals
1998	7,987	666	3,266	22
1999	7,983	665	4,033	25
2000	8,088	674	3,724	24
2001	9,113	759	3,215	22
2002	7,922	660	3,129	30
2003	6,986	582	3,643	27
2004	7,294	608	3,784	33
2005	6,762	564	3,060	24
2006	7,514	626	3,912	30
2007	5,912	493	2,726	24

FACILITY OPERATIONS COUNT

Year	TOWER	RADAR	TOTAL	GCA's
1998	70,944	91,153	162,097	7,987
1999	77,224	91,710	168,934	7,983
2000	90,283	99,744	190,027	8,088
2001	105,442	113,300	218,742	9,113
2002	91,043	108,689	199,732	7,922
2003	65,220	88,829	154,049	6,986
2004	59,827	96,800	156,627	7,294
2005	56,603	89,400	146,003	6,762
2006	68,926	88,640	157,566	7,514
2007	66,187	83,245	149,432	5,912

**MCAS CHERRY POINT
AIR TRAFFIC ACTIVITY HISTORY**



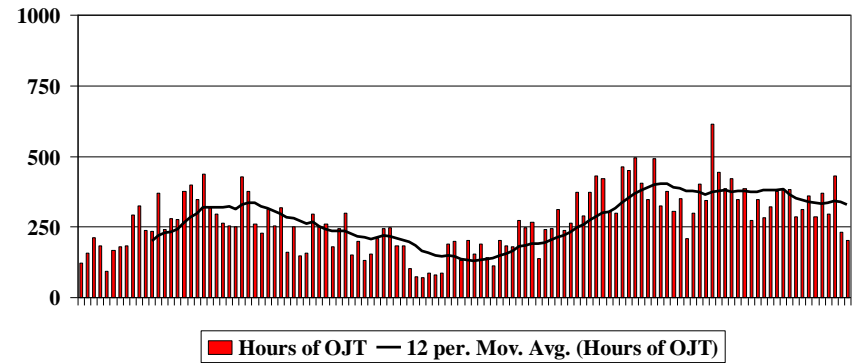
NUMBER OF QUALIFICATIONS

Pos	AE	AR	AW	DC/AN	FC	FR	FT	GC	LC	RC	Asst	Tot
1998	5	1	5	4	22	19	17	17	13	2	20	125
1999	6	10	13	9	25	34	31	22	16	8	39	213
2000	7	4	10	5	24	27	29	26	11	5	24	172
2001	4	4	8	0	22	24	23	31	11	0	28	155
2002	4	3	5	0	30	33	32	26	15	0	27	175
2003	5	3	10	0	27	27	30	33	17	0	35	187
2004	4	3	9	3	33	33	29	26	14	0	30	184
2005	10	11	14	10	24	27	24	23	14	0	49	206
2006	9	7	15	9	30	36	30	29	16	0	47	228
2007	4	2	8	4	24	23	26	23	15	0	29	158
Tot	58	48	97	44	261	283	271	256	142	15	328	1,803

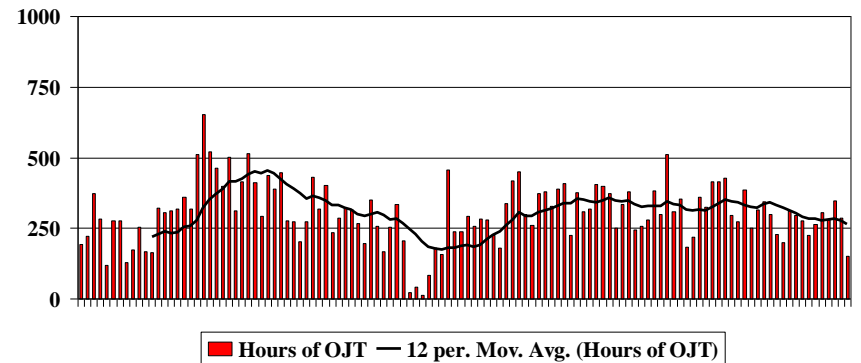
AVERAGE OJT HOURS FOR QUALIFICATION

Pos	AE	AR	AW	FC	FR	FT	GC	LC
1998			247.0	222	72.1	92.9	91.4	177.9
1999	223.4		231.7	157	56.8	44.1	62.7	141.9
2000	187.6	94.1	193.2	161	49.5	70.4	62.8	124.1
2001	198.1	73.9	197.3	176	44.7	45.3	54.9	112.6
2002	198.1	77.4	198.2	133	34.7	41.3	60.7	100.8
2003	200.0	89.8	174.5	152	52.5	51.4	56.5	108.5
2004	208.3	103.2	176.2	157	52.0	58.8	67.6	123.5
2005	247.5	128.1	251.0	159	58.9	55.4	73.2	139.5
2006	258.7	131.0	203.9	142	27.4	61.3	72.5	118.8
2007	239.9	130.6	193.8	179	49.0	77.2	60.2	86.1

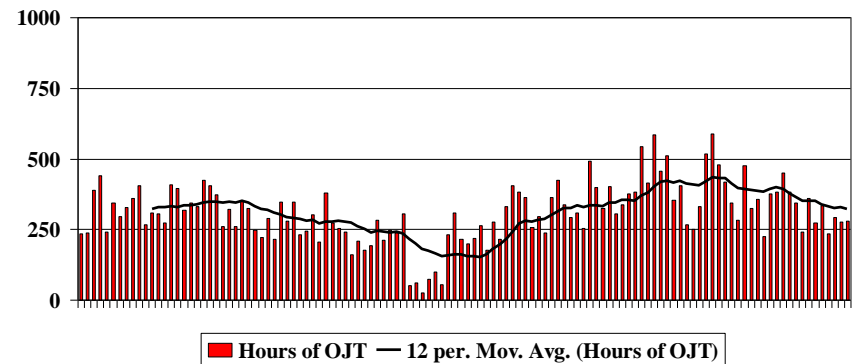
Crew 1 Monthly OJT Hours 980101 – 071231



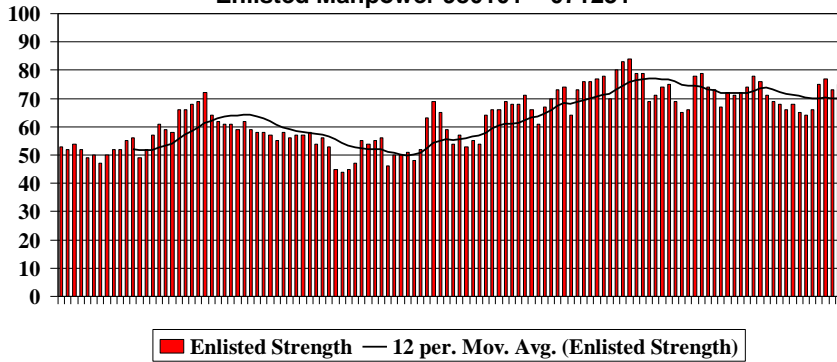
Crew 2 Monthly OJT Hours 970101 – 071231



Crew 3 Monthly OJT Hours 970101 – 071231



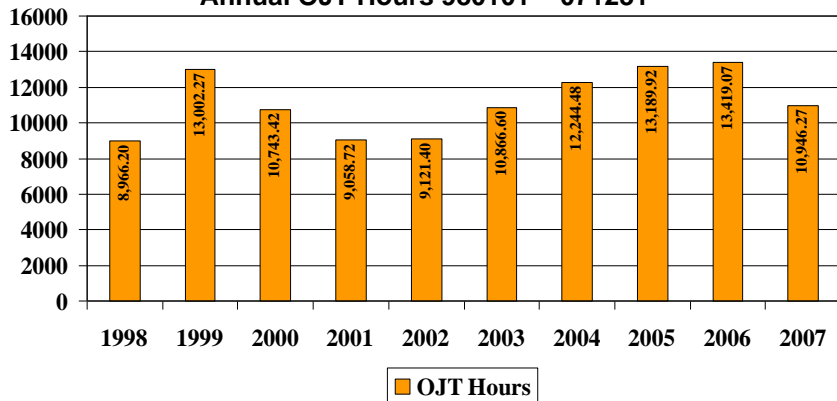
Enlisted Manpower 980101 – 071231



AVERAGE TOTAL DAYS FOR QUALIFICATION

Pos	AE	AR	AW	FC	FR	FT	GC	LC
1998			357	238	93	112	182	391
1999	318		315	88	59	67	101	264
2000	276	224	271	114	52	109	125	210
2001	294	201	229	107	51	64	109	233
2002	294	218	247	96	39	65	126	220
2003	289	252	243	100	53	78	134	194
2004	286	308	254	144	65	98	142	242
2005	264	231	233	101	62	92	119	217
2006	248	215	236	73	47	80	94	156
2007	279	216	239	114	59	88	119	153

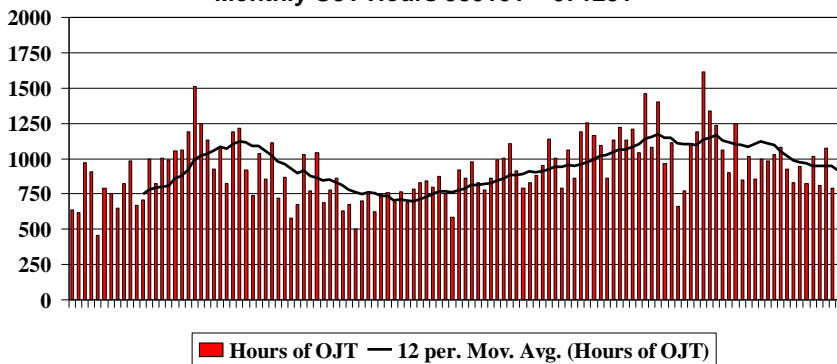
Annual OJT Hours 980101 – 071231



NUMBER OF MOS DESIGNATIONS

	7253	7257 R	7257 T	7252	7253	7254	Tot
1998	11			6		1	18
1999	20	4	12	8		9	53
2000	20	20	9	9		12	70
2001	13	13	8	10		7	51
2002	20	20	11	13		4	68
2003	23	23	11	9		10	76
2004	2	24	16	9	2	9	62
2005		17	10	12	13	16	68
2006		20	15	12	12	13	72
2007		14	14	13	8	10	59
Tot	109	155	106	101	35	91	597

Monthly OJT Hours 980101 – 071231



TRAINING HOURS AND APPROACHES											
	1998	1999	2000	2001	2002	2003	2004	2005	2006	2007	Total
Hours for OJT	8,966.20	13,002.27	10,743.42	9,058.72	9,121.40	10,866.60	12,244.48	13,189.92	13,419.07	10,946.27	111,558.35
Hours for OJF	394.60	1,362.13	1,766.10	786.57	1,259.60	1,091.40	736.62	1,929.47	1,396.62	1,256.50	11,979.61
Hours for Skill Checks	562.20	1,161.83	1,188.30	901.35	1,001.48	928.00	902.68	1,039.50	891.43	761.45	9,338.22
Hours for Simulators		570.60	287.95	89.92	232.50	324.02	493.37	897.05	559.15	1,274.25	4,728.81
Hours for Proficiency Classes	2,038.20	1,756.50	2,372.50	754.35	791.02	846.45	1,301.50	813.66	705.37	729.50	12,109.05
Hours for Team Meetings	38.64	295.16	208.66	338.00	192.68	180.00	254.28	717.48	720.48	844.20	3,789.58
Hours for Nonradar	106.24	1,402.34	1,011.00	1,126.24	732.50	1,249.16	833.67	437.48	655.13	571.67	8,125.43
Hours for Simulation (Stacks)	42.84	652.70	1,736.68	1,606.73	1,727.05	1,357.91	1,465.44	1,871.67	1,616.09	1,491.91	13,569.02
Hours for Lessons/Tests	1,247.46	5,082.26	4,408.20	2,650.94	3,860.46	3,047.66	2,648.80	2,521.64	2,901.20	3,590.60	31,959.22
Hours for OJTI Course		587.50	676.00	264.00	304.50	246.00	245.00	388.00	410.50	316.00	3,437.50
Hours for Self Study	175.62	502.33	582.35	264.37	448.25	377.18	634.62	337.78	759.65	1,830.15	5,912.30
Total Program Hours	13,572.00	26,375.62	24,981.16	17,841.19	19,671.44	20,514.38	21,760.46	24,143.65	24,034.69	23,612.50	216,507.09
Number of Positions Being Trained	184	275	256	243	270	279	322	309	293	245	1,742
Number of Trainees	73	98	77	77	87	92	105	106	100	83	341
Number of Position Qualifications	125	213	172	155	175	187	184	206	228	158	1,779
Number of MOS Designations	18	53	70	51	68	76	62	68	72	59	597
GCA's Conducted by Specialists	4,333	3,428	3,954	5,417	4,168	2,933	3,008	3,298	3,209	2,948	36,696
GCA's for OJT	3,226	4,033	3,724	3,215	3,129	3,643	3,784	3,060	3,912	2,726	34,452
GCA's for Skill Checks	428	522	410	481	625	410	502	404	393	238	4,413
Total GCA's	7,987	7,983	8,088	9,113	7,922	6,986	7,294	6,762	7,514	5,912	75,561
Simulated GCA's		1,682	382	297	737	1,356	2,375	6,398	2,702	4,726	20,655
OJT Hours by Position											
Approach East (AE/EA)	869.53	1,509.02	1,029.82	1,350.50	1,172.25	1,629.47	1,777.43	2,054.03	1,732.85	1,225.78	14,350.68
Approach North (AN)	NA	NA	NA	NA	NA	NA	99.15	59.63	27.63	5.20	191.61
Arrival Control/Hand Off (AR/RA)	161.81	746.80	329.03	563.10	465.15	549.00	800.47	1,451.83	854.20	758.28	6,679.67
Approach West/Assistant (AW/WA)	1,555.85	2,318.90	1,770.63	1,631.97	1,492.94	1,940.47	2,002.33	2,276.70	2,400.76	1,996.58	19,387.13
Final Control (FC)	1,378.63	1,706.40	1,303.92	836.12	1,010.33	1,427.28	1,740.43	1,382.17	1,995.65	1,622.02	14,402.95
Radar Flight Data (FR)	1,203.95	1,585.45	1,186.03	1,041.10	1,106.93	1,148.97	1,281.12	1,182.62	1,382.62	1,237.75	12,356.54
Tower Flight Data (FT)	1,099.67	1,552.00	1,447.68	979.28	1,248.25	1,357.57	1,413.28	1,417.12	1,595.00	1,364.15	13,474.00
Ground Control (GC)	864.17	1,434.80	1,585.80	1,263.38	1,295.43	1,424.85	1,383.93	1,509.55	1,525.82	1,271.00	13,558.73
Local Control/Assistant (LC/LA)	1,065.77	1,586.76	1,563.72	1,393.26	1,330.11	1,389.00	1,746.34	1,856.27	1,904.53	1,465.50	15,301.26
Vehicle Operator Course											
Number of Courses Given			63	50	83	87	61	53	58	58	513
Number of Attendees			436	440	555	618	513	372	753	556	4,243
Hours of Instruction			31.50	25.00	41.50	43.50	30.50	26.50	29.00	29.00	256.50