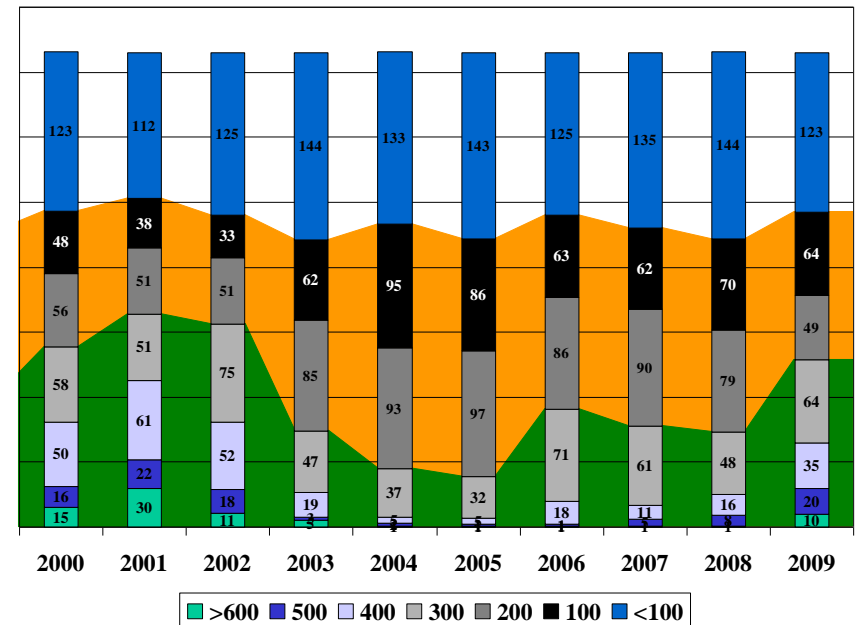


# MCAS CHERRY POINT AIR TRAFFIC CONTROL FACILITY TRAINING

**MCAS CHERRY POINT  
ATC TRAINING PROGRAM  
1 JAN 00 – 31 DEC 09**

**1,663,645 OPERATIONS**  
**110,277 HOURS OF OJT**  
**353 TRAINEES**  
**1,881 POSITION QUALIFICATIONS**  
**INCLUDING**  
**140 LOCAL CONTROL**  
**169 APPROACH CONTROL**  
**1,114 FT,GC,FC,FR**



## 10 YEAR STATISTICAL REPORT 2000-2009

9 Feb 10

Produced and Compiled by ATC Training Support



**TRAINEE LOSSES**

Name	Join Date	Disposition	Reason
Boggs	10 Feb 00	Admin Discharge	Theft
Bodner	14 Mar 00	Medical	
Hudson	30 May 00	Medical	
Collier	29 Nov 00	Medical	Psychological
Collins	21 May 01	Suicide	
Fortugno	24 Sep 01	Admin Discharge	Desertion
Padron	24 Jan 02	Revocation	Unable to Qualify
Kovalkevich	9 Apr 02	Revocation	Unable to Qualify
Booth	17 Apr 02	Medical	Headaches
Bullard	30 Aug 02	Revocation	Disciplinary
Mullins	30 Dec 02	Revocation	Unable to Qualify
Cooper	26 Mar 03	Admin Discharge	UA, Drugs
Baas	2 Jun 03	Admin Discharge	UA, Drugs
Walsh	9 Jul 03	Medical	Eye Injury
Denton	6 Oct 03	Admin Discharge	UA, Drugs
French	27 Oct 03	Medical	Alcohol
Segersin	8 Dec 03	Revocation	Anxiety
McDougall	24 Feb 04	Revocation	Alcohol
Mead	29 Nov 04	Revocation	Unable to Qualify
Smith	4 Apr 05	Revocation	Unable to Qualify
Razumovsky	17 Jun 05	Revocation	Unable to Qualify
Polito	11 Jul 05	Revocation	Unable to Qualify
Doyle	12 Dec 05	Revocation	Drugs
Moya	12 Dec 05	Revocation	Unable to Qualify
Ivester	11 Jan 06	Revocation	Unable to Qualify
Haas	6 Mar 06	Revocation	Unable to Qualify
Cranfill	31 Jul 06	Revocation	Memory
Quiles	15 May 07	Revocation	Sleep Disorder
Miller	13 Jul 07	Revocation	Unable to Qualify
Toner	20 Aug 07	Revocation	Medical
Childers	20 Feb 09	Reassignment	Unable to Qualify

**Facility Management**

ATC Facility Officer	Maj B. E. White
NCO In Charge	MSgt T. D. McMillan
Training Chief	GySgt J. Zuniga
Radar Chief	SSgt R. L. Loden
Tower Chief	GySgt P. A. Rainbow
Training Support Specialist	Mr. J. G. Hendrickson
Facility Watch Supervisors	Mr. R. S. Clay Mr. J. S. Knipple Mr. D. J. Nowak

**ABBREVIATIONS**

AE	Approach East
AN	Approach North (New Sector)
AR	Arrival Control
AW	Approach West
Assoc	Associate Positions for Local, Approach & Arrival
DC	Departure Control (No longer used)
EA	East Approach Associate
FC	Radar Final Control
FR	Radar Flight Data
FT	Tower Flight Data
GC	Ground Control
LA	Local Control Associate
LC	Local Control
OJF	On-the-Job Familiarization
OJT	On-the-Job Training
RA	Arrival Associate
RC	Radar Containment (No longer used)
WA	West Approach Associate

**TOP OJT INSTRUCTOR HOURS**

2000	Jason D. Woodin	466.38
2001	Jason D. Woodin	330.97
2002	John H. Hough	378.38
2003	Jason D. Woodin	446.13
2004	Karen L. Geddings	452.55
2005	Karen L. Geddings	607.60
2006	Timothy R. Klinger	561.83
2007	Timothy R. Klinger	414.78
2008	Jason D. Woodin	425.58
2009	Timothy R. Klinger	535.08

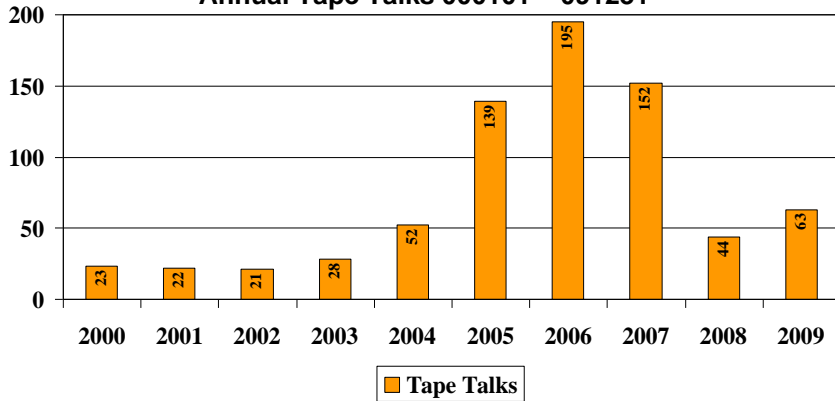
**TRAINER OF THE YEAR**

2002	Jason D. Woodin
2003	Terry P. Tolster
2004	Karen L. Geddings
2005	Timothy L. Henry
2006	Timothy R. Klinger
2007	John H. Hough
2008	Jason D. Woodin
2009	Timothy L. Henry

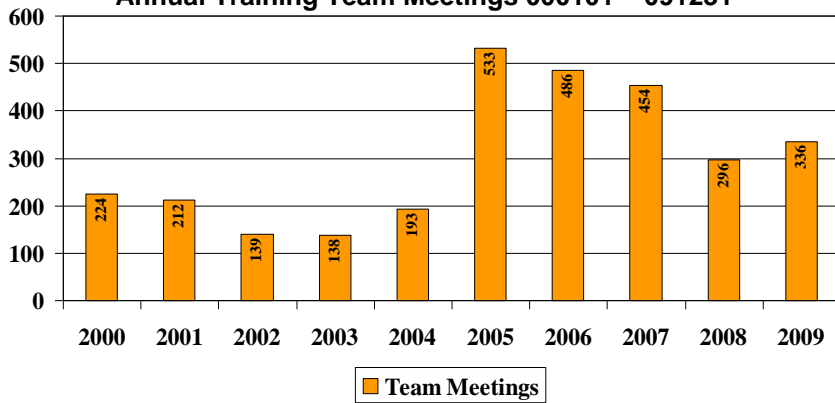
**NUMBER OF TRAINEES FROM SCHOOL HOUSE**

Year	MOS	REVO	MEDICAL	ADMIN	SUICIDE	TOTAL
2000	11	2	2	1	0	16
2001	13	0	0	1	1	15
2002	21	3	2	0	0	26
2003	23	0	3	3	0	29
2004	18	1	0	0	0	19
2005	15	4	2	1	0	22
2006	23	2	1	0	0	26
2007	14	1	2	0	0	17
2008	27	0	0	0	0	27
2009	28	0	1	0	0	29
<b>Tot</b>	<b>194</b>	<b>13</b>	<b>13</b>	<b>6</b>	<b>1</b>	<b>226</b>

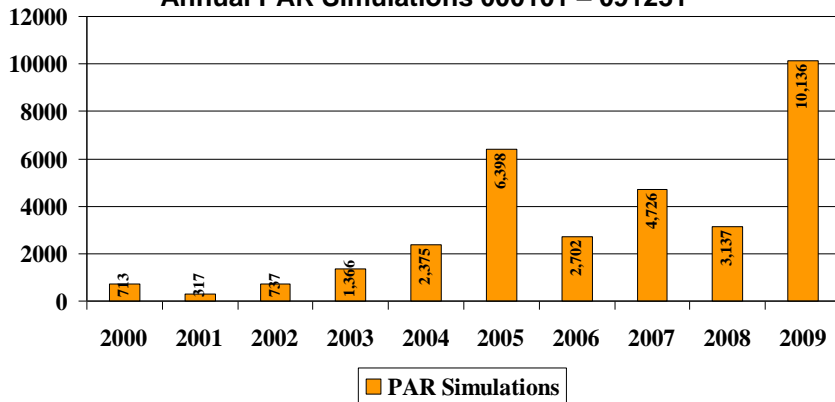
**Annual Tape Talks 000101 – 091231**



**Annual Training Team Meetings 000101 – 091231**



**Annual PAR Simulations 000101 – 091231**



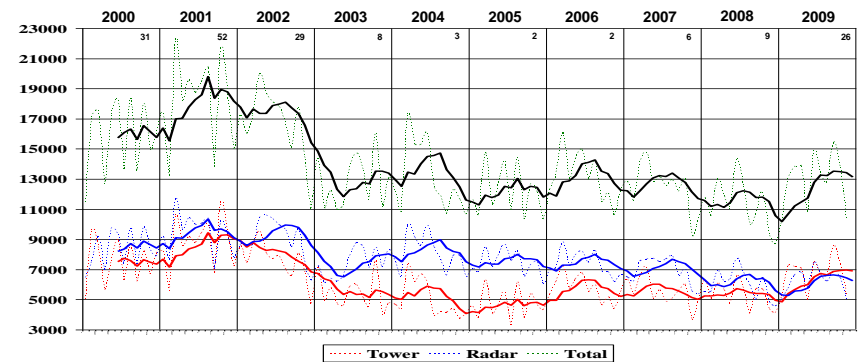
**RADAR APPROACHES**

Year	Total	Month Avg	OJT	Quals
2000	8,088	674	3,724	24
2001	9,113	759	3,215	22
2002	7,922	660	3,129	30
2003	6,986	582	3,643	27
2004	7,294	608	3,784	33
2005	6,762	564	3,060	24
2006	7,514	626	3,912	30
2007	5,912	493	2,726	24
2008	4,974	415	2,133	18
2009	6,332	528	2,977	35

**FACILITY OPERATIONS COUNT**

Year	TOWER	RADAR	TOTAL	GCA's
2000	90,283	99,744	190,027	8,088
2001	105,442	113,300	218,742	9,113
2002	91,043	108,689	199,732	7,922
2003	65,220	88,829	154,049	6,986
2004	59,827	96,800	156,627	7,294
2005	56,603	89,400	146,003	6,762
2006	68,926	88,640	157,566	7,514
2007	66,187	83,245	149,432	5,912
2008	64,015	71,955	135,970	4,974
2009	81,094	74,402	155,496	6,332

**MCAS CHERRY POINT  
AIR TRAFFIC ACTIVITY HISTORY**



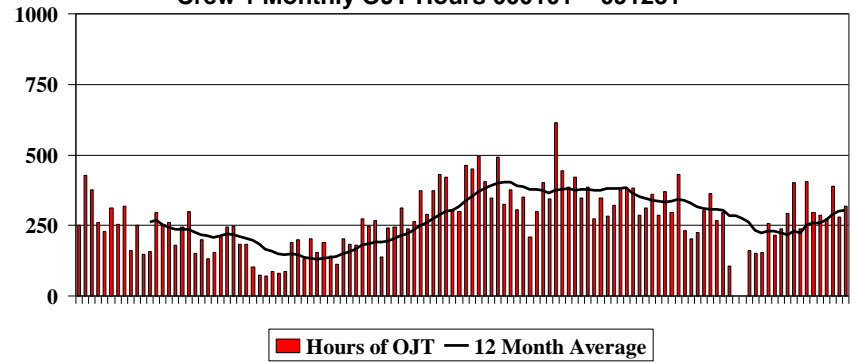
**NUMBER OF QUALIFICATIONS**

Pos	AE	AR	AW	DC/AN	FC	FR	FT	GC	LC	RC	Asst	Tot
2000	7	4	10	5	24	27	29	26	11	5	24	172
2001	4	4	8	0	22	24	23	31	11	0	28	155
2002	4	3	5	0	30	33	32	26	15	0	27	175
2003	5	3	10	0	27	27	30	33	17	0	35	187
2004	4	3	9	3	33	33	29	26	14	0	30	184
2005	10	11	14	10	24	27	24	23	14	0	49	206
2006	9	7	15	9	30	36	30	29	16	0	47	228
2007	4	2	8	4	24	23	26	23	15	0	29	158
2008	7	9	11	7	18	26	24	22	12	0	39	175
2009	7	7	18	7	35	39	34	32	15	0	47	241
<b>Tot</b>	<b>61</b>	<b>53</b>	<b>108</b>	<b>45</b>	<b>267</b>	<b>295</b>	<b>281</b>	<b>271</b>	<b>140</b>	<b>5</b>	<b>355</b>	<b>1,881</b>

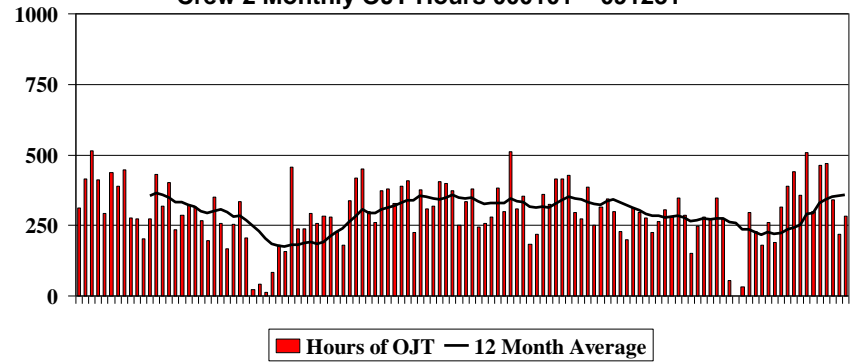
**AVERAGE OJT HOURS FOR QUALIFICATION**

Pos	AE	AR	AW	FC	FR	FT	GC	LC
2000	187.6	94.1	193.2	161	49.5	70.4	62.8	124.1
2001	198.1	73.9	197.3	176	44.7	45.3	54.9	112.6
2002	198.1	77.4	198.2	133	34.7	41.3	60.7	100.8
2003	200.0	89.8	174.5	152	52.5	51.4	56.5	108.5
2004	208.3	103.2	176.2	157	52.0	58.8	67.6	123.5
2005	247.5	128.1	251.0	159	58.9	55.4	73.2	139.5
2006	258.7	131.0	203.9	142	27.4	61.3	72.5	118.8
2007	239.9	130.6	193.8	179	49.0	77.2	60.2	86.1
2008	239.9	105.0	169.7	133	52.3	74.2	67.2	106.4
2009	202.0	61.52	104.8	88	39.0	87.6	55.8	116.8

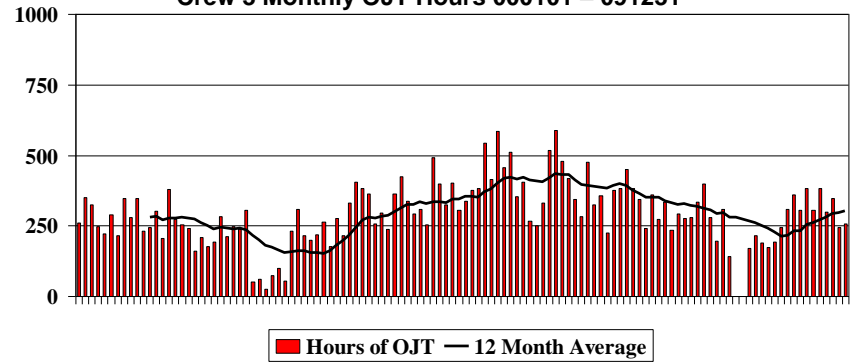
**Crew 1 Monthly OJT Hours 000101 – 091231**



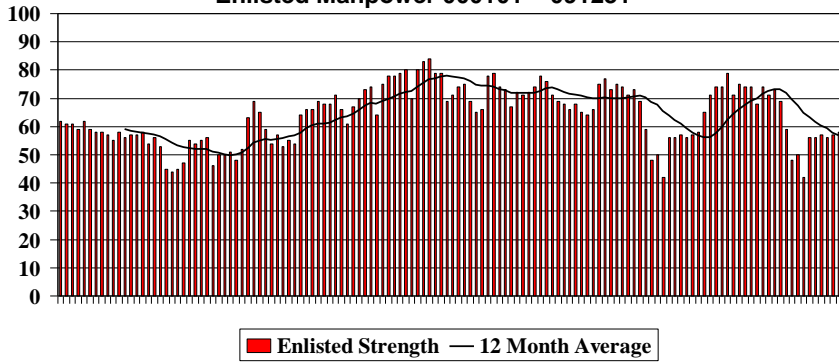
**Crew 2 Monthly OJT Hours 000101 – 091231**



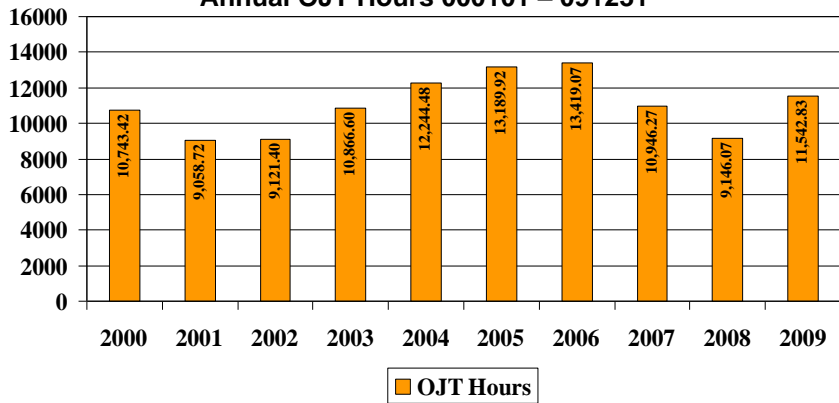
**Crew 3 Monthly OJT Hours 000101 – 091231**



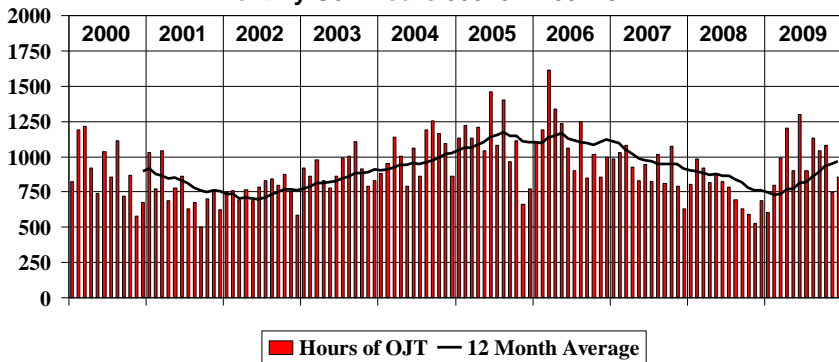
**Enlisted Manpower 000101 – 091231**



**Annual OJT Hours 000101 – 091231**



**Monthly OJT Hours 000101 – 091231**



**AVERAGE TOTAL DAYS FOR QUALIFICATION**

Pos	AE	AR	AW	FC	FR	FT	GC	LC
2000	276	224	271	114	52	109	125	210
2001	294	201	229	107	51	64	109	233
2002	294	218	247	96	39	65	126	220
2003	289	252	243	100	53	78	134	194
2004	286	308	254	144	65	98	142	242
2005	264	231	233	101	62	92	119	217
2006	248	215	236	73	47	80	94	156
2007	279	216	239	114	59	88	119	153
2008	279	224	224	112	64	98	107	186
2009	286	147	145	72	36	136	104	209

**NUMBER OF MOS DESIGNATIONS**

	7253	7257 R	7257 T	7252	7253	7254	Tot
2000	20	20	9	9		12	70
2001	13	13	8	10		7	51
2002	20	20	11	13		4	68
2003	23	23	11	9		10	76
2004	2	24	16	9	2	9	62
2005		17	10	12	13	16	68
2006		20	15	12	12	13	72
2007		14	14	13	8	10	59
2008		15	17	11	9	9	61
2009		25	25	12	17	19	98
<b>Tot</b>	<b>98</b>	<b>191</b>	<b>136</b>	<b>110</b>	<b>61</b>	<b>109</b>	<b>685</b>

TRAINING HOURS AND APPROACHES											
	2000	2001	2002	2003	2004	2005	2006	2007	2008	2009	Total
Hours for OJT	10,743.42	9,058.72	9,121.40	10,866.60	12,244.48	13,189.92	13,419.07	10,946.27	9,143.27	11,542.83	110,275.98
Hours for OJF	1,766.10	786.57	1,259.60	1,091.40	736.62	1,929.47	1,396.62	1,256.50	1,143.27	1,571.18	12,937.33
Hours for Skill Checks	1,188.30	901.35	1,001.48	928.00	902.68	1,039.50	891.43	761.45	733.30	852.07	9,199.56
Hours for Simulators	287.95	89.92	232.50	324.02	493.37	897.05	559.15	1,274.25	1,361.28	6,009.95	11,529.44
Hours for Proficiency Classes	2,372.50	754.35	791.02	846.45	1,301.50	813.66	705.37	729.50	1,407.13	592.82	10,314.30
Hours for Team Meetings	208.66	338.00	192.68	180.00	254.28	717.48	720.48	844.20	531.32	409.00	4,396.10
Hours for Nonradar	1,011.00	1,126.24	732.50	1,249.16	833.67	437.48	655.13	571.67	575.08	221.00	7,412.93
Hours for Simulation (Stacks)	1,736.68	1,606.73	1,727.05	1,357.91	1,465.44	1,871.67	1,616.09	1,491.91	765.92	269.06	13,908.46
Hours for Lessons/Tests	4,408.20	2,650.94	3,860.46	3,047.66	2,648.80	2,521.64	2,901.20	3,590.60	2,655.64	2,042.80	30,327.94
Hours for OJTI Course	676.00	264.00	304.50	246.00	245.00	388.00	410.50	316.00	416.00	439.00	3,705.00
Hours for Supervisor Training	103.87	110.73	289.17	92.75	69.17	151.75	92.65	59.82	87.47	61.25	1,118.63
Total Program Hours	24,502.68	17,687.55	19,512.36	20,229.95	21,195.01	23,957.62	23,367.69	21,842.17	18,819.68	24,010.96	215,125.67
Number of Positions Being Trained	256	243	270	279	322	309	293	245	216	292	1,779
Number of Trainees	77	77	87	92	105	106	100	83	93	98	353
Number of Position Qualifications	172	155	175	187	184	206	228	158	175	241	1,881
Number of MOS Designations	70	51	68	76	62	68	72	59	61	97	684
GCA's Conducted by Specialists	3,954	5,417	4,168	2,933	3,008	3,298	3,209	2,948	2,621	2,876	34,432
GCA's for OJT	3,724	3,215	3,129	3,643	3,784	3,060	3,912	2,726	2,133	2,977	32,303
GCA's for Skill Checks	410	481	625	410	502	404	393	238	220	479	4,162
Total GCA's	8,088	9,113	7,922	6,986	7,294	6,762	7,514	5,912	4,974	6,332	70,897
Simulated GCA's	382	297	737	1,356	2,375	6,398	2,702	4,726	3,137	10,136	32,246
OJT Hours by Position											
Approach East (AE/EA)	1,029.82	1,350.50	1,172.25	1,629.47	1,777.43	2,054.03	1,732.85	1,225.78	1,211.90	1,451.22	14,635.25
Approach North (AN)	NA	NA	NA	NA	99.15	59.63	27.63	5.20	0.00	0.00	191.61
Arrival Control/Hand Off (AR/RA)	329.03	563.10	465.15	549.00	800.47	1,451.83	854.20	758.28	532.12	412.88	6,716.06
Approach West/Assistant (AW/WA)	1,770.63	1,631.97	1,492.94	1,940.47	2,002.33	2,276.70	2,400.76	1,996.58	1,533.22	1,831.78	18,877.38
Final Control (FC)	1,303.92	836.12	1,010.33	1,427.28	1,740.43	1,382.17	1,995.65	1,622.02	1,216.83	1,339.32	13,874.07
Radar Flight Data (FR)	1,186.03	1,041.10	1,106.93	1,148.97	1,281.12	1,182.62	1,382.62	1,237.75	1,019.82	1,327.00	11,913.96
Tower Flight Data (FT)	1,447.68	979.28	1,248.25	1,357.57	1,413.28	1,417.12	1,595.00	1,364.15	1,291.83	1,807.35	13,921.51
Ground Control (GC)	1,585.80	1,263.38	1,295.43	1,424.85	1,383.93	1,509.55	1,525.82	1,271.00	1,380.83	1,854.95	14,495.54
Local Control/Assistant (LC/LA)	1,563.72	1,393.26	1,330.11	1,389.00	1,746.34	1,856.27	1,904.53	1,465.50	955.13	1,518.23	15,122.09
Vehicle Operator Course											
Number of Courses Given	63	50	83	87	61	53	58	58	57	63	633
Number of Attendees	436	440	555	618	513	372	753	556	645	692	5,580
Hours of Instruction	31.50	25.00	41.50	43.50	30.50	26.50	29.00	29.00	28.50	31.50	316.50