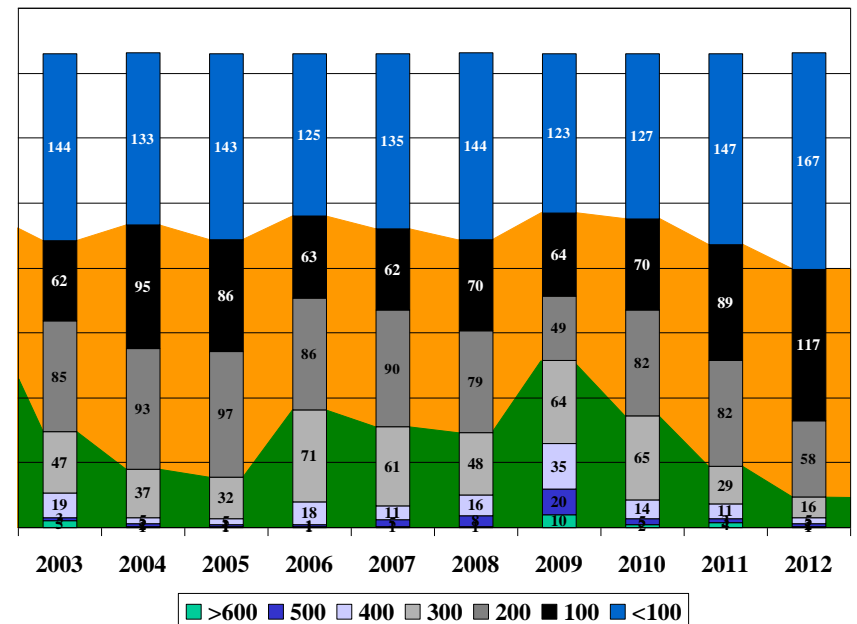


# MCAS CHERRY POINT AIR TRAFFIC CONTROL FACILITY TRAINING

**MCAS CHERRY POINT  
ATC TRAINING PROGRAM  
1 Jan 03 – 31 Dec 12**

**1,438,407 OPERATIONS  
117,795 HOURS OF OJT  
399 TRAINEES  
2,117 POSITION QUALIFICATIONS  
INCLUDING  
152 LOCAL CONTROL  
216 APPROACH CONTROL  
1,175 FD,GC,RD,FC**

10 Jan 13  
8<sup>th</sup> Edition



## 10 YEAR STATISTICAL REPORT 2003-2012

Produced and Compiled by ATC Training Support



**TRAINEE LOSSES**

Name	Join Date	Disposition	Reason
Cooper	26 Mar 03	Admin Discharge	UA, Drugs
Baas	2 Jun 03	Admin Discharge	UA, Drugs
Walsh	9 Jul 03	Medical	Eye Injury
Denton	6 Oct 03	Admin Discharge	UA, Drugs
French	27 Oct 03	Medical	Alcohol
Segersin	8 Dec 03	Revocation	Anxiety
McDougall	24 Feb 04	Revocation	Alcohol
Mead	29 Nov 04	Revocation	Unable to Qualify
Smith	4 Apr 05	Revocation	Unable to Qualify
Razumovsky	17 Jun 05	Revocation	Unable to Qualify
Polito	11 Jul 05	Revocation	Unable to Qualify
Doyle	12 Dec 05	Revocation	Drugs
Moya	12 Dec 05	Revocation	Unable to Qualify
Ivester	11 Jan 06	Revocation	Unable to Qualify
Haas	6 Mar 06	Revocation	Unable to Qualify
Cranfill	31 Jul 06	Revocation	Memory
Quiles	15 May 07	Revocation	Sleep Disorder
Miller	13 Jul 07	Revocation	Unable to Qualify
Toner	20 Aug 07	Revocation	Medical
Thompson	19 Sep 08	Revocation	Unable to Qualify
Peatrowsky	5 Jan 09	Reassignment	Unable to Qualify
Childers	20 Feb 09	Reassignment	Unable to Qualify
Richardson	22 Oct 09	Revocation	Unable to Qualify
Gurule	5 Mar 10	Reassignment	Unable to Qualify
Stoermer	16 Jul 10	Revocation	Medical
Phillips	7 Feb 11	Reassignment	Confidence
Garcia	13 Sep 11	Reassignment	Confidence
Stauffer	25 Oct 11	Admin Discharge	Weight
Mercado	23 Nov 11	Admin Discharge	Weight
Bettis	7 Aug 12	Reassignment	Confidence

**Facility Management**

ATC Facility Officer	Capt S. M. Schmitz
NCO In Charge	MSgt U. D. Bufkin
Training Chief	SSgt R. C. Kelley
Radar Chief	SSgt M. J. Lange
Tower Chief	GySgt C. N. Hearn
Training Support Specialist	Mr. J. G. Hendrickson
Facility Watch Supervisors	Mr. R. S. Clay Mr. J. S. Knipple Mr. D. J. Nowak

**ABBREVIATIONS**

APE	Approach East
APN	Approach North (New Sector)
AR	Arrival Control
APW	Approach West
AS	Associate Positions for Local, Approach & Arrival
FC	Radar Final Control
FD	Tower Flight Data
GC	Ground Control
GCA	Ground Controlled Approach
LC	Local Control
MOS	Military Occupational Specialty
OJF	On-the-Job Familiarization
OJT	On-the-Job Training
OJTI	OJT Instructor
RD	Radar Flight Data
REVO	Revocation from MOS

**TOP OJT INSTRUCTOR HOURS**

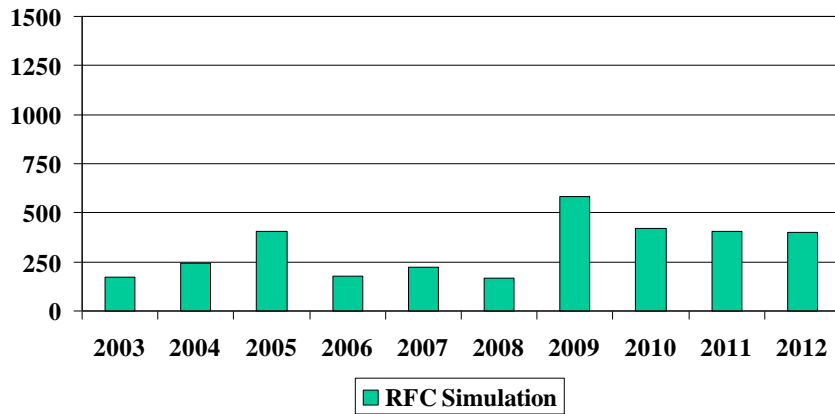
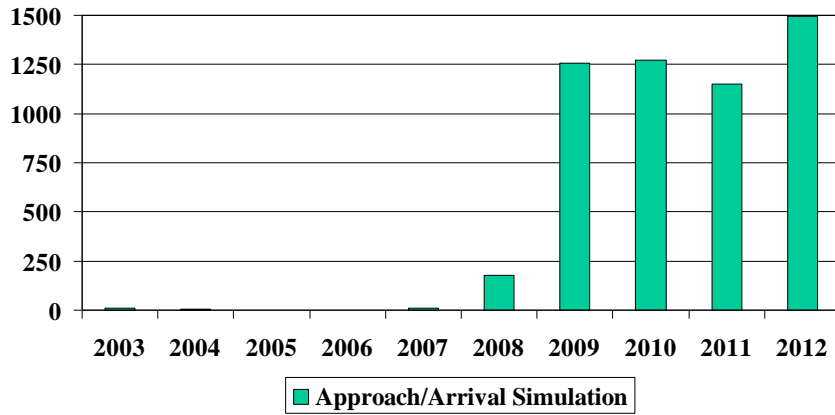
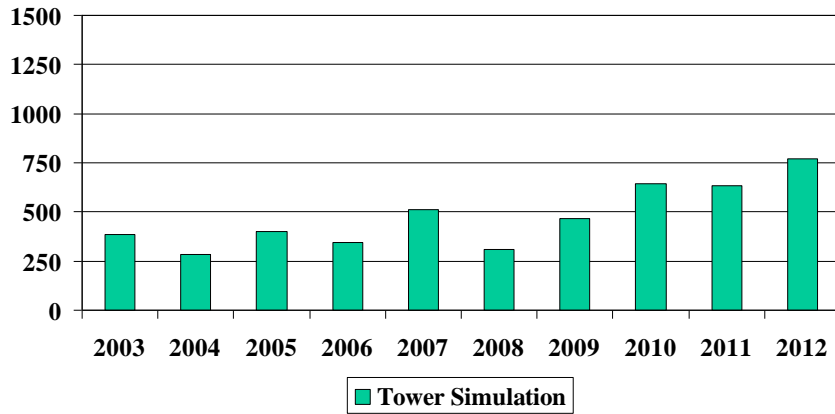
2003	Jason D. Woodin	446.13
2004	Karen L. Geddings	452.55
2005	Karen L. Geddings	607.60
2006	Timothy R. Klinger	561.83
2007	Timothy R. Klinger	414.78
2008	Jason D. Woodin	425.58
2009	Timothy R. Klinger	535.08
2010	Timothy L. Henry	464.18
2011	Jason D. Woodin	762.22
2012	Jordon C. Styrk	528.25

**TRAINER OF THE YEAR**

2003	Terry P. Tolster
2004	Karen L. Geddings
2005	Timothy L. Henry
2006	Timothy R. Klinger
2007	John H. Hough
2008	Jason D. Woodin
2009	Timothy L. Henry
2010	Timothy L. Henry
2011	Jason D. Woodin

**NUMBER OF TRAINEES FROM SCHOOL HOUSE**

Year	MOS	REVO	MEDICAL	ADMIN	TOTAL
2003	23	0	3	3	29
2004	18	1	0	0	19
2005	15	4	2	1	22
2006	23	2	1	0	26
2007	14	1	2	0	17
2008	26	1	0	0	27
2009	27	1	1	0	29
2010	19	1	1	0	21
2011	34	0	0	0	34
2012	23	1	0	0	24
<b>Tot</b>	<b>222</b>	<b>12</b>	<b>10</b>	<b>4</b>	<b>248</b>



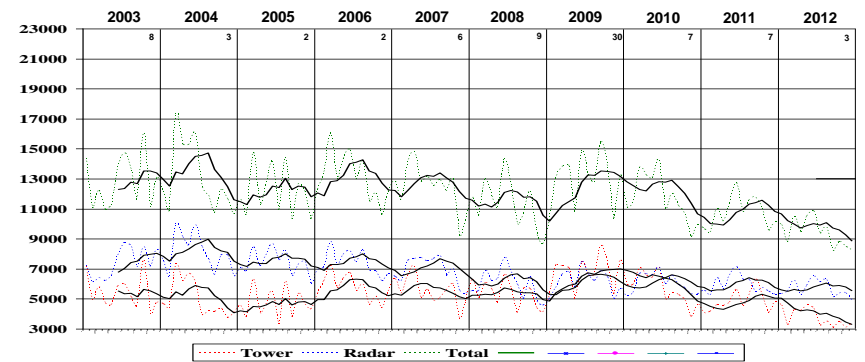
### RADAR APPROACHES

Year	Total	Month Avg	OJT	Quals
2003	6,986	582	3,643	27
2004	7,294	608	3,784	33
2005	6,762	564	3,060	24
2006	7,514	626	3,912	30
2007	5,912	493	2,726	24
2008	4,974	415	2,133	18
2009	6,332	528	2,977	35
2010	5,979	498	3,022	28
2011	6,559	547	3,507	39
2012	6,570	548	3,237	34

### FACILITY OPERATIONS COUNT

Year	TOWER	RADAR	TOTAL	GCA's
2003	65,220	88,829	154,049	6,986
2004	59,827	96,800	156,627	7,294
2005	56,603	89,400	146,003	6,762
2006	68,926	88,640	157,566	7,514
2007	66,187	83,245	149,432	5,912
2008	64,015	71,955	135,970	4,974
2009	81,094	74,402	155,496	6,332
2010	68,196	72,654	140,850	5,979
2011	58,100	71,274	129,374	6,559
2012	45,042	67,997	113,039	6,570

### MCAS CHERRY POINT AIR TRAFFIC ACTIVITY HISTORY



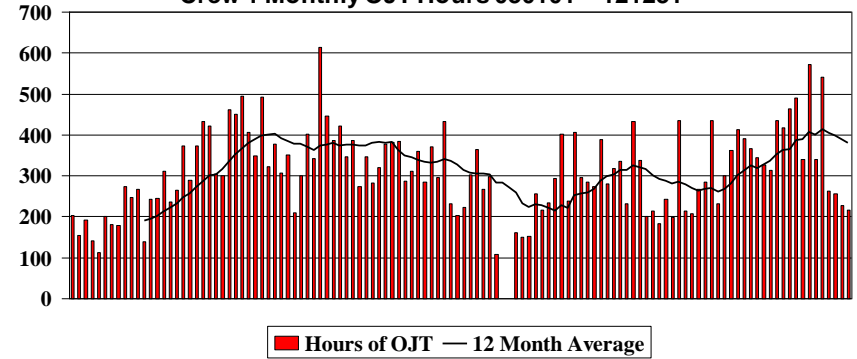
**NUMBER OF QUALIFICATIONS**

Pos	APE	AR	APW	APN	FC	RD	FD	GC	LC	Asst	Tot
2003	5	3	10	0	27	27	30	33	17	35	187
2004	4	3	9	3	33	33	29	26	14	30	184
2005	10	11	14	10	24	27	24	23	14	49	206
2006	9	7	15	9	30	36	30	29	16	47	228
2007	4	2	8	4	24	23	26	23	15	29	158
2008	7	9	11	7	18	26	24	22	12	39	175
2009	7	7	18	7	35	39	34	32	15	47	241
2010	11	10	19	11	28	32	21	30	19	59	240
2011	8	7	18	8	39	42	35	30	13	46	246
2012	9	10	20	9	34	33	33	31	17	56	252
<b>Tot</b>	<b>74</b>	<b>69</b>	<b>142</b>	<b>68</b>	<b>292</b>	<b>318</b>	<b>286</b>	<b>279</b>	<b>152</b>	<b>437</b>	<b>2,117</b>

**AVERAGE OJT HOURS FOR QUALIFICATION**

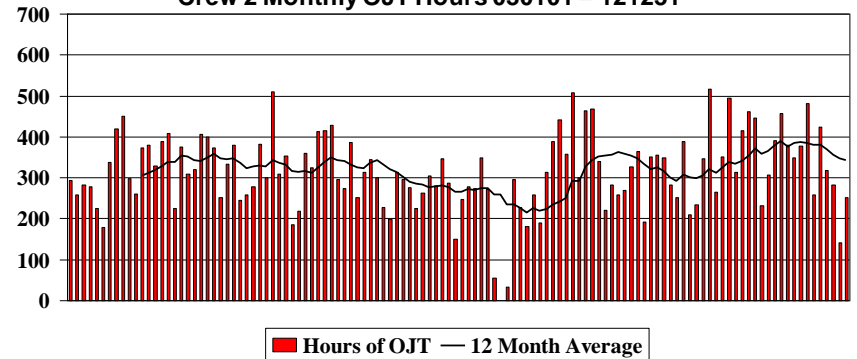
Pos	APE	AR	APW	FC	RD	FD	GC	LC
2003	200.0	89.8	174.5	152	52.5	51.4	56.5	108.5
2004	208.3	103.2	176.2	157	52.0	58.8	67.6	123.5
2005	247.5	128.1	251.0	159	58.9	55.4	73.2	139.5
2006	258.7	131.0	203.9	142	27.4	61.3	72.5	118.8
2007	239.9	130.6	193.8	179	49.0	77.2	60.2	86.1
2008	239.9	105.0	169.7	133	52.3	74.2	67.2	106.4
2009	202.0	61.52	104.8	88	39.0	87.6	55.8	116.8
2010	189.7	48.9	101.3	135	51.1	72.0	67.4	85.8
2011	176.9	52.3	136.2	120	54.8	74.4	64.2	134.3
2012	161.9	64.5	145.3	115	68.2	79.6	68.7	124.8

**Crew 1 Monthly OJT Hours 030101 – 121231**



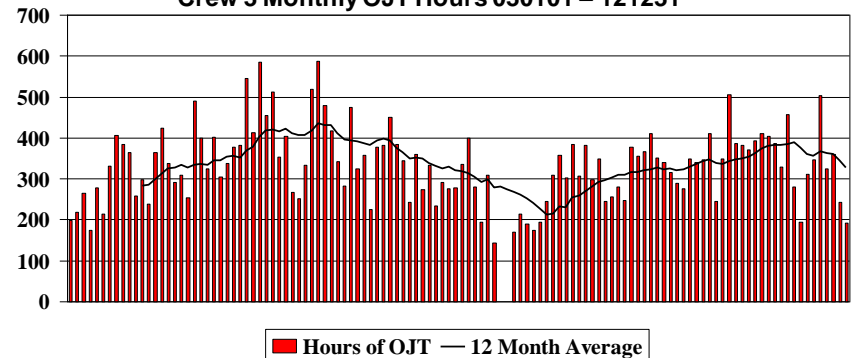
Hours of OJT — 12 Month Average

**Crew 2 Monthly OJT Hours 030101 – 121231**

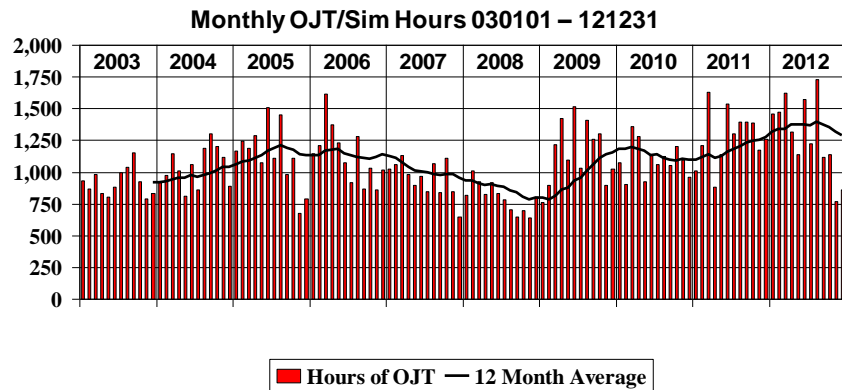
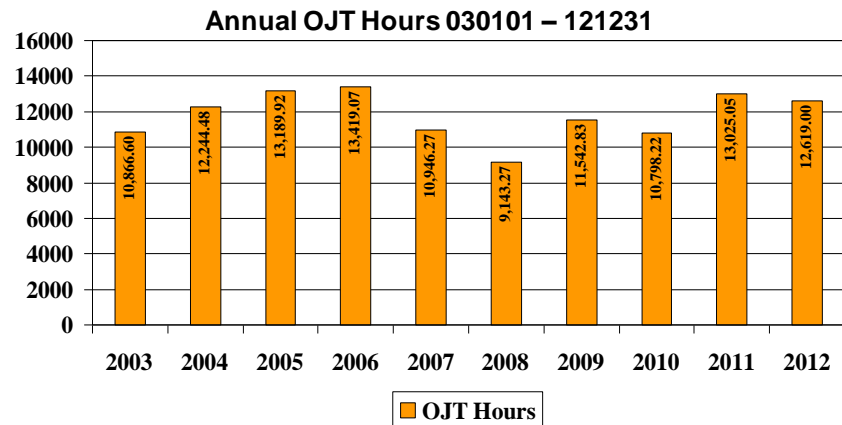
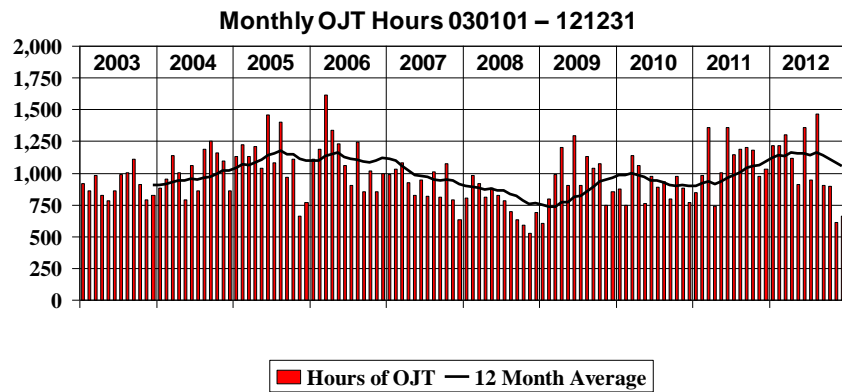


Hours of OJT — 12 Month Average

**Crew 3 Monthly OJT Hours 030101 – 121231**



Hours of OJT — 12 Month Average



### AVERAGE TOTAL DAYS FOR QUALIFICATION

Pos	APE	AR	APW	FC	RD	FD	GC	LC
2003	289	252	243	100	53	78	134	194
2004	286	308	254	144	65	98	142	242
2005	264	231	233	101	62	92	119	217
2006	248	215	236	73	47	80	94	156
2007	279	216	239	114	59	88	119	153
2008	279	224	224	112	64	98	107	186
2009	286	147	145	72	36	136	104	209
2010	275	190	142	95	45	116	144	163
2011	261	184	175	73	46	87	108	178
2012	231	197	200	77	47	99	83	160

### NUMBER OF MOS DESIGNATIONS

	7253	7257 R	7257 T	7252	7253	7254	Tot
2003	23	23	11	9		10	76
2004	2	24	16	9	2	9	62
2005		17	12	12	14	16	71
2006		22	17	12	15	14	80
2007		16	15	13	9	10	63
2008		15	17	11	11	10	64
2009		25	26	12	18	19	100
2010		24	20	15	15	19	93
2011		29	18	11	14	14	86
2012		26	23	13	20	21	103
<b>Tot</b>	<b>25</b>	<b>221</b>	<b>175</b>	<b>117</b>	<b>118</b>	<b>142</b>	<b>798</b>

TRAINING HOURS AND APPROACHES											
	2003	2004	2005	2006	2007	2008	2009	2010	2011	2012	Total
Hours for OJT	10,866.60	12,244.48	13,189.92	13,419.07	10,946.27	9,143.27	11,542.83	10,798.22	13,025.05	12,619.00	117,794.71
Hours for OJF	1,091.40	736.62	1,929.47	1,396.62	1,256.13	1,145.65	1,571.18	1,244.30	1,146.10	2,188.22	13,705.69
Hours for Skill Checks	928.00	902.68	1,039.50	891.43	761.45	733.30	852.07	998.13	1,256.92	1,115.57	9,479.05
Hours for Simulators	750.85	806.30	1,302.72	892.03	1,576.08	1,582.83	6,278.10	6,338.03	6,345.78	7,947.93	33,820.65
Hours for Proficiency Classes	846.45	1,301.50	813.66	705.37	729.50	1,407.13	592.82	865.91	383.67	1,602.15	9,248.16
Hours for Team Meetings	180.00	254.28	717.48	720.48	844.20	531.32	409.00	126.32	264.00	410.00	4,457.08
Hours for Nonradar	1,249.16	833.67	437.48	655.13	571.67	575.08	221.00	95.30	17.00	0.00	5,387.99
Hours for Lessons/Tests	3,047.66	2,648.80	2,521.64	2,901.20	3,590.60	2,655.64	2,042.80	1,610.34	2,173.36	2,471.14	25,663.18
Hours for OJTI Course	246.00	245.00	388.00	410.50	316.00	416.00	439.00	266.00	503.00	231.00	3,460.50
Hours for Supervisor Training	92.75	69.17	151.75	92.65	59.82	87.47	61.25	32.82	31.67	242.08	921.43
Total Program Hours	19,298.87	20,042.50	22,491.62	22,084.48	20,651.72	18,277.69	24,010.05	22,375.37	25,146.55	28,827.09	223,205.94
Number of Positions Being Trained	279	322	309	293	245	216	292	271	279	294	1,950
Number of Trainees	92	105	106	100	83	93	98	98	98	105	399
Number of Position Qualifications	187	184	206	228	158	175	241	240	246	252	2,117
Number of MOS Designations	76	62	71	80	63	64	100	93	86	103	798
GCA's Conducted by Specialists	2,933	3,008	3,299	3,209	2,948	2,621	2,876	2,714	2,532	3,014	30,309
GCA's for OJT	3,643	3,784	3,060	3,912	2,726	2,133	2,977	3,022	3,507	3,237	31,893
GCA's for Skill Checks	410	502	404	393	238	220	479	243	520	319	4,034
Total GCA's	6,986	7,294	6,762	7,514	5,912	4,974	6,332	5,979	6,559	6,570	66,234
Simulated GCA's	1,366	2,375	6,398	2,702	4,726	3,137	10,136	6,812	6,612	8,531	52,795
OJT Hours by Position											
Approach East (APE/ASE)	1,629.47	1,777.43	2,054.03	1,732.85	1,225.78	1,211.90	1,451.22	1,530.42	1,183.20	1,490.93	15,287.23
Approach North (APN)	NA	99.15	59.63	27.63	5.20	0.00	0.00	0.00	0.00	0.00	191.61
Arrival Control (AR/ASA)	549.00	800.47	1,451.83	854.20	758.28	532.12	412.88	395.22	166.07	405.85	6,325.92
Approach West (APW/ASW)	1,940.47	2,002.33	2,276.70	2,400.76	1,996.58	1,533.22	1,831.78	1,830.23	2,179.30	2,007.92	19,999.29
Final Control (FC)	1,427.28	1,740.43	1,382.17	1,995.65	1,622.02	1,216.83	1,339.32	1,212.95	1,591.88	1,122.12	14,650.65
Radar Flight Data (RD)	1,148.97	1,281.12	1,182.62	1,382.62	1,237.75	1,019.82	1,327.00	1,246.43	1,792.58	1,643.58	13,262.49
Tower Flight Data (FD)	1,357.57	1,413.28	1,417.12	1,595.00	1,364.15	1,291.83	1,807.35	1,347.67	2,024.18	1,910.92	15,529.07
Ground Control (GC)	1,424.85	1,383.93	1,509.55	1,525.82	1,271.00	1,380.83	1,854.95	1,512.18	1,876.10	1,907.67	15,646.88
Local Control (LC/ASL)	1,389.00	1,746.34	1,856.27	1,904.53	1,465.50	955.13	1,518.23	1,723.12	2,211.73	2,130.02	16,899.87
Vehicle Operator Course											
Number of Courses Given	87	61	53	58	58	57	63	59	60	56	612
Number of Attendees	618	513	372	753	556	645	692	590	658	592	5,989
Hours of Instruction	43.50	30.50	26.50	29.00	29.00	28.50	31.50	29.50	36.50	56.00	340.50