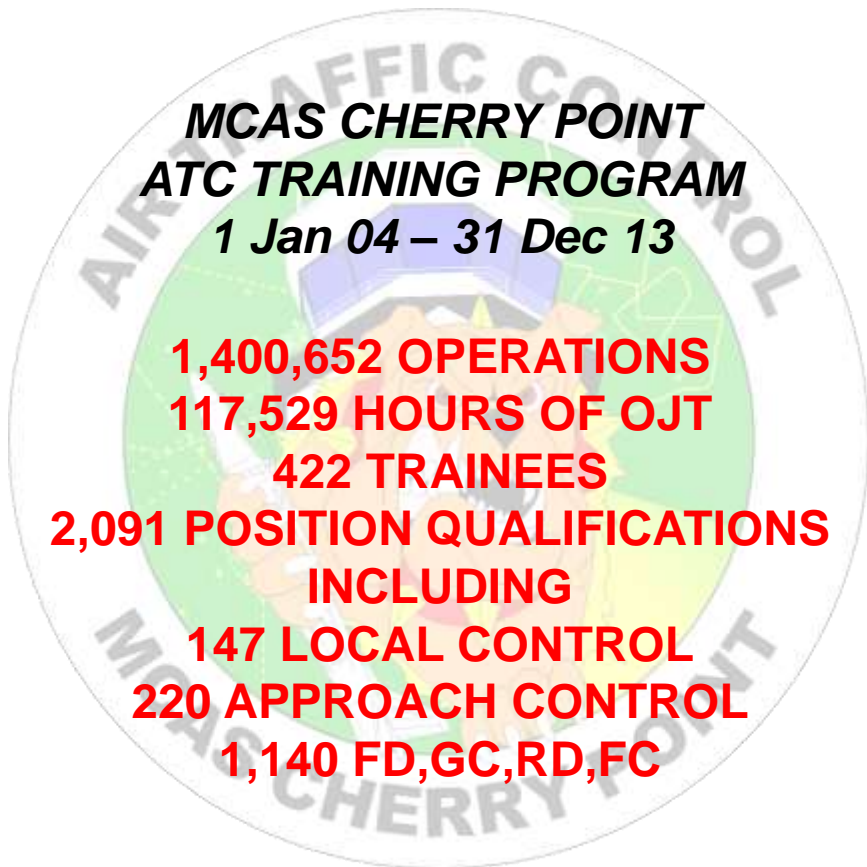


MCAS CHERRY POINT AIR TRAFFIC CONTROL FACILITY TRAINING

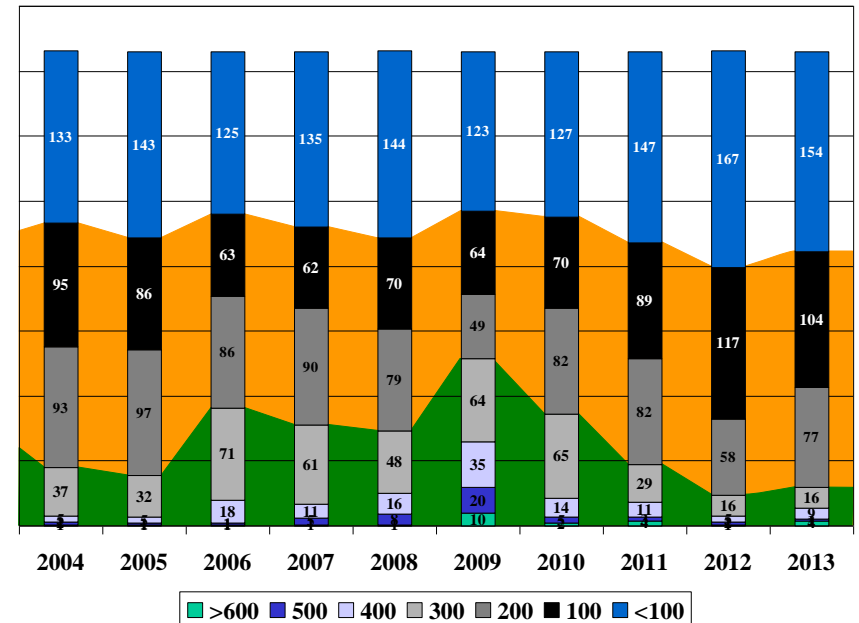


**MCAS CHERRY POINT
ATC TRAINING PROGRAM
1 Jan 04 – 31 Dec 13**

**1,400,652 OPERATIONS
117,529 HOURS OF OJT
422 TRAINEES
2,091 POSITION QUALIFICATIONS
INCLUDING**

**147 LOCAL CONTROL
220 APPROACH CONTROL
1,140 FD,GC,RD,FC**

8 Jan 14
9th Edition



10 YEAR STATISTICAL REPORT 2004-2013

Produced and Compiled by ATC Training Support

TRAINEE LOSSES

Name	Join Date	Disposition	Reason
McDougall	24 Feb 04	Revocation	Alcohol
Mead	29 Nov 04	Revocation	Unable to Qualify
Smith	4 Apr 05	Revocation	Unable to Qualify
Razumovsky	17 Jun 05	Revocation	Unable to Qualify
Polito	11 Jul 05	Revocation	Unable to Qualify
Doyle	12 Dec 05	Revocation	Drugs
Moya	12 Dec 05	Revocation	Unable to Qualify
Ivester	11 Jan 06	Revocation	Unable to Qualify
Haas	6 Mar 06	Revocation	Unable to Qualify
Cranfill	31 Jul 06	Revocation	Memory
Quiles	15 May 07	Revocation	Sleep Disorder
Miller	13 Jul 07	Revocation	Unable to Qualify
Toner	20 Aug 07	Revocation	Medical
Thompson	19 Sep 08	Revocation	Unable to Qualify
Peatrowsky	5 Jan 09	Reassignment	Unable to Qualify
Childers	20 Feb 09	Reassignment	Unable to Qualify
Richardson	22 Oct 09	Revocation	Unable to Qualify
Gurule	5 Mar 10	Reassignment	Unable to Qualify
Stoermer	16 Jul 10	Revocation	Medical
Phillips	7 Feb 11	Reassignment	Confidence
Garcia	13 Sep 11	Reassignment	Confidence
Stauffer	25 Oct 11	Admin Discharge	Weight
Mercado	23 Nov 11	Admin Discharge	Weight
Harlan	15 Feb 12	Admin Discharge	Confidence
Bettis	7 Aug 12	Reassignment	Confidence
Snow	26 Nov 12	Revocation	Confidence

Facility Management

ATC Facility Officer	Capt S. M. Schmitz
NCO In Charge	MSgt M. K. Crawford
Training Chief	GySgt J. A. Felix
Radar Chief	SSgt W. N. Allen
Tower Chief	SSgt B. D. Lewis
Training Support Specialist	Mr. J. G. Hendrickson
Facility Watch Supervisors	Mr. R. S. Clay Mr. J. S. Knipple Mr. D. J. Nowak

ABBREVIATIONS

APE	Approach East
APN	Approach North (New Sector)
AR	Arrival Control
APW	Approach West
CCL	Associate Local Control
FC	Radar Final Control
FD	Tower Flight Data
GC	Ground Control
GCA	Ground Controlled Approach
LC	Local Control
MOS	Military Occupational Specialty
OJF	On-the-Job Familiarization
OJT	On-the-Job Training
OJTI	OJT Instructor
RAA	Radar Associate Arrival
RAE	Radar Associate East
RAW	Radar Associate West
RD	Radar Flight Data
REVO	Revocation from MOS

TOP OJT INSTRUCTOR HOURS

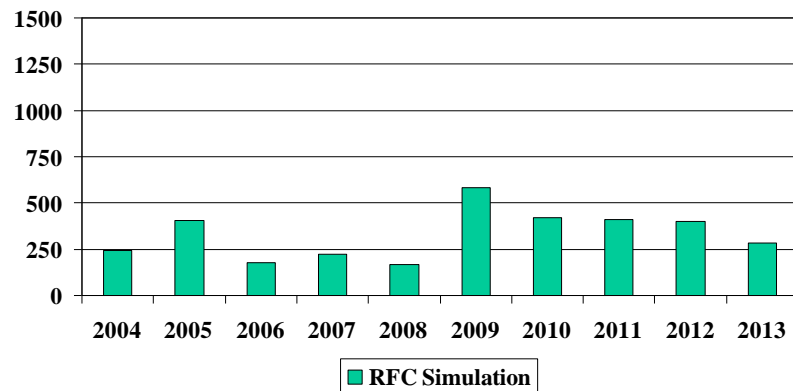
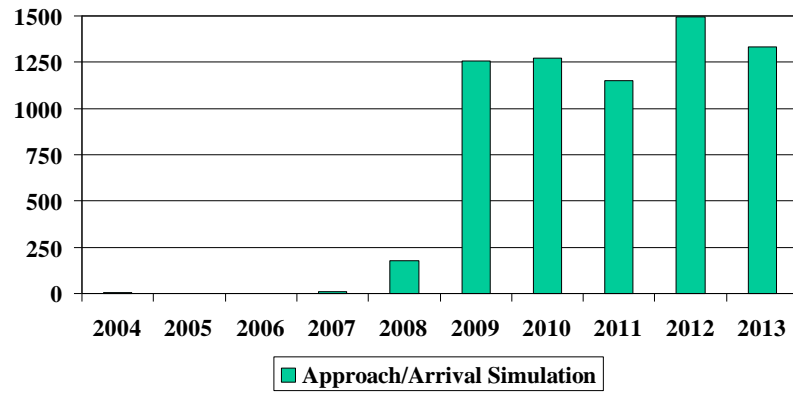
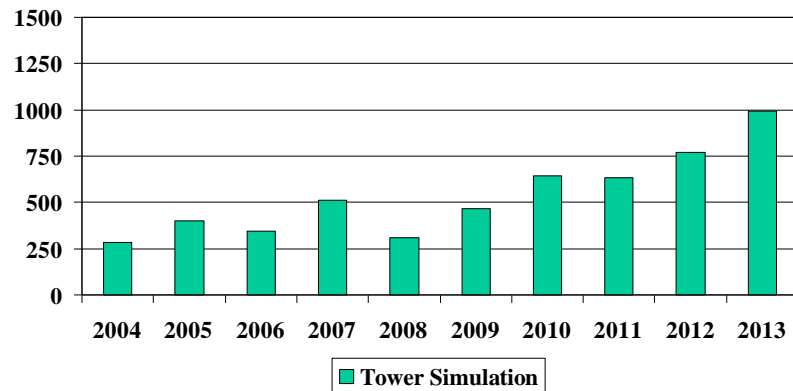
2004	Karen L. Geddings	452.55
2005	Karen L. Geddings	607.60
2006	Timothy R. Klinger	561.83
2007	Timothy R. Klinger	414.78
2008	Jason D. Woodin	425.58
2009	Timothy R. Klinger	535.08
2010	Timothy L. Henry	464.18
2011	Jason D. Woodin	762.22
2012	Jordon C. Styrk	528.25
2013	Jesse A. Ramsey	378.90

TRAINER OF THE YEAR

2004	Karen L. Geddings
2005	Timothy L. Henry
2006	Timothy R. Klinger
2007	John H. Hough
2008	Jason D. Woodin
2009	Timothy L. Henry
2010	Timothy L. Henry
2011	Jason D. Woodin
2012	Timothy L. Henry

NUMBER OF TRAINEES FROM SCHOOL HOUSE

Year	MOS	REVO	MEDICAL	ADMIN	TOTAL
2004	18	1	0	0	19
2005	15	4	2	1	22
2006	21	2	1	0	24
2007	14	1	2	0	17
2008	26	1	0	0	27
2009	27	1	1	0	29
2010	19	1	1	0	21
2011	30	2	0	2	34
2012	21	3	0	0	24
2013	33	0	0	0	33
Tot	224	16	7	3	250



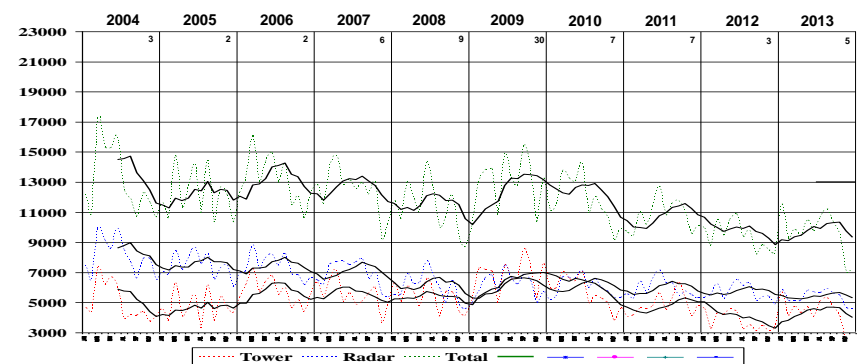
RADAR APPROACHES

Year	Total	Month Avg	OJT	Quals
2004	7,294	608	3,784	33
2005	6,762	564	3,060	24
2006	7,514	626	3,912	30
2007	5,912	493	2,726	24
2008	4,974	415	2,133	18
2009	6,332	528	2,977	35
2010	5,979	498	3,022	28
2011	6,559	547	3,507	39
2012	6,570	548	3,237	34
2013	6,577	548	2,300	16

FACILITY OPERATIONS COUNT

Year	TOWER	RADAR	TOTAL	GCA's
2004	59,827	96,800	156,627	7,294
2005	56,603	89,400	146,003	6,762
2006	68,926	88,640	157,566	7,514
2007	66,187	83,245	149,432	5,912
2008	64,015	71,955	135,970	4,974
2009	81,094	74,402	155,496	6,332
2010	68,196	72,654	140,850	5,979
2011	58,100	71,274	129,374	6,559
2012	45,042	67,997	113,039	6,570
2013	51,759	64,535	116,294	6,577

MCAS CHERRY POINT AIR TRAFFIC ACTIVITY HISTORY



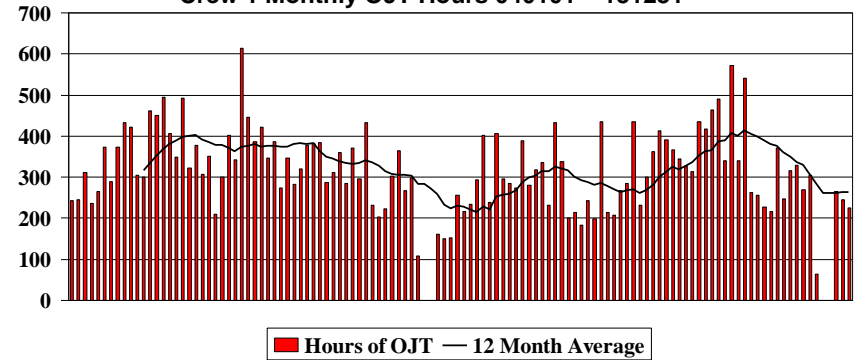
NUMBER OF QUALIFICATIONS

Pos	APE	AR	APW	APN	FC	RD	FD	GC	LC	Asst	Tot
2004	4	3	9	3	33	33	29	26	14	30	187
2005	10	11	14	10	24	27	24	23	14	49	184
2006	9	7	15	9	30	36	30	29	16	47	206
2007	4	2	8	4	24	23	26	23	15	29	228
2008	7	9	11	7	18	26	24	22	12	39	158
2009	7	7	18	7	35	39	34	32	15	47	175
2010	11	10	19	11	28	32	21	30	19	59	241
2011	8	7	18	8	39	42	35	30	13	46	240
2012	9	10	20	9	34	33	33	31	17	56	246
2013	5	6	14	5	16	20	23	23	12	37	161
Tot	74	72	146	73	281	311	279	269	147	439	2,091

AVERAGE OJT HOURS FOR QUALIFICATION

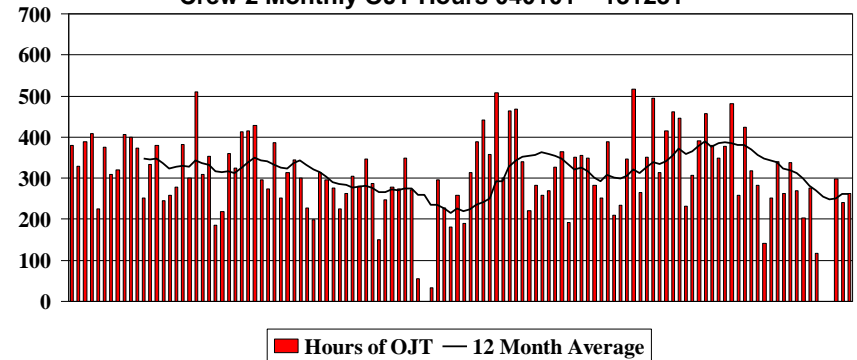
Pos	APE	AR	APW	FC	RD	FD	GC	LC
2004	208.3	103.2	176.2	157	52.0	58.8	67.6	123.5
2005	247.5	128.1	251.0	159	58.9	55.4	73.2	139.5
2006	258.7	131.0	203.9	142	27.4	61.3	72.5	118.8
2007	239.9	130.6	193.8	179	49.0	77.2	60.2	86.1
2008	239.9	105.0	169.7	133	52.3	74.2	67.2	106.4
2009	202.0	61.52	104.8	88	39.0	87.6	55.8	116.8
2010	189.7	48.9	101.3	135	51.1	72.0	67.4	85.8
2011	176.9	52.3	136.2	120	54.8	74.4	64.2	134.3
2012	161.9	64.5	145.3	115	68.2	79.6	68.7	124.8
2013	168.5	78.8	156.3	132	77.0	69.3	82.3	117.7

Crew 1 Monthly OJT Hours 040101 – 131231



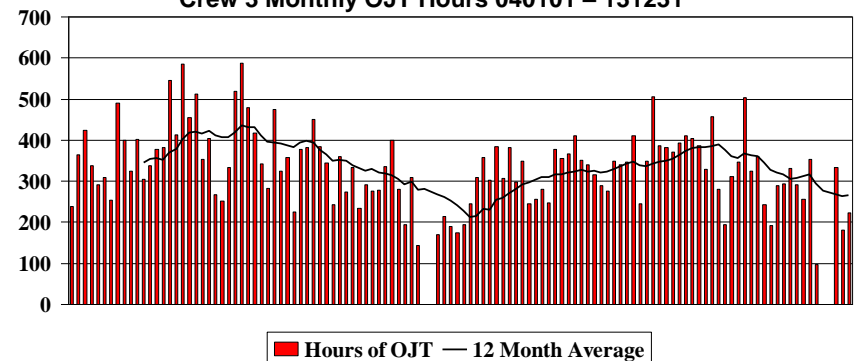
Hours of OJT — 12 Month Average

Crew 2 Monthly OJT Hours 040101 – 131231

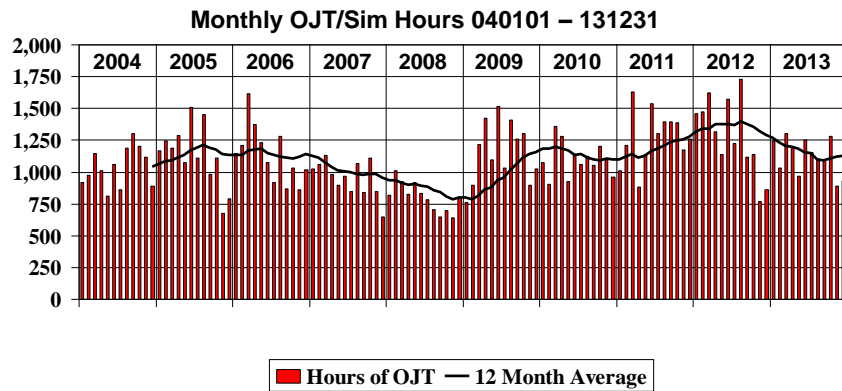
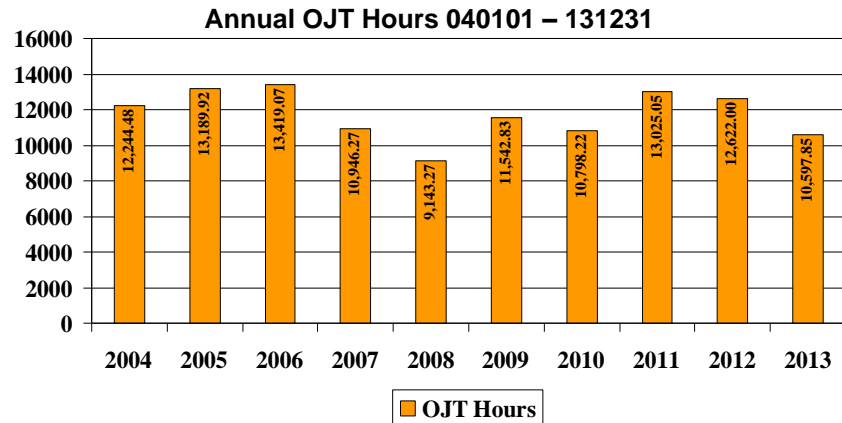
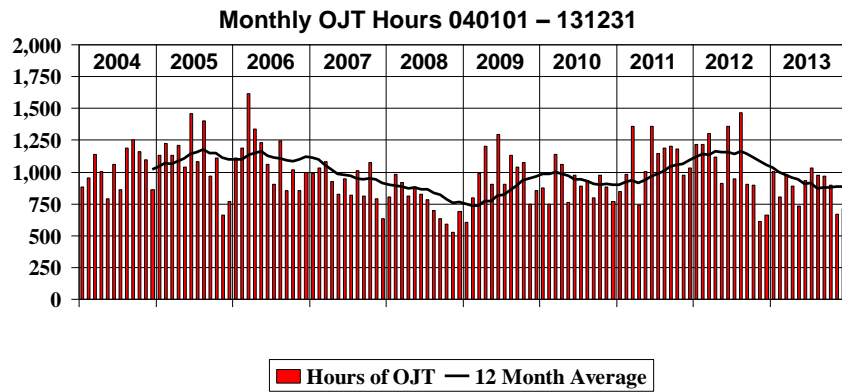


Hours of OJT — 12 Month Average

Crew 3 Monthly OJT Hours 040101 – 131231



Hours of OJT — 12 Month Average



AVERAGE TOTAL DAYS FOR QUALIFICATION

Pos	APE	AR	APW	FC	RD	FD	GC	LC
2004	286	308	254	144	65	98	142	242
2005	264	231	233	101	62	92	119	217
2006	248	215	236	73	47	80	94	156
2007	279	216	239	114	59	88	119	153
2008	279	224	224	112	64	98	107	186
2009	286	147	145	72	36	136	104	209
2010	275	190	142	95	45	116	144	163
2011	261	184	175	73	46	87	108	178
2012	231	197	200	77	47	99	83	160
2013	240	195	215	78	68	78	86	169

NUMBER OF MOS DESIGNATIONS

	7253	7257 R	7257 T	7252	7253	7254	Tot
2004	2	24	16	9	2	9	62
2005		17	12	12	14	16	71
2006		22	17	12	15	14	80
2007		16	15	13	9	10	63
2008		15	17	11	11	10	64
2009		25	26	12	18	19	100
2010		24	20	15	15	19	93
2011		29	18	11	14	14	86
2012		26	23	13	20	21	103
2013		13	15	9	15	14	66
Tot	2	211	179	117	133	146	788

TRAINING HOURS AND APPROACHES											
	2004	2005	2006	2007	2008	2009	2010	2011	2012	2013	Total
Hours for OJT	12,244.48	13,189.92	13,419.07	10,946.27	9,143.27	11,542.83	10,798.22	13,025.05	12,619.00	10,597.85	117,525.96
Hours for OJF	736.62	1,929.47	1,396.62	1,256.13	1,145.65	1,571.18	1,244.30	1,146.10	2,188.22	1,838.27	14,452.56
Hours for Skill Checks	902.68	1,039.50	891.43	761.45	733.30	852.07	998.13	1,256.92	1,115.57	661.77	9,212.82
Hours for Simulators	806.30	1,302.72	892.03	1,576.08	1,582.83	6,278.10	6,338.03	6,345.78	7,947.93	7,852.35	40,922.15
Hours for Proficiency Classes	1,301.50	813.66	705.37	729.50	1,407.13	592.82	865.91	383.67	1,602.15	694.75	9,096.46
Hours for Team Meetings	254.28	717.48	720.48	844.20	531.32	409.00	126.32	264.00	410.00	273.32	4,550.40
Hours for Nonradar	833.67	437.48	655.13	571.67	575.08	221.00	95.30	17.00	0.00	0.00	3,406.33
Hours for Lessons/Tests	2,648.80	2,521.64	2,901.20	3,590.60	2,655.64	2,042.80	1,610.34	2,173.36	2,471.14	1,063.74	23,679.26
Hours for OJTI Course	245.00	388.00	410.50	316.00	416.00	439.00	266.00	503.00	231.00	505.00	3,719.50
Hours for Supervisor Training	69.17	151.75	92.65	59.82	87.47	61.25	32.82	31.67	239.08	202.87	1,028.55
Total Program Hours	20,042.50	22,491.62	22,084.48	20,651.72	18,277.69	24,010.05	22,375.37	25,146.55	28,827.09	23,689.92	227,596.99
Number of Positions Being Trained											
Number of Positions Being Trained	322	309	293	245	216	292	271	279	294	204	1,959
Number of Trainees	105	106	100	83	93	98	98	98	105	98	422
Number of Position Qualifications	184	206	228	158	175	241	240	246	252	161	2,091
Number of MOS Designations	62	71	80	63	64	100	93	86	103	66	788
GCA's Conducted by Specialists											
GCA's Conducted by Specialists	3,008	3,299	3,209	2,948	2,621	2,876	2,714	2,532	3,014	4,133	30,354
GCA's for OJT	3,784	3,060	3,912	2,726	2,133	2,977	3,022	3,507	3,237	2,300	30,658
GCA's for Skill Checks	502	404	393	238	220	479	243	520	319	144	3,462
Total GCA's	7,294	6,762	7,514	5,912	4,974	6,332	5,979	6,559	6,570	6,577	64,473
Simulated GCA's	2,375	6,398	2,702	4,726	3,137	10,136	6,812	6,642	8,601	7,828	59,357
OJT Hours by Position											
Approach East (APE/ASE)	1,777.43	2,054.03	1,732.85	1,225.78	1,211.90	1,451.22	1,530.42	1,183.20	1,490.93	1,239.93	14,897.69
Approach North (APN)	99.15	59.63	27.63	5.20	0.00	0.00	0.00	0.00	0.00	0.00	191.61
Arrival Control (AR/ASA)	800.47	1,451.83	854.20	758.28	532.12	412.88	395.22	166.07	405.85	528.20	6,305.12
Approach West (APW/ASW)	2,002.33	2,276.70	2,400.76	1,996.58	1,533.22	1,831.78	1,830.23	2,179.30	2,007.92	2,092.85	20,151.67
Final Control (FC)	1,740.43	1,382.17	1,995.65	1,622.02	1,216.83	1,339.32	1,212.95	1,591.88	1,122.12	785.10	14,008.47
Radar Flight Data (RD)	1,281.12	1,182.62	1,382.62	1,237.75	1,019.82	1,327.00	1,246.43	1,792.58	1,643.58	1,386.37	13,499.89
Tower Flight Data (FD)	1,413.28	1,417.12	1,595.00	1,364.15	1,291.83	1,807.35	1,347.67	2,024.18	1,910.92	1,478.65	15,650.15
Ground Control (GC)	1,383.93	1,509.55	1,525.82	1,271.00	1,380.83	1,854.95	1,512.18	1,876.10	1,907.67	1,357.87	15,579.90
Local Control (LC/ASL)	1,746.34	1,856.27	1,904.53	1,465.50	955.13	1,518.23	1,723.12	2,211.73	2,130.02	1,728.88	17,239.75
Vehicle Operator Course											
Number of Courses Given	61	53	58	58	57	63	59	60	56	63	588
Number of Attendees	513	372	753	556	645	692	590	658	592	575	5,946
Hours of Instruction	30.50	26.50	29.00	29.00	28.50	31.50	29.50	36.50	56.00	63.00	360.00